



Overview

LEG

Leg Length	105 ft
Leg Diameter (Od)	36 in
Leg Tower Height	11 ft

HULL

Length (Overall)	86.5 ft
Length (Barge Only)	74 ft
Beam (Overall)	57 ft
Beam (Barge Only)	32 ft
Hull Depth	7 ft

PAD

Length	24 ft
Width	12 ft
Depth	1.5 ft
Bearing Load	3,000 lbs/ft ²
Design	2-Way Slope

CRANE

	Port	Starboard
Load Rating	15 ton	30 ton
Make	OECO	EBI
Model	99C02	C60A-70
Boom Type	Telescopic	Fixed
Boom Length	70 ft	70 ft
Crane Inst. Type	Deck Mount	Deck Mount

PROPULSION

Mains - Make	GM
Mains - Model	12V71
Horsepower	800 hp
Bow Thruster Equipped	No
Clutch Make/Reduction	Twin Disc 2:1
Consumption/Engine-Full	19.4 gph
Consumption/Engine-Half	9.7 gph

GENERATORS

Generator Engine Make	GM
Generator Engine Model	3-71
Generator Output	40 kw
Consumption/Gen	5.0 gph

DECK

Total Deck Area	1,751 ft ²
Clear Deck Area	1,181 ft ²
Additional Clear Area	N/A
Maximum Deck Load	140,000

CAPACITIES

Diesel Fuel	2,178 usg
Lube	115 usg
Hydraulic Oil	976 usg
Potable Water	1,856 usg
Watermaker Equipped	No

ELECTRONIC AIDS & COMMUNICATION

Compass	Fully Equipped
Gps/Dgps	Fully Equipped
Radar(s)	Fully Equipped
Fathometer	Fully Equipped
Loudhailer	Fully Equipped
Satellite Phone	Fully Equipped
VHF Radio	Fully Equipped
Single Sideband Radio	Fully Equipped
EPIRB	Fully Equipped
GMDSS	No

PERSONNEL ACCOMMODATIONS

Total Accommodations	14
VIP Accommodations	2
Galley & Dining	Fully Equipped
TV Lounge	Fully Equipped
Laundry Facility	Fully Equipped
Air Condition / Heater	Std Central Units

PERFORMANCE

Estimated Speed	6 knots
Max Sep – Pad to Deck	93 ft
Max Working Water Depth	78 ft
Min Working Water Depth	6 ft

DOCUMENTATION

Class	None
Flag/ Port of Registry	USA / New Orleans, LA
USCG	Inspected
SOLAS	No
Official Number	5966380
IMO	7832012
Call Sign	WDH5100
Year Built	1978
Builder	Sun Contractors
Registered Tonnage	94
International Tonnage	None



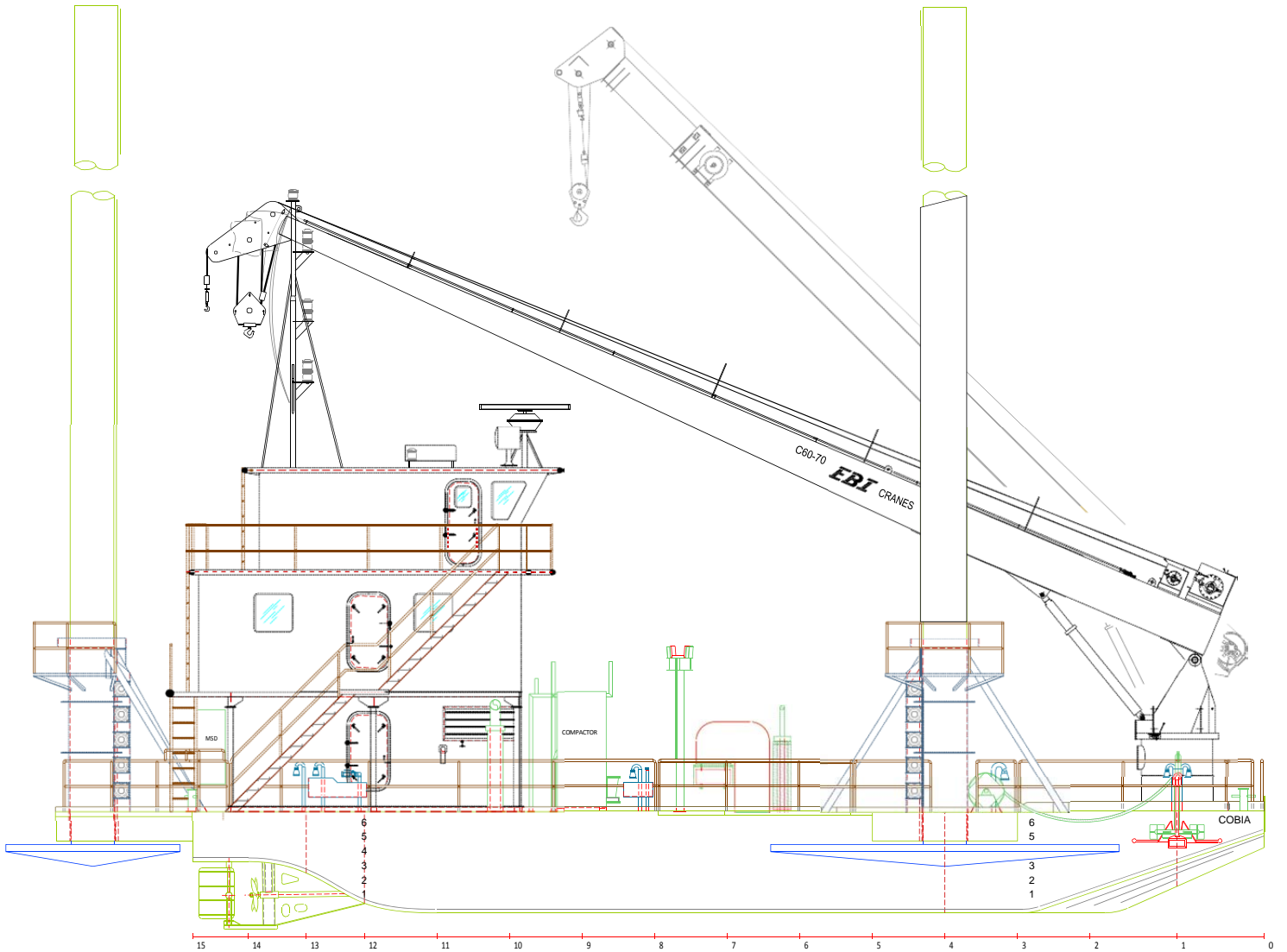
OECO 15 TON CRANE*		
99C02		
70 FT TELESCOPIC BOOM		
MAXIMUM SAFE WORKING LOAD		
50 FT BOOM RETRACTED		
BOOM RADIUS (ft)	ONBOARD LOAD (lbs.)	OFFBOARD LOAD (lbs.)
7	16,000	10,667
13	16,000	10,667
17	15,800	10,533
25	10,440	6,960
32	7,346	4,897
38	5,604	3,736
43	4,555	3,037
47	3,925	2,617
49	3,586	2,391
50	3,478	2,319
70 FT BOOM EXTENDED		
BOOM RADIUS (ft)	ONBOARD LOAD (lbs.)	OFFBOARD LOAD (lbs.)
10	16,000	10,667
18	12,000	8,000
24	9,800	6,533
35	6,828	4,552
45	4,619	3,079
54	3,374	2,249
61	2,625	1,750
66	2,484	1,656
69	2,342	1,561
70	2,200	1,467
*CURRENT CONFIGURATION IS FOR 8 TONS		



EBI 30 TON CRANE		
C60-70		
70 FT FIXED BOOM		
MAXIMUM SAFE WORKING LOAD		
BOOM RADIUS (ft)	ONBOARD LOAD (lbs.)	OFFBOARD LOAD (lbs.)
10	58,590	40,000
15	40,000	26,600
20	30,000	20,000
25	23,000	15,300
30	20,000	13,300
35	18,000	12,000
40	15,000	10,000
45	13,300	8,886
50	11,400	7,600
55	10,000	6,667
60	9,000	6,000
65	8,000	5,330
70	7,000	4,337
FAST LINES RATED FOR 4,667 LBS AT ALL RADII		



Outboard Profile

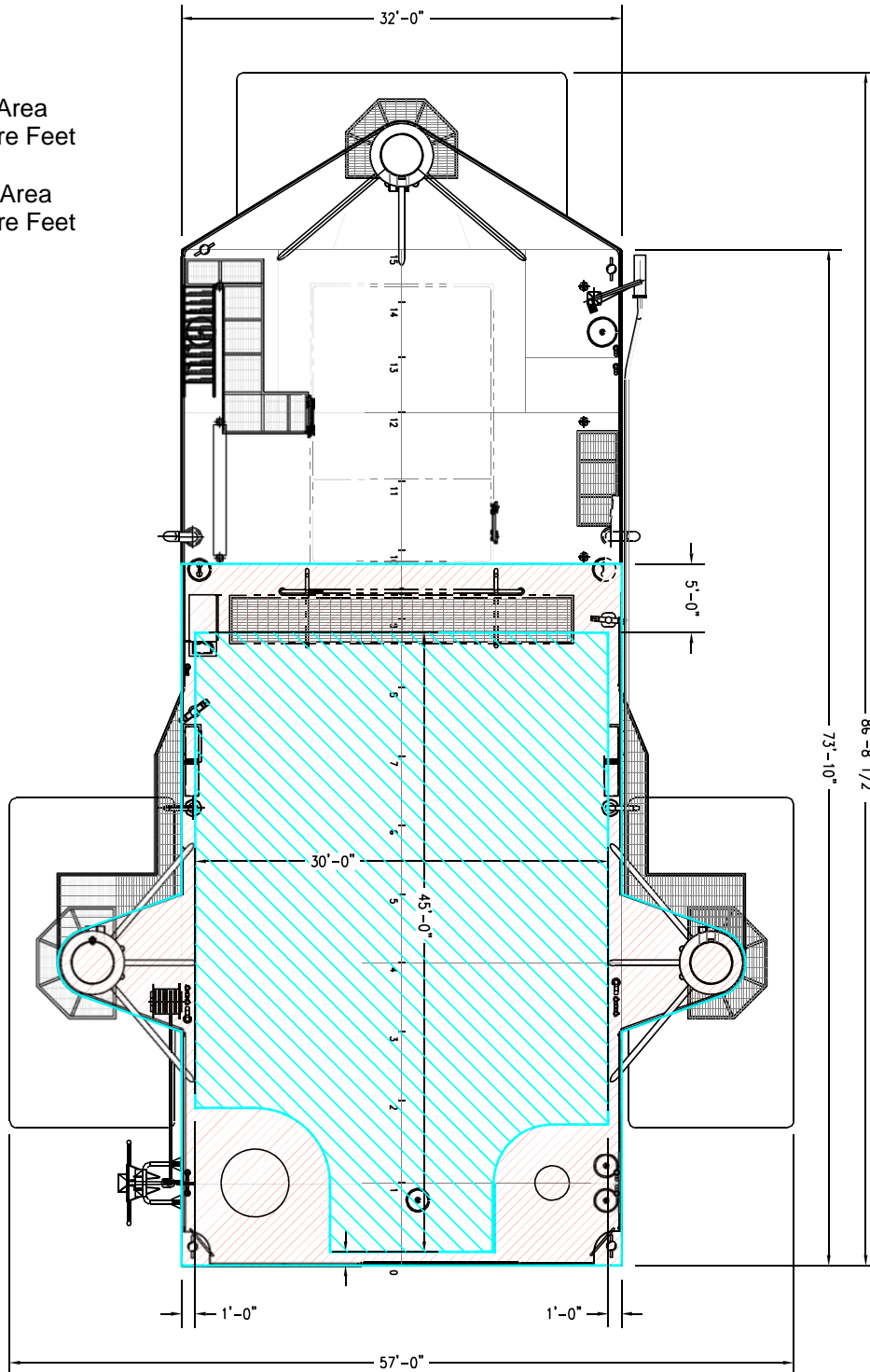




Open Deck Area

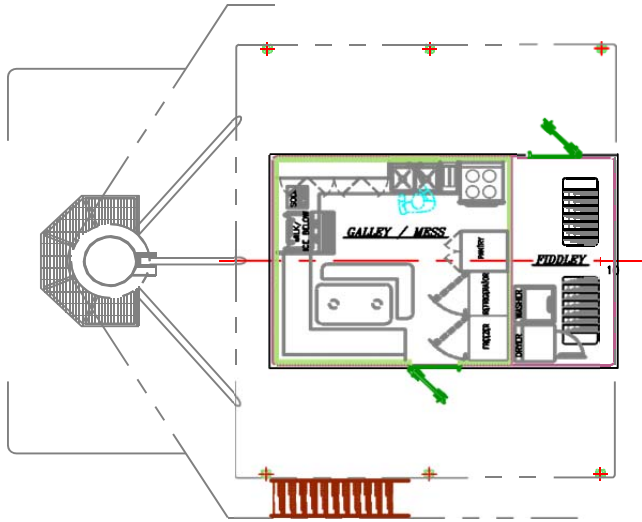
Total Deck Area
1,751 Square Feet

Clear Deck Area
1,181 Square Feet

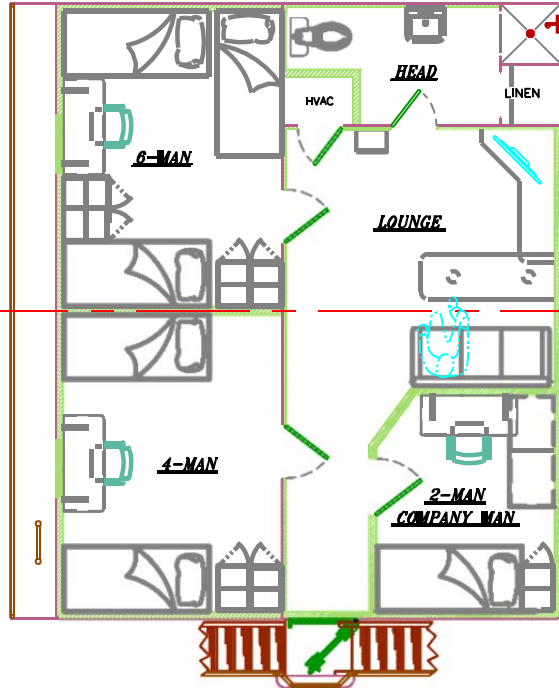




Main Deck Quarters



01 Level Quarters



02 Level Quarters

