



Overview

LEG

Leg Length	250 ft
Leg Diameter (Od)	90 in
Leg Tower Height	19 ft

HULL

Length (Overall)	148.5 ft
Length (Barge Only)	145 ft
Beam (Overall)	107 ft
Beam (Barge Only)	100 ft
Hull Depth	13 ft

PAD

Length	40 ft
Width	23 ft
Depth	4 ft
Bearing Load	N/A
Design	4-Way Slope

CRANE

	Port	Starboard
Load Rating	175 ton	175 ton
Make	RAM	RAM
Model	175KLRP-120	175KLRP-120
Boom Type	Lattice	Lattice
Boom Length	120 ft	120 ft
Crane Inst. Type	Tower Mount	Tower Mount

PROPULSION

Mains - Make	Cummins
Mains - Model	QSK 38
Horsepower	2,600 hp
Bow Thruster Equipped	Yes
Clutch Make/Reduction	Twin Disc 6.18:1
Consumption/Engine-Full	59.3 gph
Consumption/Engine-Half	30.1 gph

GENERATORS

Generator Engine Make	Cummins
Generator Engine Model	QSK 19
Generator Output	425 kw
Consumption/Gen	12.1 gph

DECK

Total Deck Area	8,788 ft ²
Clear Deck Area	6,262 ft ²
Additional Clear Area	N/A
Maximum Deck Load	800,000

CAPACITIES

Diesel Fuel	44,600 usg
Lube	880 usg
Hydraulic Oil	4,000 usg
Potable Water	41,200 usg
Watermaker	5,000 usg/day

ELECTRONIC AIDS & COMMUNICATION

Compass	Fully Equipped
Gps/Dgps	Fully Equipped
Radar(s)	Fully Equipped
Fathometer	Fully Equipped
Loudhailer	Fully Equipped
Satellite Phone	Fully Equipped
VHF Radio	Fully Equipped
Single Sideband Radio	Fully Equipped
EPIRB	Fully Equipped
GMDSS	Fully Equipped

PERSONNEL ACCOMMODATIONS

Total Accommodations	50
VIP Accommodations	4
Galley & Dining	Fully Equipped
TV Lounge	Fully Equipped
Laundry Facility	Fully Equipped
Air Condition / Heater	Std Central Units

PERFORMANCE

Estimated Speed	5 knots
Max Sep – Pad to Deck	231 ft
Max Working Water Depth	185 ft
Min Working Water Depth	11 ft

DOCUMENTATION

Class	None
Flag/ Port of Registry	USA / New Orleans, LA
USCG	Inspected
SOLAS	No
Official Number	1255151
IMO	9750646
Call Sign	WD12852
Year Built	2015
Builder	SEMCO
Zero Discharge	Yes
Registered Tonnage	N/A
International Tonnage	1,657

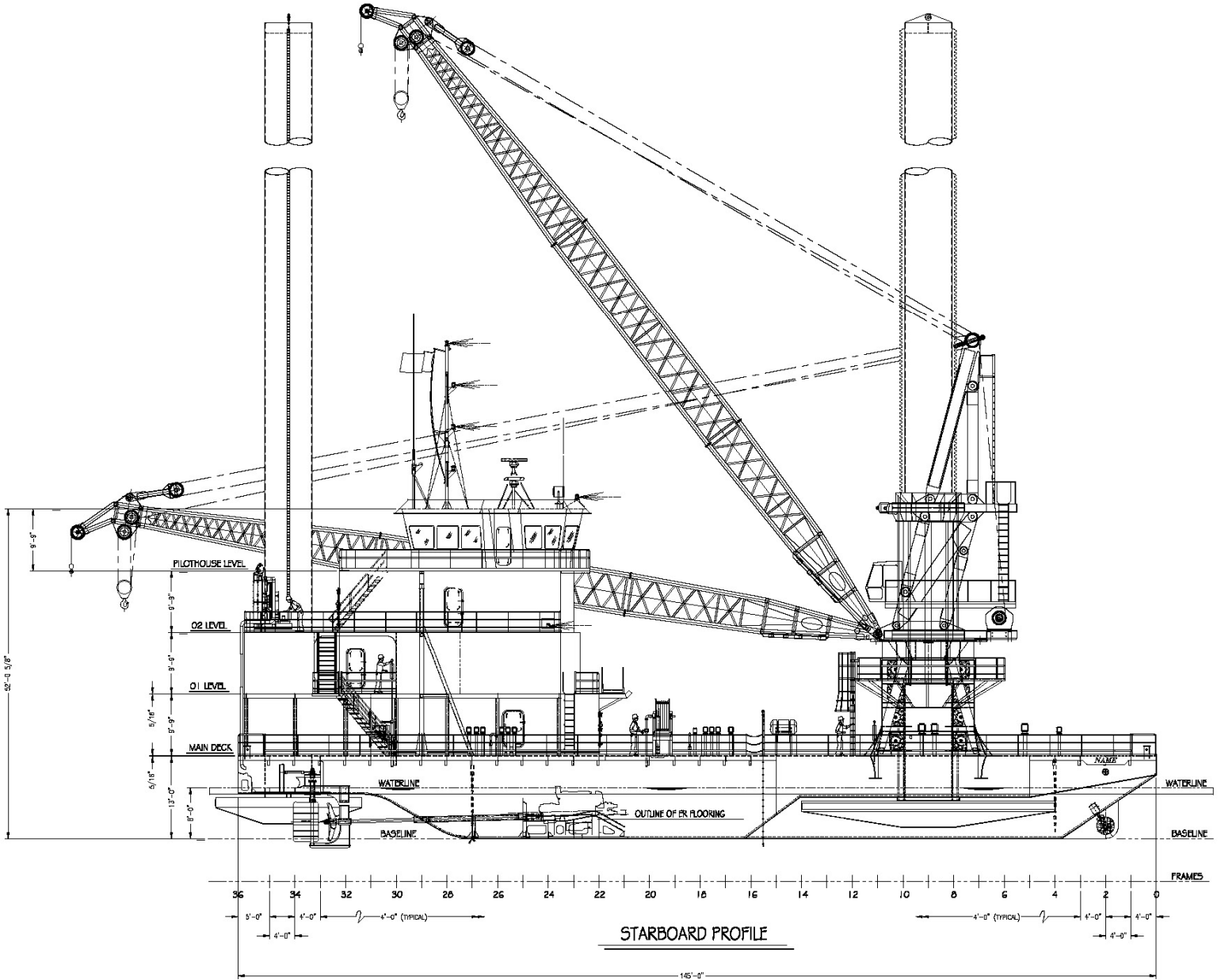


RAM 175 TON CRANE		
175KLRP-120 LE		
120 FT LATTICE BOOM		
MAXIMUM SAFE WORKING LOAD		
BOOM RADIUS (ft)	ONBOARD LOAD (lbs.)	OFFBOARD LOAD (lbs.)
30	350,000	283,228
35	350,000	274,981
40	350,000	266,750
45	350,000	258,524
50	312,810	252,864
55	281,110	224,901
60	254,690	201,876
65	232,330	182,617
70	213,170	166,304
75	196,560	152,324
80	182,030	140,232
85	169,210	129,683
90	157,810	120,408
95	147,620	112,213
100	138,440	104,916
105	130,140	98,400
110	122,590	92,551
115	115,700	87,295
120	109,380	82,569
125	100,310	75,618
128	82,230	61,228

FAST LINE RATED FOR 21,939 LBS. AT ALL RADII



Outboard Profile

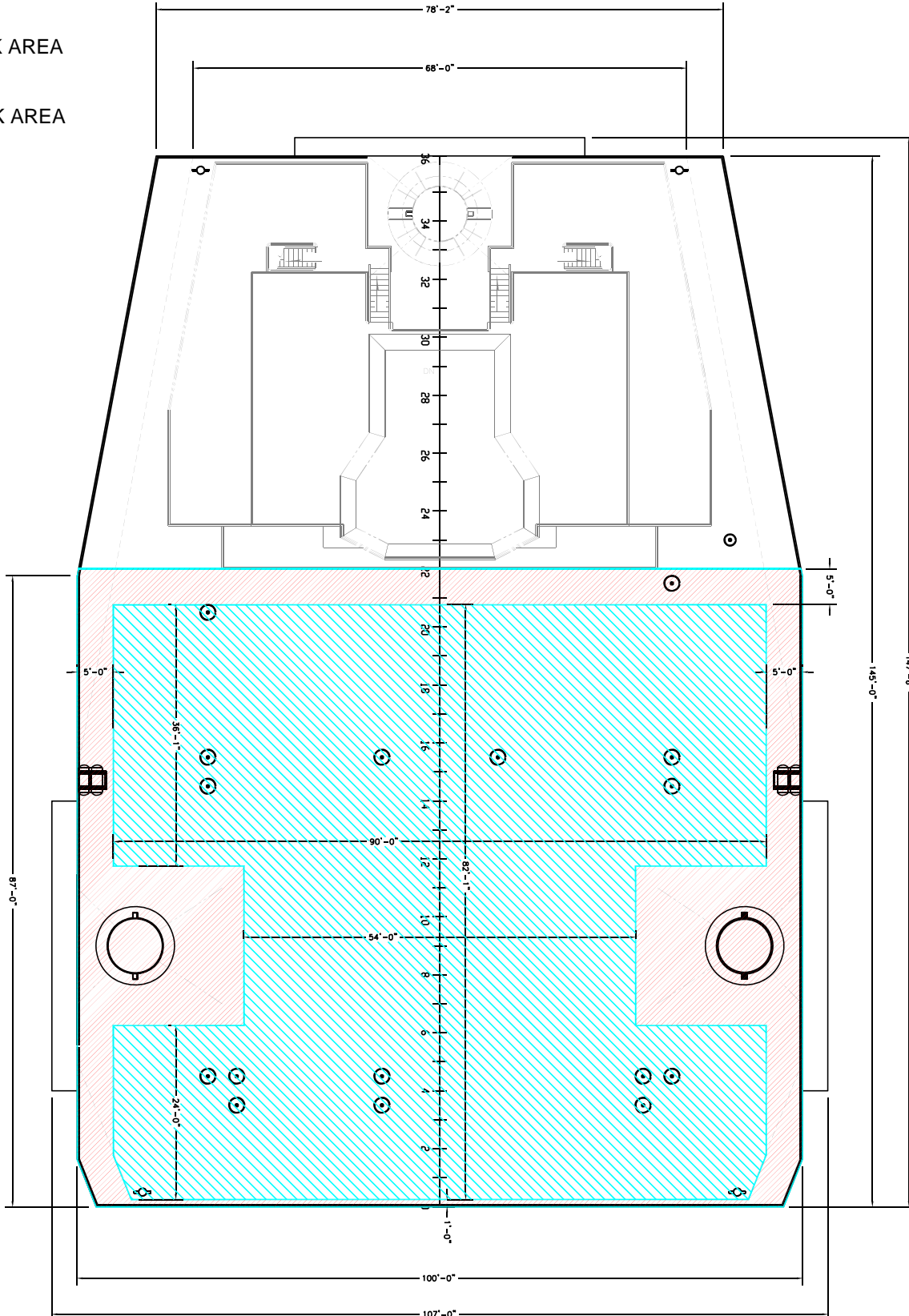




Open Deck Area

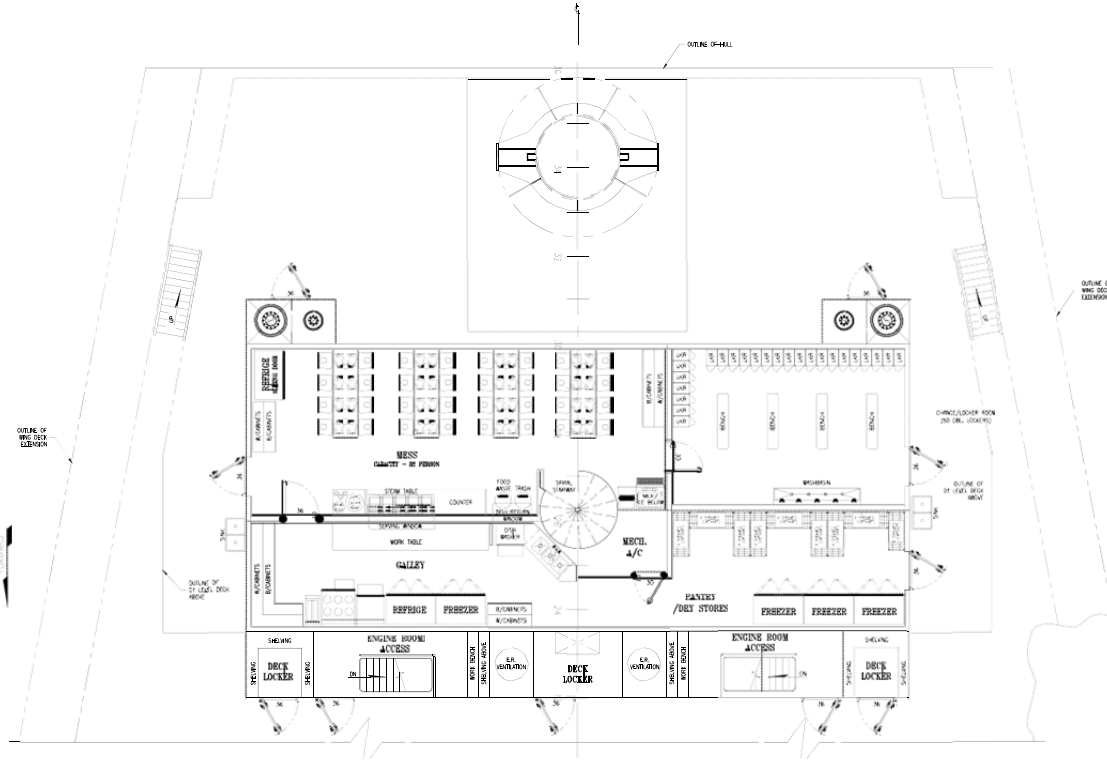
TOTAL DECK AREA
8,788 SQ FT

CLEAR DECK AREA
6,262 SQ FT

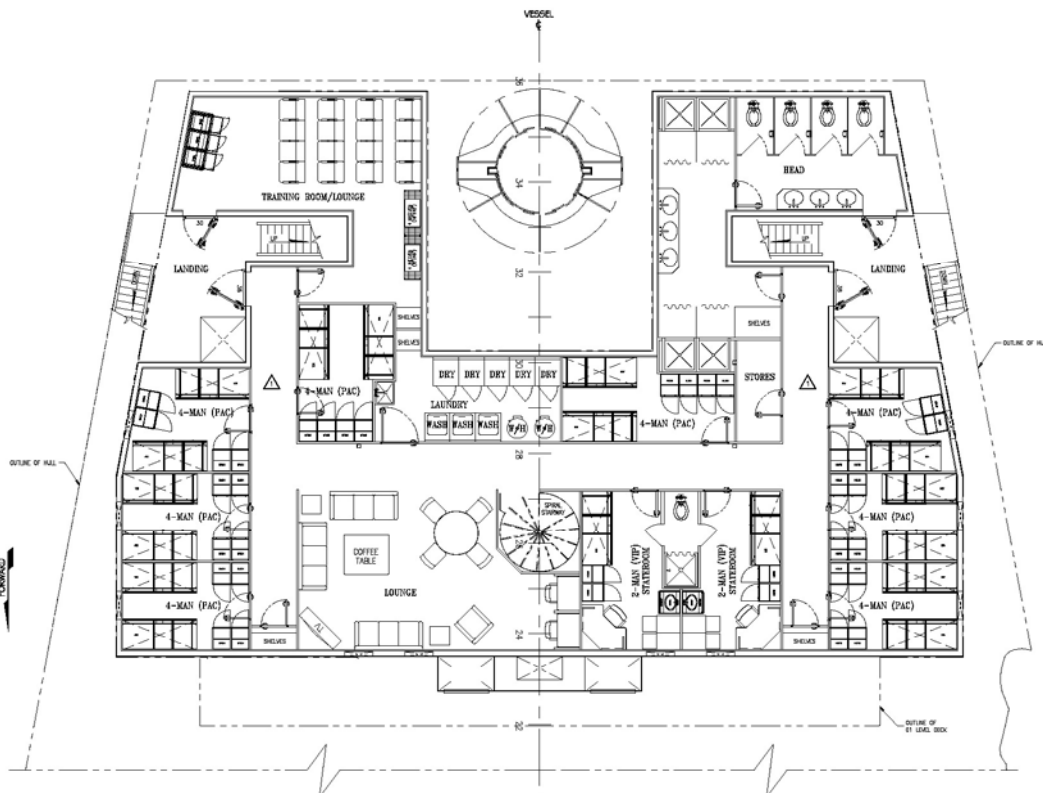




Main Deck Quarters

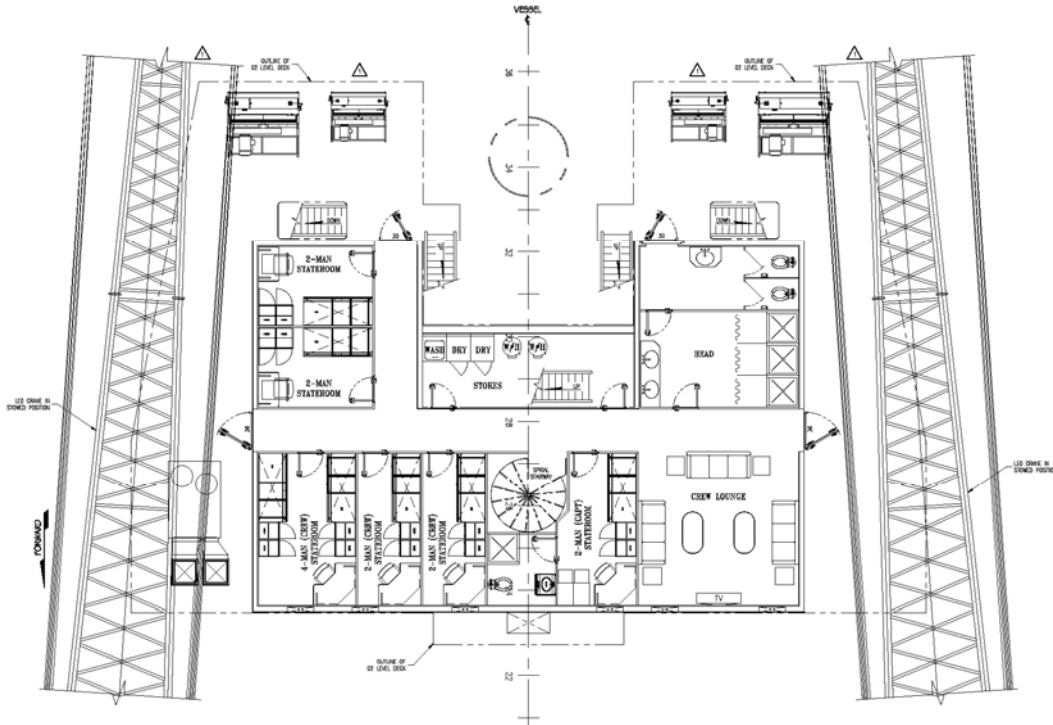


01 Level Quarters





02 Level Quarters



Pilothouse

