



## Overview

### LEG

Leg Length	120 ft
Leg Diameter (Od)	36 in
Leg Tower Height	12 ft

### HULL

Length (Overall)	86.5 ft
Length (Barge Only)	74 ft
Beam (Overall)	57 ft
Beam (Barge Only)	50 ft
Hull Depth	7 ft

### PAD

Length	24 ft
Width	12 ft
Depth	1.5 ft
Bearing Load	3,000 lbs/ft <sup>2</sup>
Design	2-Way Slope

### CRANE

	Port	Starboard
Load Rating	25 ton	12.5 ton
Make	Alaskan	Nautilus
Model	MCT 2570	12-5-3-70
Boom Type	Telescopic	Telescopic
Boom Length	70 ft	70 ft
Crane Inst. Type	Deck Mount	Deck Mount

### PROPULSION

Mains - Make	GM
Mains - Model	12V71
Horsepower	800 hp
Bow Thruster Equipped	No
Clutch Make/Reduction	Twin Disc 2:1
Consumption/Engine-Full	19.4 gph
Consumption/Engine-Half	9.7 gph

### GENERATORS

Generator Engine Make	GM
Generator Engine Model	3-71
Generator Output	80 kw
Consumption/Gen	6.4 gph

### DECK

Total Deck Area	2,117 ft <sup>2</sup>
Clear Deck Area	1,193 ft <sup>2</sup>
Additional Clear Area	N/A
Maximum Deck Load	150,000

### CAPACITIES

Diesel Fuel	3,304 usg
Lube	84 usg
Hydraulic Oil	958 usg
Potable Water	2,874 usg
Watermaker Equipped	No

### ELECTRONIC AIDS & COMMUNICATION

Compass	Fully Equipped
Gps/Dgps	Fully Equipped
Radar(s)	Fully Equipped
Fathometer	Fully Equipped
Loudhailer	Fully Equipped
Satellite Phone	Fully Equipped
VHF Radio	Fully Equipped
Single Sideband Radio	Fully Equipped
EPIRB	Fully Equipped
GMDSS	No

### PERSONNEL ACCOMMODATIONS

Total Accommodations	21
VIP Accommodations	2
Galley & Dining	Fully Equipped
TV Lounge	Fully Equipped
Laundry Facility	Fully Equipped
Air Condition / Heater	Std Central Units

### PERFORMANCE

Estimated Speed	5 knots
Max Sep – Pad to Deck	106 ft
Max Working Water Depth	80 ft
Min Working Water Depth	6 ft

### DOCUMENTATION

Class	None
Flag/ Port of Registry	USA / New Orleans, LA
USCG	Inspected
SOLAS	No
Official Number	609642
IMO	7947661
Call Sign	WDH5317
Year Built	1979
Builder	Sun Contractors
Registered Tonnage	97
International Tonnage	None



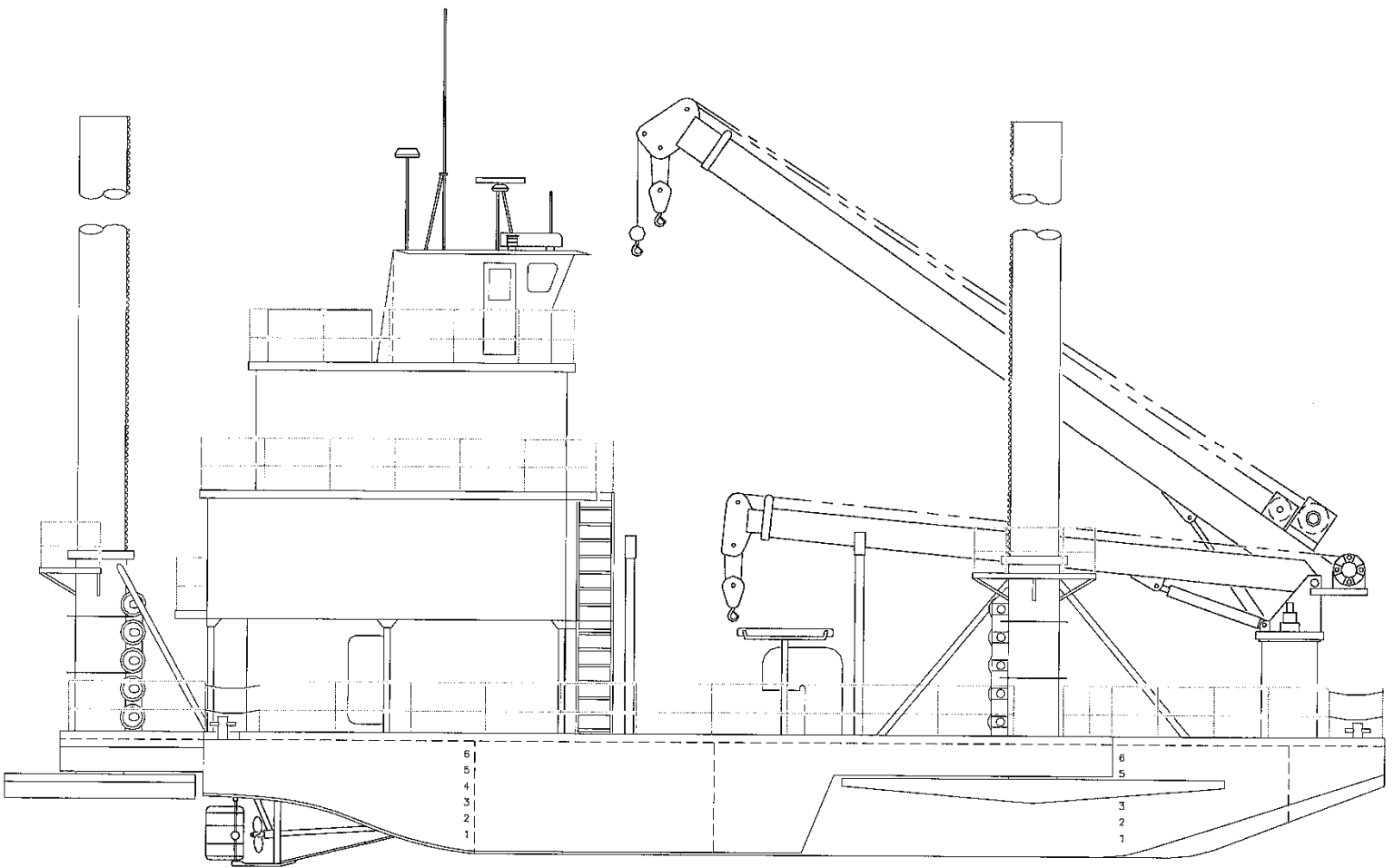
<b>ALASKAN 25 TON CRANE</b>		
<b>MCT 2570</b>		
<b>70 FT TELESCOPIC BOOM</b>		
<b>MAXIMUM SAFE WORKING LOAD</b>		
<b>50 FT BOOM RETRACTED</b>		
BOOM RADIUS (ft)	ONBOARD LOAD (lbs.)	OFFBOARD LOAD (lbs.)
10.10	51,019	34,013
13.40	35,349	23,566
25.20	18,928	12,619
36.10	12,943	8,629
44.00	9,487	6,325
48.60	7,950	5,300
50.00	4,772	3,181
<b>FAST LINE RATED FOR 3,181 LBS AT ALL RADII</b>		
<b>70 FT BOOM EXTENDED</b>		
BOOM RADIUS (ft)	ONBOARD LOAD (lbs.)	OFFBOARD LOAD (lbs.)
14.83	28,672	19,115
18.71	23,305	15,870
34.76	12,080	8,053
49.81	7,802	5,201
60.72	5,345	3,563
67.87	3,538	2,359
70.00	1,968	1,312
<b>FAST LINE RATED FOR 3,181 LBS UP TO 60 FT</b>		



<b>NAUTILUS 12.5 TON CRANE</b>		
<b>12-5-3-70</b>		
<b>70 FT TELESCOPIC BOOM</b>		
<b>MAXIMUM SAFE WORKING LOAD</b>		
<b>30 FT BOOM RETRACTED</b>		
BOOM RADIUS (ft)	ONBOARD LOAD (lbs.)	OFFBOARD LOAD (lbs.)
10	6,000	4,000
15	6,000	4,000
20	6,000	4,000
25	6,000	4,000
30	6,000	4,000
<b>70 FT BOOM EXTENDED</b>		
BOOM RADIUS (ft)	ONBOARD LOAD (lbs.)	OFFBOARD LOAD (lbs.)
10	6,000	4,000
15	6,000	4,000
20	6,000	4,000
25	6,000	4,000
30	6,000	4,000
35	6,000	4,000
40	6,000	4,000
45	6,000	4,000
50	6,000	4,000
55	6,000	4,000
60	4,000	2,600
70	3,000	2,000
<b>*CURRENT CONFIGURATION IS FOR 3 TONS</b>		



**Outboard Profile**

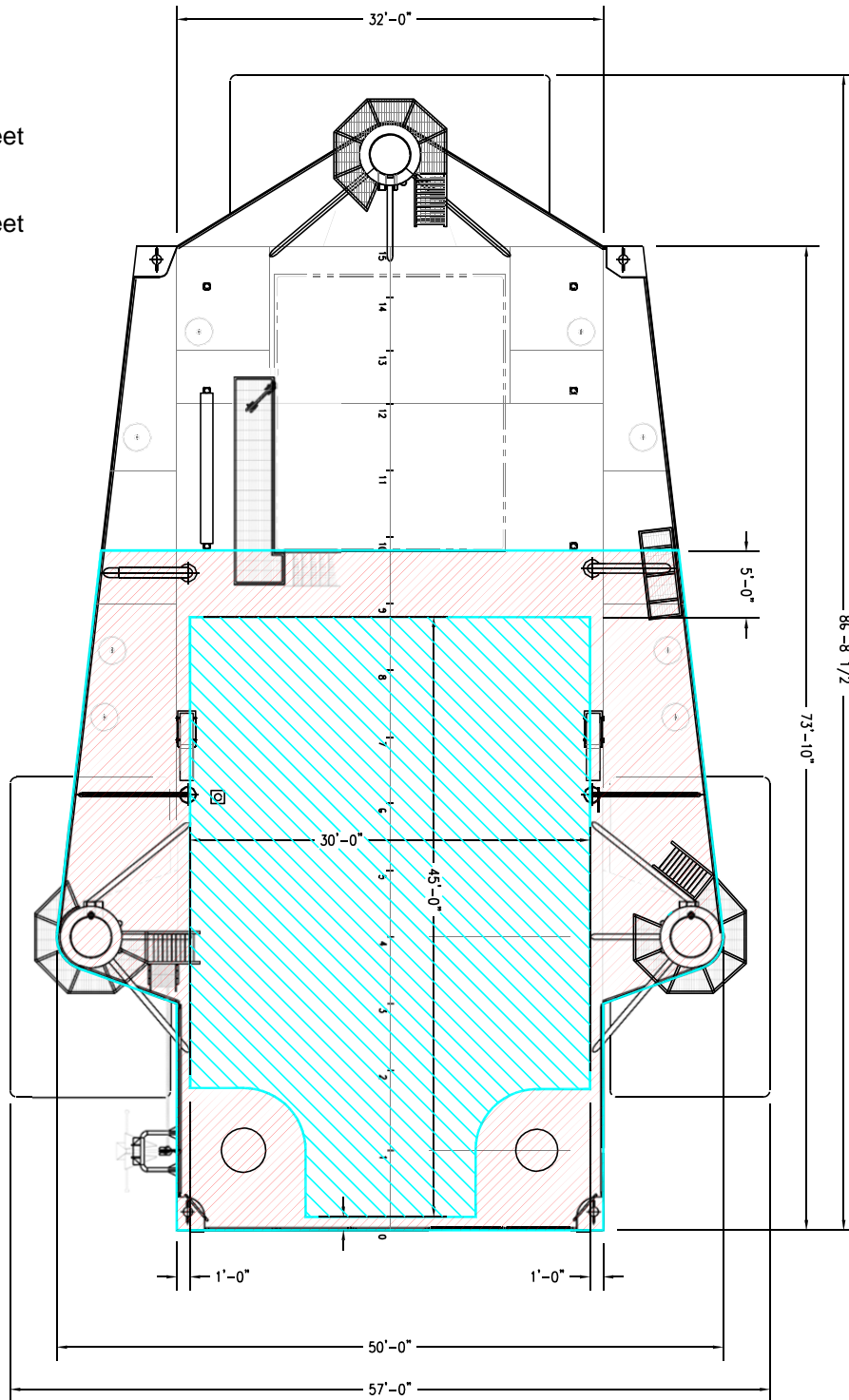




**Open Deck Area**

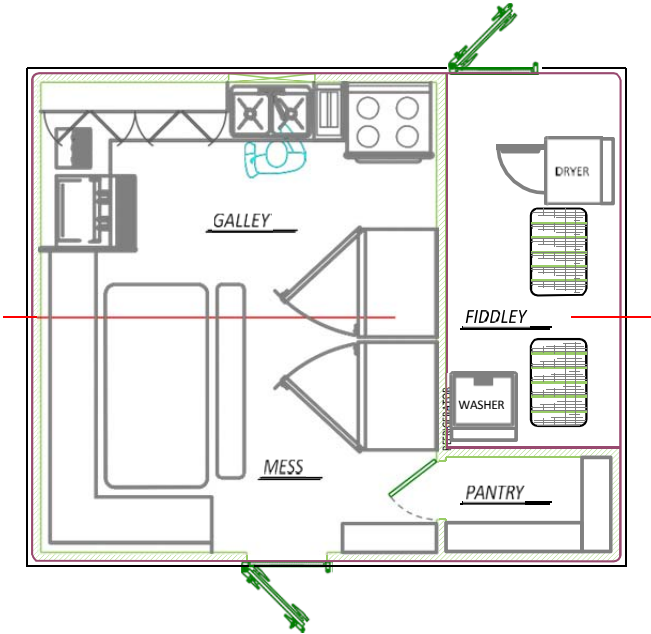
Total Deck Area  
2,117 Square Feet

Clear Deck Area  
1,193 Square Feet

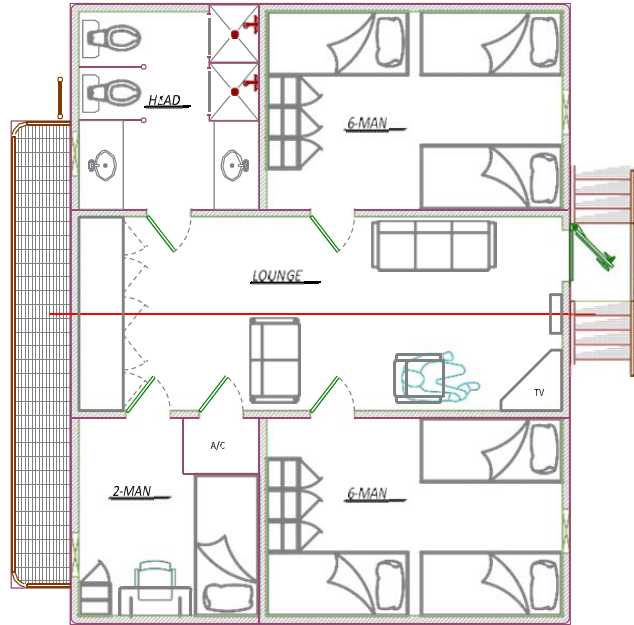




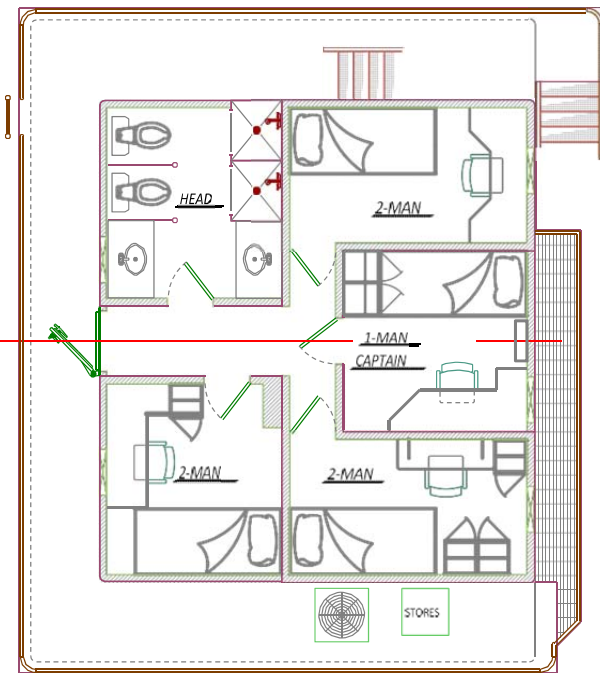
### Main Deck Quarters



### 01 Level Quarters



### 02 Level Quarters



### Pilothouse

