



## Overview

### LEG

Leg Length	175 ft
Leg Diameter (Od)	54 in
Leg Tower Height	13 ft

### HULL

Length (Overall)	113 ft
Length (Barge Only)	110 ft
Beam (Overall)	70 ft
Beam (Barge Only)	50 ft
Hull Depth	9 ft

### PAD

Length	26 ft
Width	14 ft
Depth	2 ft
Bearing Load	N/A
Design	4-Way Slope

### CRANE

	Port	Starboard
Load Rating	100 ton	8 ton
Make	RAM	Nautilus
Model	100-100	35-B4-60
Boom Type	Lattice	Fixed
Boom Length	100 ft	60 ft
Crane Inst. Type	Deck Mount	Deck Mount

### PROPULSION

Mains - Make	GM
Mains - Model	12V92
Horsepower	1050 hp
Bow Thruster Equipped	No
Clutch Make/Reduction	Twin Disc 5.05:1
Consumption/Engine-Full	32.4 gph
Consumption/Engine-Half	26.6 gph

### GENERATORS

Generator Engine Make	GM
Generator Engine Model	6-71
Generator Output	75 kw
Consumption/Gen	9.6 gph

### DECK

Total Deck Area	3,792 ft <sup>2</sup>
Clear Deck Area	2,396 ft <sup>2</sup>
Additional Clear Area	N/A
Maximum Deck Load	500,000

### CAPACITIES

Diesel Fuel	8,547 usg
Lube	98 usg
Hydraulic Oil	2,162 usg
Potable Water	13,625 usg
Watermaker Equipped	No

### ELECTRONIC AIDS & COMMUNICATION

Compass	Fully Equipped
Gps/Dgps	Fully Equipped
Radar(s)	Fully Equipped
Fathometer	Fully Equipped
Loudhailer	Fully Equipped
Satellite Phone	Fully Equipped
VHF Radio	Fully Equipped
Single Sideband Radio	Fully Equipped
EPIRB	Fully Equipped
GMDSS	No

### PERSONNEL ACCOMMODATIONS

Total Accommodations	29
VIP Accommodations	1
Galley & Dining	Fully Equipped
TV Lounge	Fully Equipped
Laundry Facility	Fully Equipped
Air Condition / Heater	Std Central Units

### PERFORMANCE

Estimated Speed	6 knots
Max Sep – Pad to Deck	155 ft
Max Working Water Depth	130 ft
Min Working Water Depth	8.5 ft

### DOCUMENTATION

Class	None
Flag/ Port of Registry	USA / New Orleans, LA
USCG	Inspected
SOLAS	No
Official Number	1062140
IMO	8765711
Call Sign	WDH5376
Year Built	1998
Builder	Conrad Industries
Zero Discharge	Yes
Registered Tonnage	168
International Tonnage	497



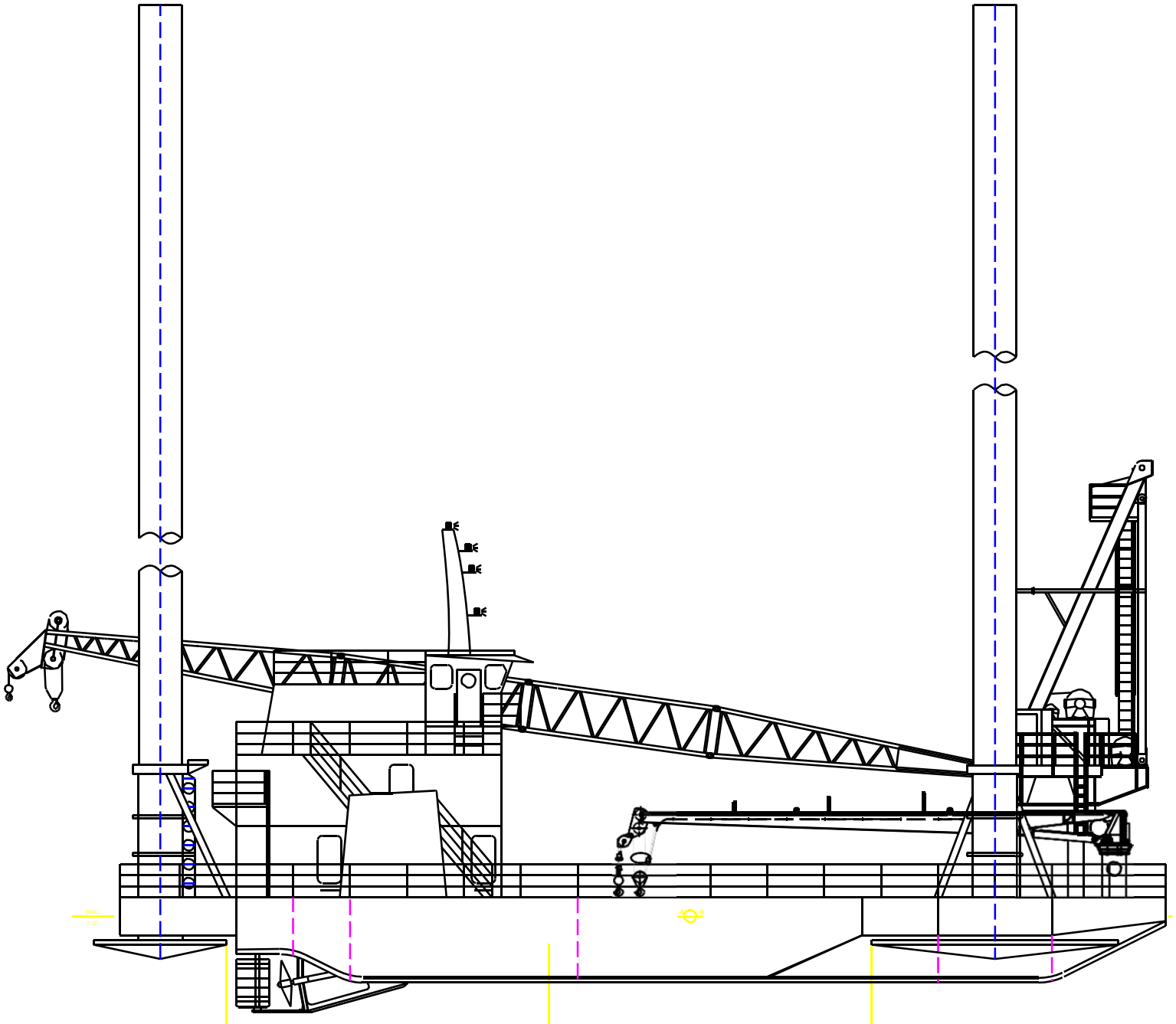
<b>RAM 100 TON CRANE</b>		
<b>100-100 100 FT LATTICE BOOM MAXIMUM SAFE WORKING LOAD</b>		
<b>BOOM RADIUS (ft)</b>	<b>ONBOARD LOAD (lbs.)</b>	<b>OFFBOARD LOAD (lbs.)</b>
23	200,000	133,333
25	200,000	133,333
30	200,000	133,333
35	171,224	114,149
40	148,965	99,310
45	131,238	87,492
50	117,458	78,305
55	105,830	70,553
60	96,305	64,203
65	88,216	58,811
70	81,291	54,194
75	75,316	50,211
80	70,081	46,721
85	65,526	43,684
90	61,332	40,888
95	57,653	38,435
100	53,040	35,360
105	40,708	27,139
106	40,000	26,667
<b>FAST LINE RATED FOR 12,000 LBS AT ALL RADII</b>		



<b>NAUTILUS 8 TON CRANE</b>		
<b>35-B4-60</b>		
<b>60 FT FIXED BOOM</b>		
<b>MAXIMUM SAFE WORKING LOAD</b>		
<b>BOOM RADIUS (ft)</b>	<b>ONBOARD LOAD (lbs.)</b>	<b>OFFBOARD LOAD (lbs.)</b>
10	17,610	11,590
15	16,545	10,880
20	15,506	10,187
25	13,393	8,779
30	10,920	7,130
35	9,168	5,962
40	7,891	5,091
45	6,849	4,416
50	6,042	3,878
55	5,383	3,439
60	3,745	2,347
<b>FAST LINE RATED FOR 2,263 LBS AT ALL RADII</b>		



**Outboard Profile**

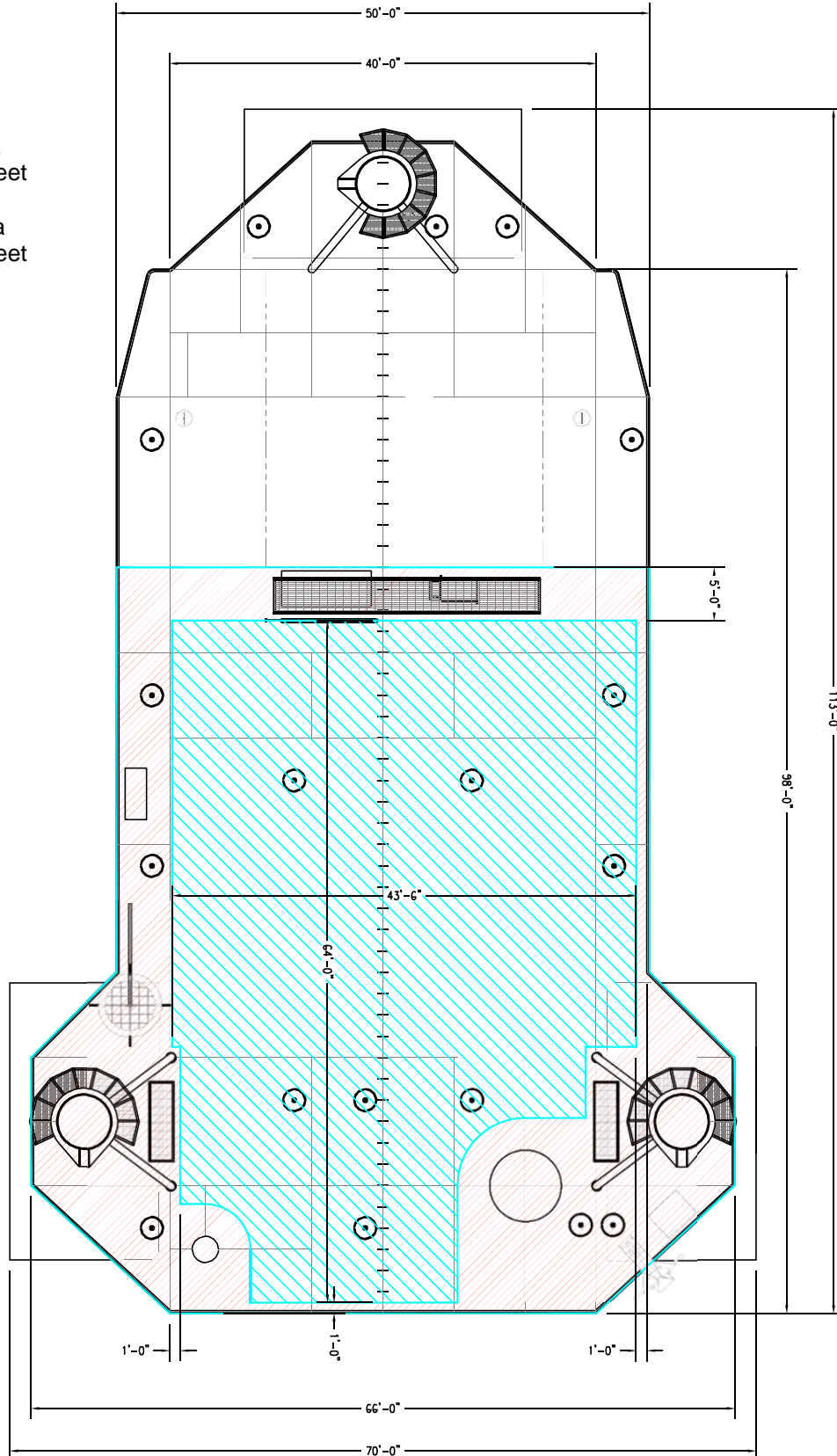




**Open Deck Area**

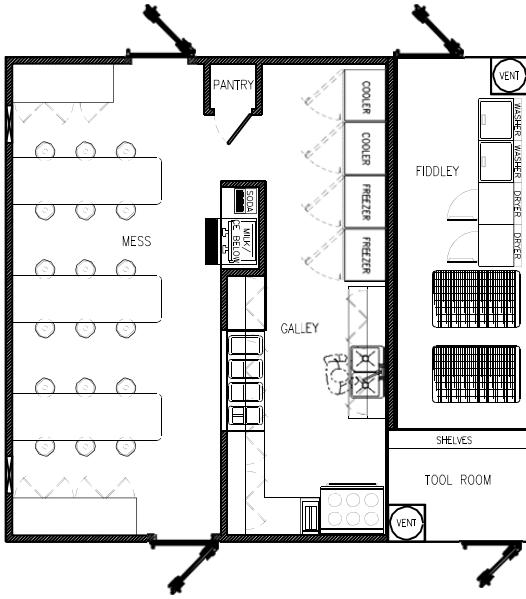
Total Deck Area  
3,792 Square Feet

Clear Deck Area  
2,396 Square Feet

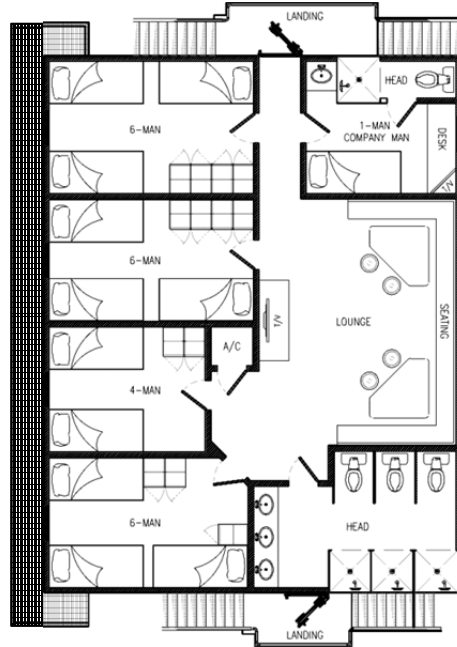




### Main Deck Quarters



### 01 Level Quarters



### 02 Level Quarters / Pilothouse

