

Overview

LEG

Leg Length	130 ft
Leg Diameter (Od)	42 in
Leg Tower Height	14 ft

HULL

Length (Overall)	90.5 ft
Length (Barge Only)	78 ft
Beam (Overall)	63 ft
Beam (Barge Only)	38 ft
Hull Depth	8 ft

PAD

Length	24 ft
Width	12 ft
Depth	2 ft
Bearing Load	3,000 lbs/ft ²
Design	4-Way Slope

CRANE

	Port	Starboard
Load Rating	40 ton	10 ton
Make	Nautilus	EBI
Model	40-20-80	C20B-50
Boom Type	Fixed	Fixed
Boom Length	80 ft	50 ft
Crane Inst. Type	Deck Mount	Deck Mount

PROPULSION

Mains - Make	GM
Mains - Model	12V71
Horsepower	800 hp
Bow Thruster Equipped	No
Clutch Make/Reduction	Twin Disc 3.5:1
Consumption/Engine-Full	19.4 gph
Consumption/Engine-Half	9.7 gph

GENERATORS

Generator Engine Make	GM
Generator Engine Model	8V71
Generator Output	100 kw
Consumption/Gen	10 gph

DECK

Total Deck Area	2,338 ft ²
Clear Deck Area	1,292 ft ²
Additional Clear Area	N/A
Maximum Deck Load	130,000

CAPACITIES

Diesel Fuel	4,000 usg
Lube	150 usg
Hydraulic Oil	700 usg
Potable Water	4,580 usg
Watermaker Equipped	No

ELECTRONIC AIDS & COMMUNICATION

Compass	Fully Equipped
Gps/Dgps	Fully Equipped
Radar(s)	Fully Equipped
Fathometer	Fully Equipped
Loudhailer	Fully Equipped
Satellite Phone	Fully Equipped
VHF Radio	Fully Equipped
Single Sideband Radio	Fully Equipped
EPIRB	Fully Equipped
GMDSS	No

PERSONNEL ACCOMMODATIONS

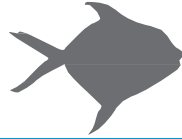
Total Accommodations	27
VIP Accommodations	2
Galley & Dining	Fully Equipped
TV Lounge	Fully Equipped
Laundry Facility	Fully Equipped
Air Condition / Heater	Std Central Units

PERFORMANCE

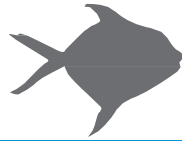
Estimated Speed	5 knots
Max Sep – Pad to Deck	114 ft
Max Working Water Depth	94 ft
Min Working Water Depth	7 ft

DOCUMENTATION

Class	None
Flag/ Port of Registry	USA / New Orleans, LA
USCG	Inspected
SOLAS	No
Official Number	635861
IMO	8765905
Call Sign	WDH5078
Year Built	1981
Builder	Blue Streak
Registered Tonnage	196
International Tonnage	None



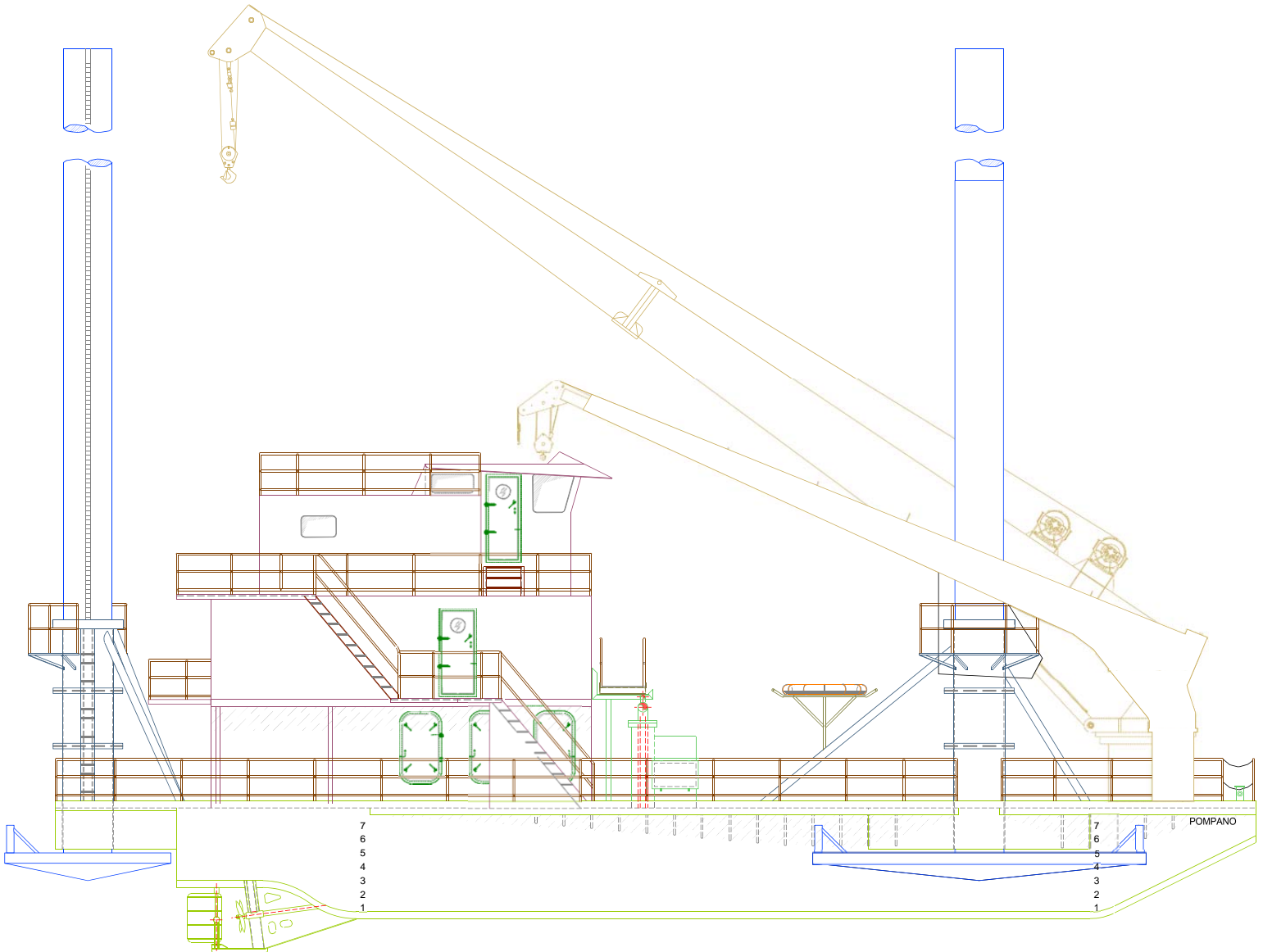
NAUTILUS 40 TON CRANE		
40-2-80		
80 FT FIXED BOOM		
MAXIMUM SAFE WORKING LOAD		
BOOM RADIUS (ft)	ONBOARD LOAD	OFFBOARD LOAD (lbs.)
11	41,910	41,910
15	41,910	36,000
20	41,910	29,460
25	39,500	26,300
30	35,000	23,300
35	31,500	21,000
40	29,500	19,660
45	26,300	17,530
50	23,700	15,800
55	21,300	14,200
60	19,300	12,860
65	17,300	11,530
70	15,100	10,060
75	12,300	8,200
78	7,000	4,660
FAST LINES RATED FOR 2,330 AT ALL RADII		
*CURRENT CONFIGURATION IS FOR 20 TONS		



EBI 10 TON CRANE		
C20B-50 50 FT FIXED BOOM MAXIMUM SAFE WORKING LOAD		
BOOM RADIUS (ft)	ONBOARD LOAD (lbs.)	OFFBOARD LOAD (lbs.)
10	19,450	17,075
15	19,450	12,950
20	17,413	11,425
25	13,288	8,675
30	10,138	6,576
35	7,888	5,075
40	6,388	4,075
45	5,113	3,225
50	3,988	2,475



Outboard Profile

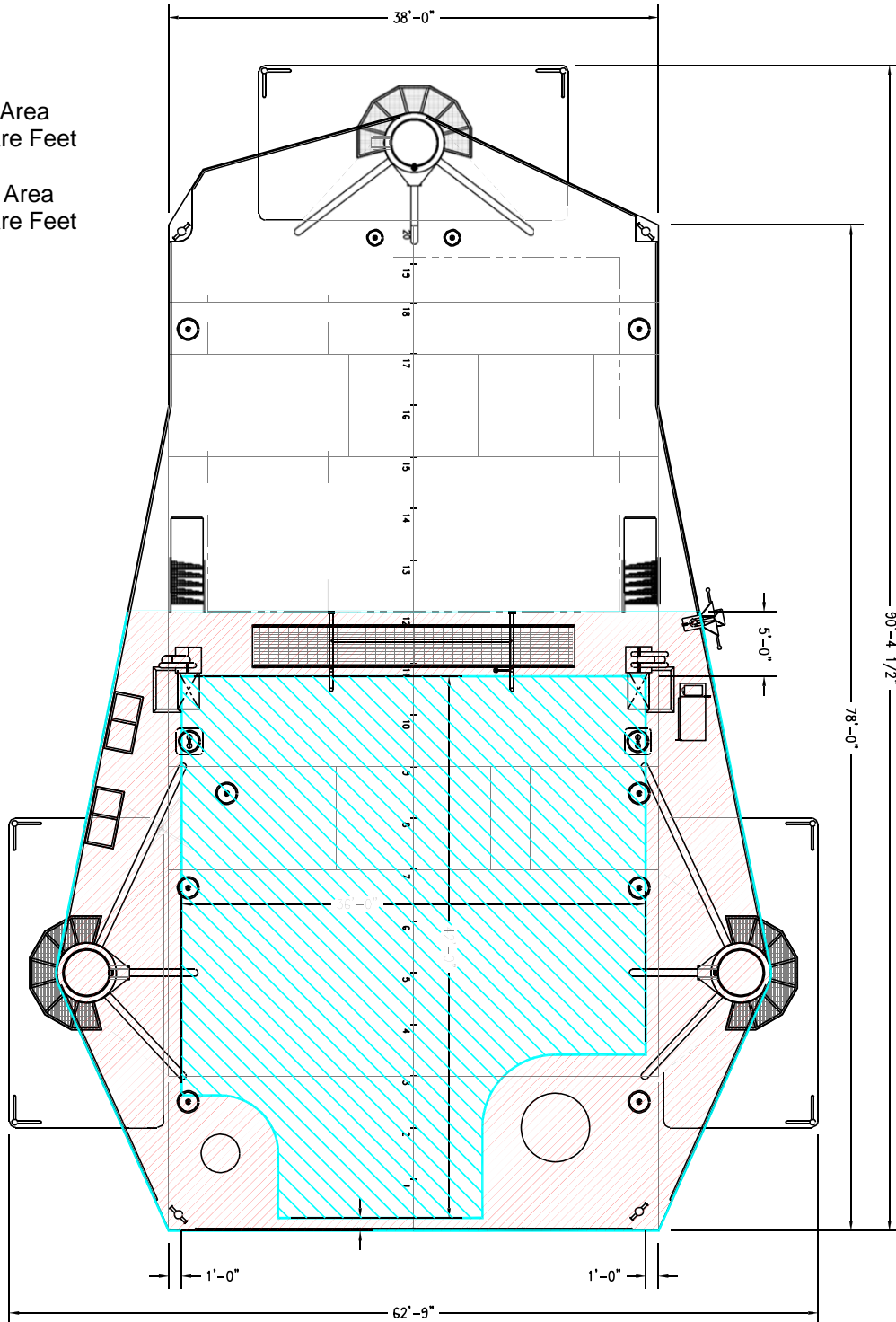




Open Deck Area

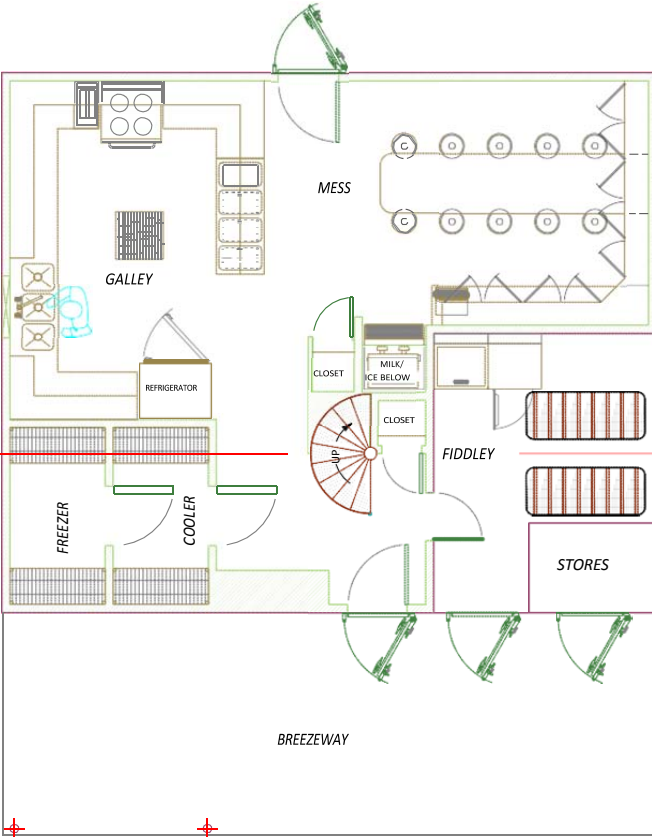
Total Deck Area
2,338 Square Feet

Clear Deck Area
1,292 Square Feet

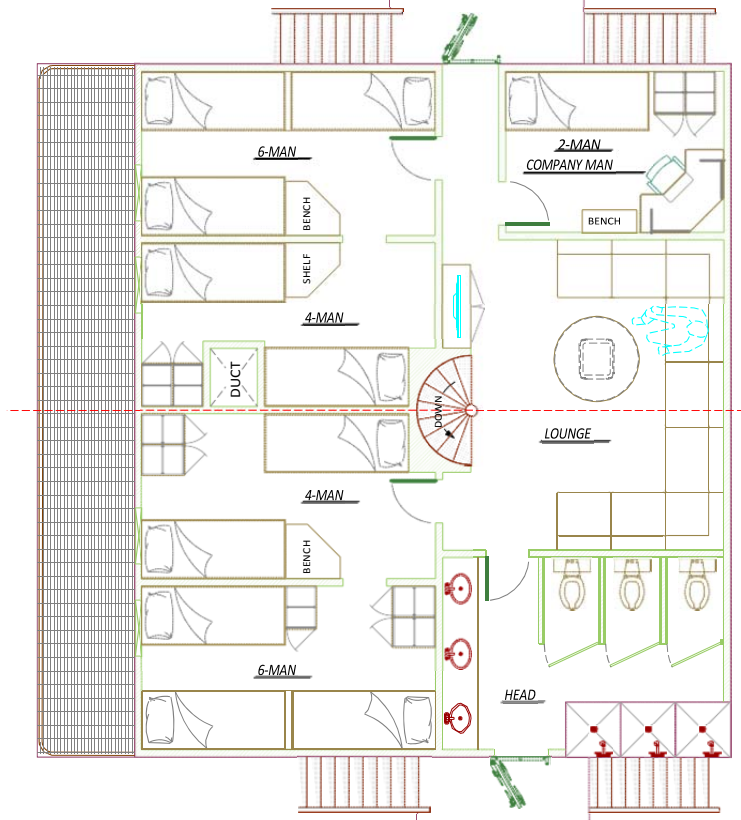




Main Deck Quarters



01 Level Quarters



02 Level Quarters

