



Overview

LEG

Leg Length	190 ft
Leg Diameter (Od)	60 in
Leg Tower Height	11 ft

HULL

Length (Overall)	113 ft
Length (Barge Only)	110.25 ft
Beam (Overall)	70 ft
Beam (Barge Only)	64.5 ft
Hull Depth	10 ft

PAD

Length	26 ft
Width	14 ft
Depth	2 ft
Bearing Load	N/A
Design	4-Way Slope

CRANE

	Port	Starboard
Load Rating	100 ton	25 ton
Make	RAM	RAM
Model	100-100	25-45/70
Boom Type	Lattice	Telescopic
Boom Length	100 ft	70 ft
Crane Inst. Type	Deck Mount	Deck Mount

PROPULSION

Mains - Make	CAT
Mains - Model	3412
Horsepower	1080 hp
Bow Thruster Equipped	No
Clutch Make/Reduction	Twin Disc 4.59:1
Consumption/Engine-Full	37.4 gph
Consumption/Engine-Half	21.7 gph

GENERATORS

Generator Engine Make	CAT
Generator Engine Model	3306
Generator Output	75 kw
Consumption/Gen	9.5 gph

DECK

Total Deck Area	4,345 ft ²
Clear Deck Area	2,828 ft ²
Additional Clear Area	N/A
Maximum Deck Load	700,000

CAPACITIES

Diesel Fuel	9,726 usg
Lube	300 usg
Hydraulic Oil	3,508 usg
Potable Water	15,196 usg
Watermaker Equipped	No

ELECTRONIC AIDS & COMMUNICATION

Compass	Fully Equipped
Gps/Dgps	Fully Equipped
Radar(s)	Fully Equipped
Fathometer	Fully Equipped
Loudhailer	Fully Equipped
Satellite Phone	Fully Equipped
VHF Radio	Fully Equipped
Single Sideband Radio	Fully Equipped
EPIRB	Fully Equipped
GMDSS	No

PERSONNEL ACCOMMODATIONS

Total Accommodations	29
VIP Accommodations	1
Galley & Dining	Fully Equipped
TV Lounge	Fully Equipped
Laundry Facility	Fully Equipped
Air Condition / Heater	Std Central Units

PERFORMANCE

Estimated Speed	5 knots
Max Sep – Pad to Deck	179 ft
Max Working Water Depth	153 ft
Min Working Water Depth	8.5 ft

DOCUMENTATION

Class	None
Flag/ Port of Registry	USA / New Orleans, LA
USCG	Inspected
SOLAS	No
Official Number	1091526
IMO	8764755
Call Sign	WDH5099
Year Built	2000
Builder	Conrad Industries
Zero Discharge	Yes
Registered Tonnage	189
International Tonnage	637



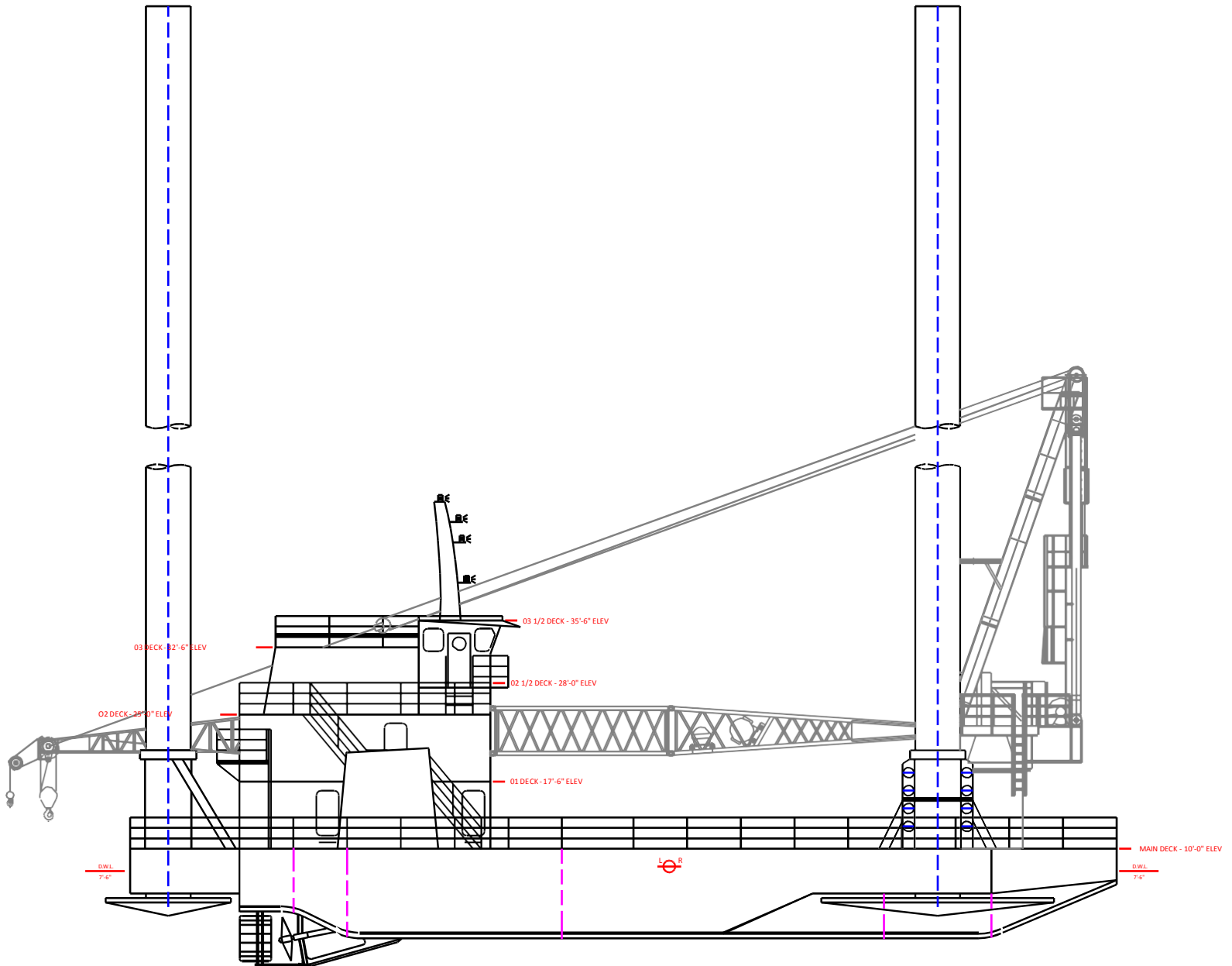
RAM 100 TON CRANE		
100-100		
100 FT LATTICE BOOM		
MAXIMUM SAFE WORKING LOAD		
BOOM RADIUS (ft)	ONBOARD LOAD (lbs.)	OFFBOARD LOAD (lbs.)
23	200,000	133,333
25	200,000	133,333
30	200,000	133,333
35	171,224	114,149
40	148,965	99,310
45	131,238	87,492
50	117,458	78,305
55	105,830	70,553
60	96,305	64,203
65	88,216	58,811
70	81,291	54,194
75	75,316	50,211
80	70,081	46,721
85	65,526	43,684
90	61,332	40,888
95	57,653	38,435
100	53,040	35,360
105	40,708	27,139
106	40,000	26,667
FAST LINE RATED FOR 12,000 LBS AT ALL RADII		



RAM 25 TON CRANE		
25-45/70		
70 FT TELESCOPIC BOOM		
MAXIMUM SAFE WORKING LOAD		
45 FT BOOM RETRACTED		
BOOM RADIUS (ft)	ONBOARD LOAD (lbs.)	OFFBOARD LOAD (lbs.)
8	50,700	33,800
10	50,700	33,800
15	47,000	31,300
20	40,200	26,800
25	32,500	21,700
30	29,700	19,800
35	24,200	16,200
40	22,000	14,700
45	16,000	10,700
FAST LINE RATED FOR 5,570 LBS AT ALL RADII		
70 FT BOOM EXTENDED		
BOOM RADIUS (ft)	ONBOARD LOAD (lbs.)	OFFBOARD LOAD (lbs.)
10	47,600	31,700
15	38,300	25,500
20	35,200	23,500
25	29,000	19,900
30	26,000	17,300
35	23,100	15,400
40	18,600	12,400
45	14,500	9,700
50	12,900	8,600
55	11,800	7,900
60	10,700	7,200
65	9,900	6,600
70	6,800	4,600
FAST LINE RATED FOR 4,600 LBS AT ALL RADII		



Outboard Profile

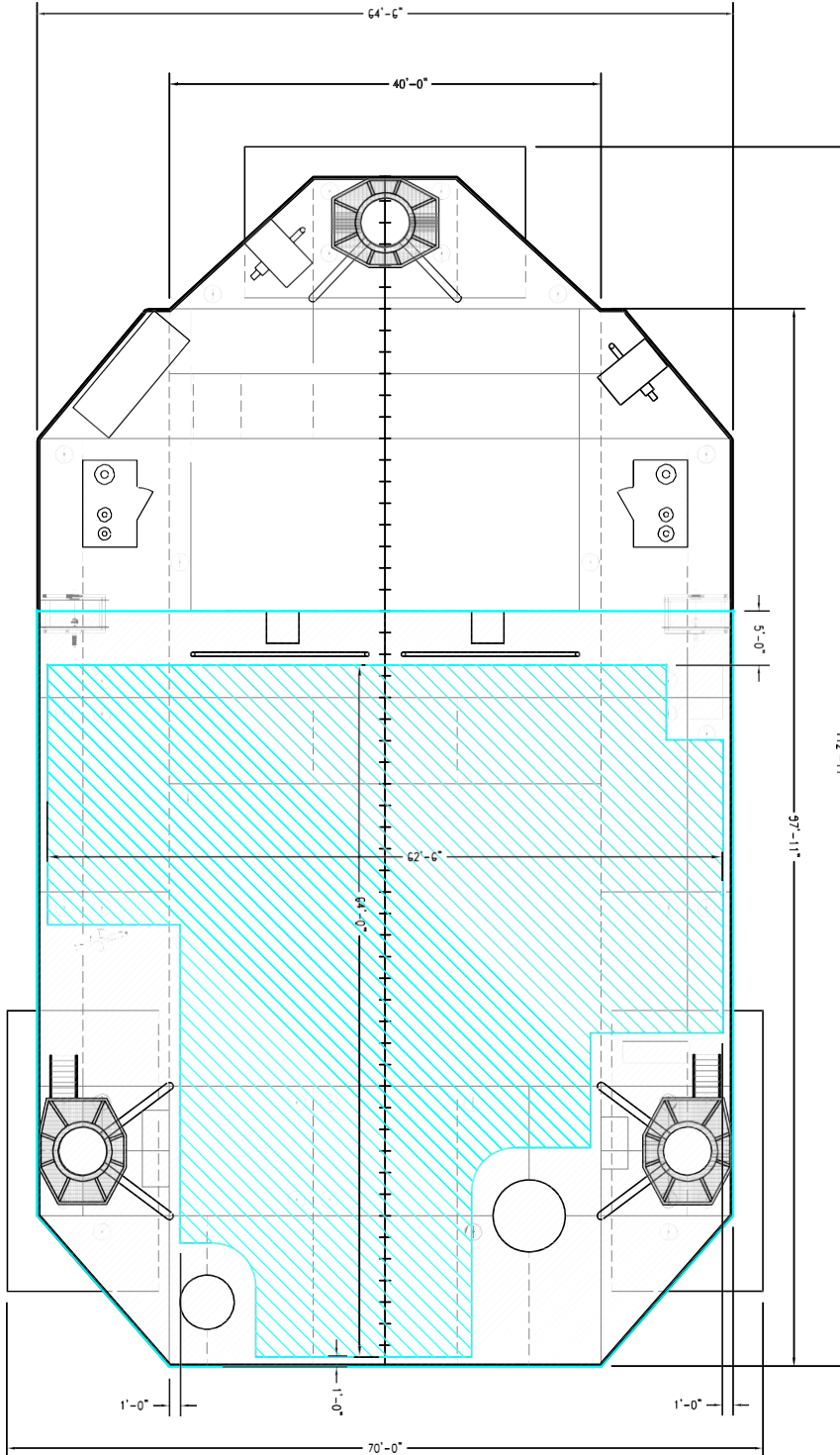




Open Deck Area

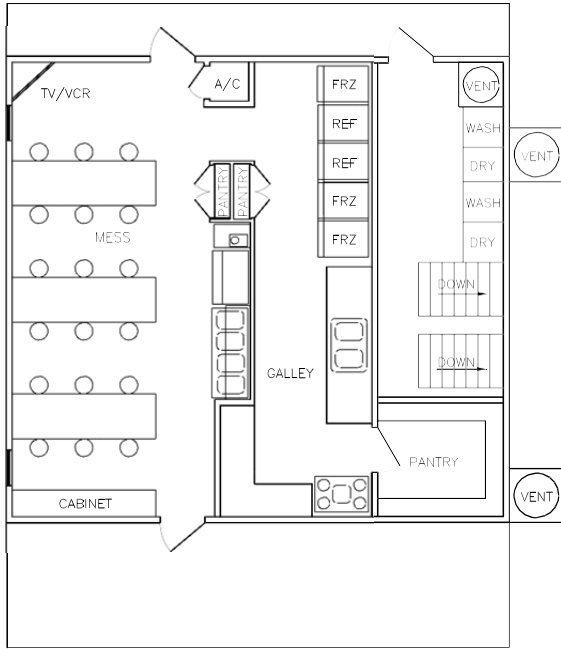
Total Deck Area
4,345 Square Feet

Clear Deck Area
2,828 Square Feet

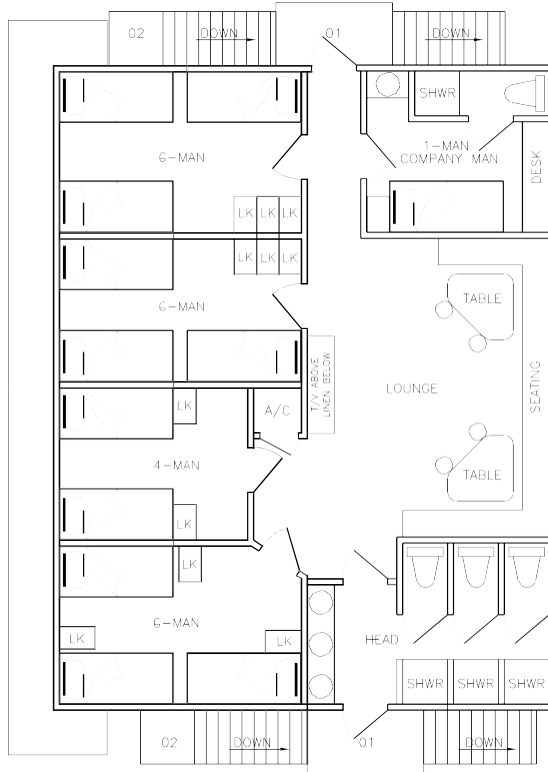




Main Deck Quarters



01 Level Quarters



02 Level Quarters

