



## Overview

### LEG

Leg Length	105 ft
Leg Diameter (Od)	36 in
Leg Tower Height	13.5 ft

### HULL

Length (Overall)	86.5 ft
Length (Barge Only)	74 ft
Beam (Overall)	57 ft
Beam (Barge Only)	32 ft
Hull Depth	7 ft

### PAD

Length	24 ft
Width	12 ft
Depth	1.5 ft
Bearing Load	3,000 lbs/ft <sup>2</sup>
Design	2-Way Slope

### CRANE

	Port	Starboard
Load Rating	15 ton	25 ton
Make	OECO	Alaskan
Model	99C02	MCT 2570
Boom Type	Telescopic	Telescopic
Boom Length	70 ft	70 ft
Crane Inst. Type	Deck Mount	Deck Mount

### PROPULSION

Mains - Make	GM
Mains - Model	12V71
Horsepower	800 hp
Bow Thruster Equipped	No
Clutch Make/Reduction	Twin Disc 3:1
Consumption/Engine-Full	19.4 gph
Consumption/Engine-Half	9.7 gph

### GENERATORS

Generator Engine Make	GM
Generator Engine Model	4-71
Generator Output	50 kw
Consumption/Gen	6.4 gph

### DECK

Total Deck Area	1,872 ft <sup>2</sup>
Clear Deck Area	1,179 ft <sup>2</sup>
Additional Clear Area	N/A
Maximum Deck Load	110,000

### CAPACITIES

Diesel Fuel	2,230 usg
Lube	115 usg
Hydraulic Oil	718 usg
Potable Water	2,874 usg
Watermaker Equipped	No

### ELECTRONIC AIDS & COMMUNICATION

Compass	Fully Equipped
Gps/Dgps	Fully Equipped
Radar(s)	Fully Equipped
Fathometer	Fully Equipped
Loudhailer	Fully Equipped
Satellite Phone	Fully Equipped
VHF Radio	Fully Equipped
Single Sideband Radio	Fully Equipped
EPIRB	Fully Equipped
GMDSS	No

### PERSONNEL ACCOMMODATIONS

Total Accommodations	21
VIP Accommodations	2
Galley & Dining	Fully Equipped
TV Lounge	Fully Equipped
Laundry Facility	Fully Equipped
Air Condition / Heater	Std Central Units

### PERFORMANCE

Estimated Speed	6 knots
Max Sep – Pad to Deck	93 ft
Max Working Water Depth	70 ft
Min Working Water Depth	6 ft

### DOCUMENTATION

Class	None
Flag/ Port of Registry	USA / New Orleans, LA
USCG	Inspected
SOLAS	No
Official Number	614603
IMO	8033510
Call Sign	WDH5162
Year Built	1980
Builder	Sun Contractors
Registered Tonnage	97
International Tonnage	None



**OECO 15 TON CRANE\***

**99C02**

**70 FT TELESCOPIC BOOM**

**MAXIMUM SAFE WORKING LOAD**

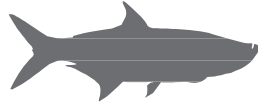
**50 FT BOOM RETRACTED**

BOOM RADIUS (ft)	ONBOARD LOAD (lbs.)	OFFBOARD LOAD (lbs.)
7	16,000	10,667
13	16,000	10,667
17	15,800	10,533
25	10,440	6,960
32	7,346	4,897
38	5,604	3,736
43	4,555	3,037
47	3,925	2,617
49	3,586	2,391
50	3,478	2,319

**70 FT BOOM EXTENDED**

BOOM RADIUS (ft)	OFFBOARD LOAD (lbs.)	ONBOARD LOAD (lbs.)
10	16,000	10,667
18	12,000	8,000
24	9,800	6,533
35	6,828	4,552
45	4,619	3,079
54	3,374	2,249
61	2,625	1,750
66	2,484	1,656
69	2,342	1,561
70	2,200	1,467

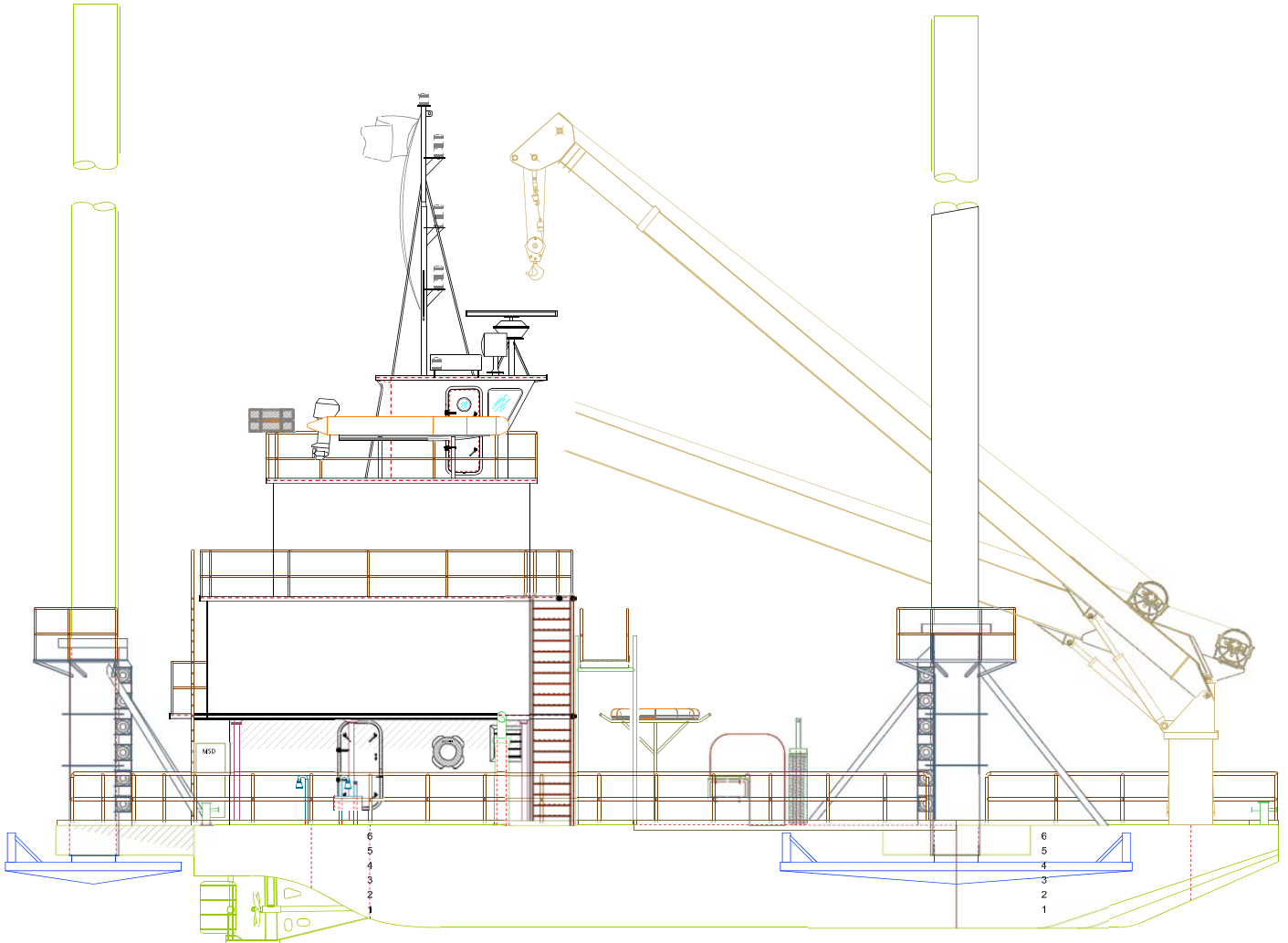
\*CURRENT CONFIGURATION IS FOR 8 TONS

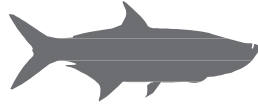


<b>ALASKAN 25 TON CRANE</b>		
<b>MCT 2570</b>		
<b>70 FT TELESCOPIC BOOM</b>		
<b>MAXIMUM SAFE WORKING LOAD</b>		
<b>50 FT BOOM RETRACTED</b>		
<b>BOOM RADIUS (ft)</b>	<b>ONBOARD LOAD (lbs.)</b>	<b>OFFBOARD LOAD (lbs.)</b>
10.10	51,019	34,013
13.40	35,349	23,566
25.20	18,928	12,619
36.10	12,943	8,629
44.00	9,487	6,325
48.60	7,950	5,300
50.00	4,772	3,181
<b>FAST LINE RATED FOR 3,181 LBS AT ALL RADII</b>		
<b>70 FT BOOM EXTENDED</b>		
<b>BOOM RADIUS (ft)</b>	<b>ONBOARD LOAD (lbs.)</b>	<b>OFFBOARD LOAD (lbs.)</b>
14.83	28,672	19,115
18.71	23,805	15,870
34.76	12,080	8,053
49.81	7,802	5,201
60.72	5,345	3,563
67.87	3,538	2,359
70.00	1,968	1,312
<b>FAST LINE RATED FOR 1,312 LBS AT ALL RADII</b>		



## Outboard Profile

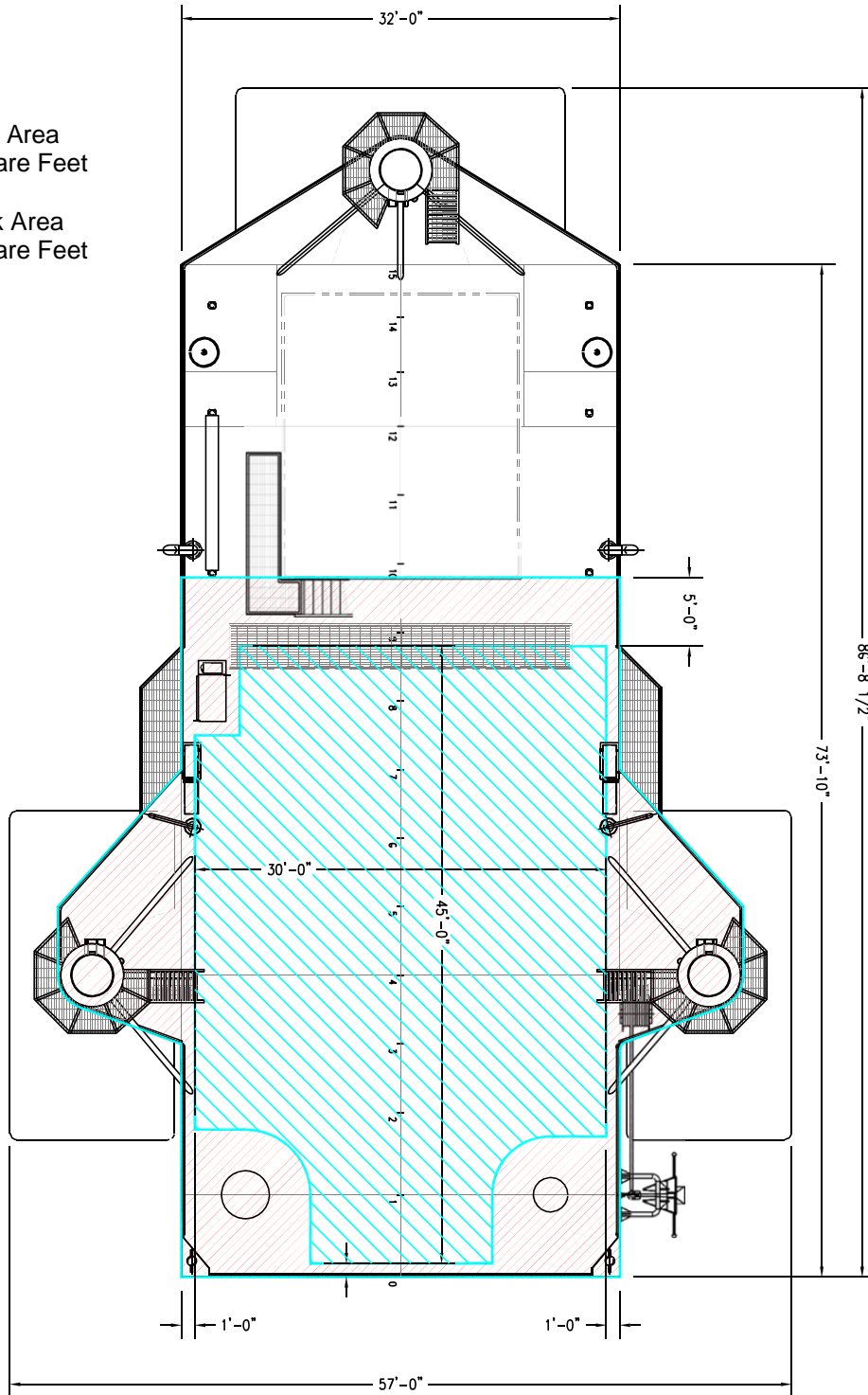


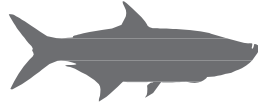


**Open Deck Area**

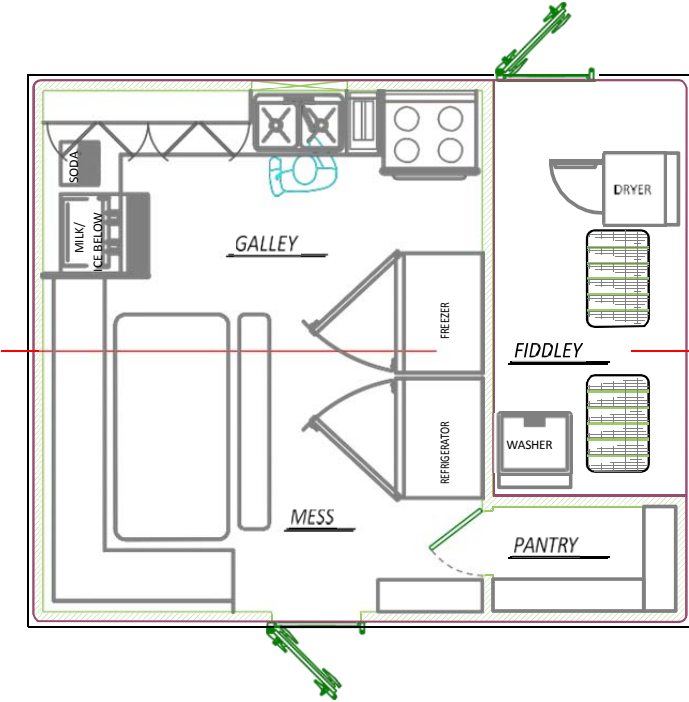
Total Deck Area  
1,872 Square Feet

Clear Deck Area  
1,179 Square Feet

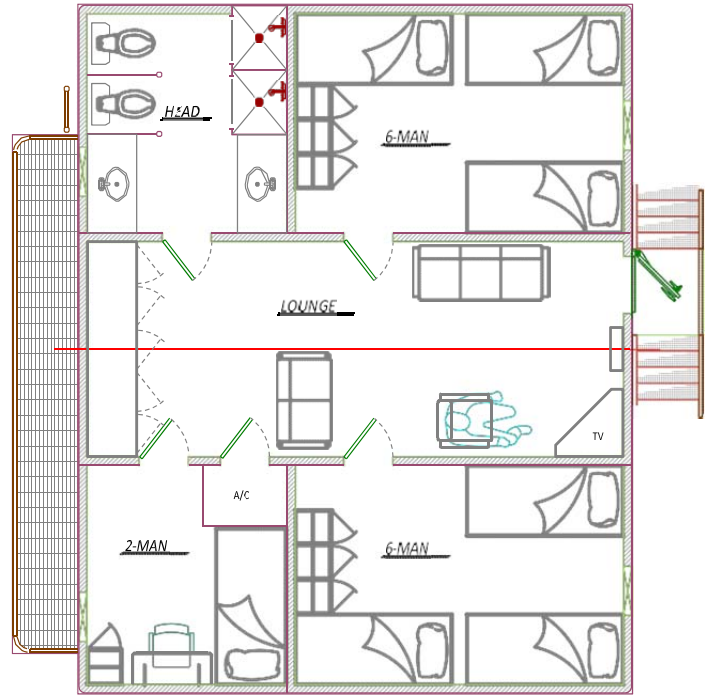




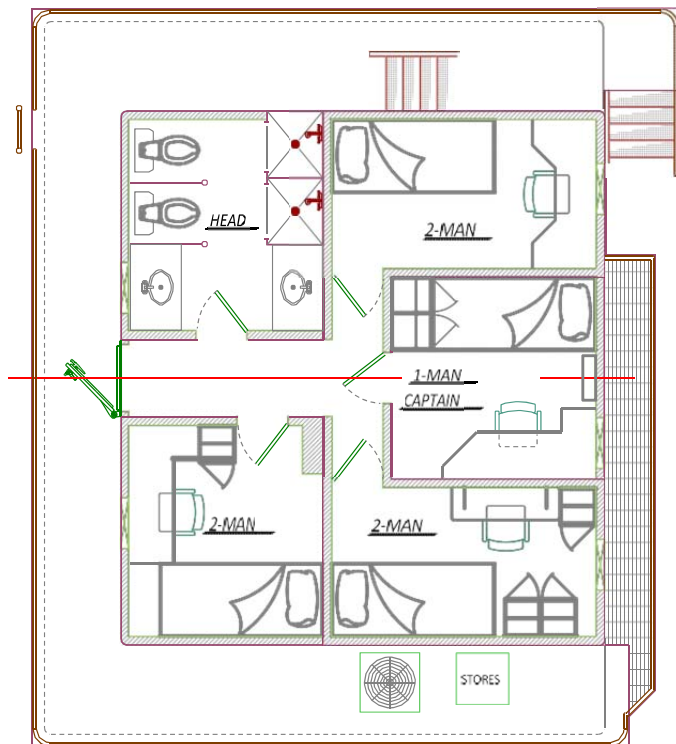
## Main Deck Quarters



## 01 Level Quarters



## 02 Level Quarters



## Pilothouse

