



## Overview

### LEG

Leg Length	130 ft
Leg Diameter (Od)	42 in
Leg Tower Height	13 ft

### HULL

Length (Overall)	93.5 ft
Length (Barge Only)	81 ft
Beam (Overall)	63 ft
Beam (Barge Only)	38 ft
Hull Depth	8 ft

### PAD

Length	24 ft
Width	12 ft
Depth	2 ft
Bearing Load	3,000 lbs/ft <sup>2</sup>
Design	4-Way Slope

### CRANE

	Port	Starboard
Load Rating	40 ton	10 ton
Make	Nautilus	Nautilus
Model	180BT-40/70	35B4-50
Boom Type	Telescopic	Fixed
Boom Length	70 ft	50 ft
Crane Inst. Type	Deck Mount	Deck Mount

### PROPULSION

Mains - Make	GM
Mains - Model	12V71
Horsepower	800 hp
Bow Thruster Equipped	No
Clutch Make/Reduction	Twin Disc 4:1
Consumption/Engine-Full	19.4 gph
Consumption/Engine-Half	9.7 gph

### GENERATORS

Generator Engine Make	GM
Generator Engine Model	4-71
Generator Output	75 kw
Consumption/Gen	6.4 gph

### DECK

Total Deck Area	2,362 ft <sup>2</sup>
Clear Deck Area	1,411 ft <sup>2</sup>
Additional Clear Area	N/A
Maximum Deck Load	150,000

### CAPACITIES

Diesel Fuel	4,828 usg
Lube	150 usg
Hydraulic Oil	1,289 usg
Potable Water	9,786 usg
Watermaker Equipped	No

### ELECTRONIC AIDS & COMMUNICATION

Compass	Fully Equipped
Gps/Dgps	Fully Equipped
Radar(s)	Fully Equipped
Fathometer	Fully Equipped
Loudhailer	Fully Equipped
Satellite Phone	Fully Equipped
VHF Radio	Fully Equipped
Single Sideband Radio	Fully Equipped
EPIRB	Fully Equipped
GMDSS	No

### PERSONNEL ACCOMMODATIONS

Total Accommodations	29
VIP Accommodations	2
Galley & Dining	Fully Equipped
TV Lounge	Fully Equipped
Laundry Facility	Fully Equipped
Air Condition / Heater	Std Central Units

### PERFORMANCE

Estimated Speed	5 knots
Max Sep – Pad to Deck	114 ft
Max Working Water Depth	70 ft
Min Working Water Depth	7 ft

### DOCUMENTATION

Class	None
Flag/ Port of Registry	USA / New Orleans, LA
USCG	Inspected
SOLAS	No
Official Number	902606
IMO	8767537
Call Sign	WDH5373
Year Built	1986
Builder	Blue Streak
Registered Tonnage	195
International Tonnage	132



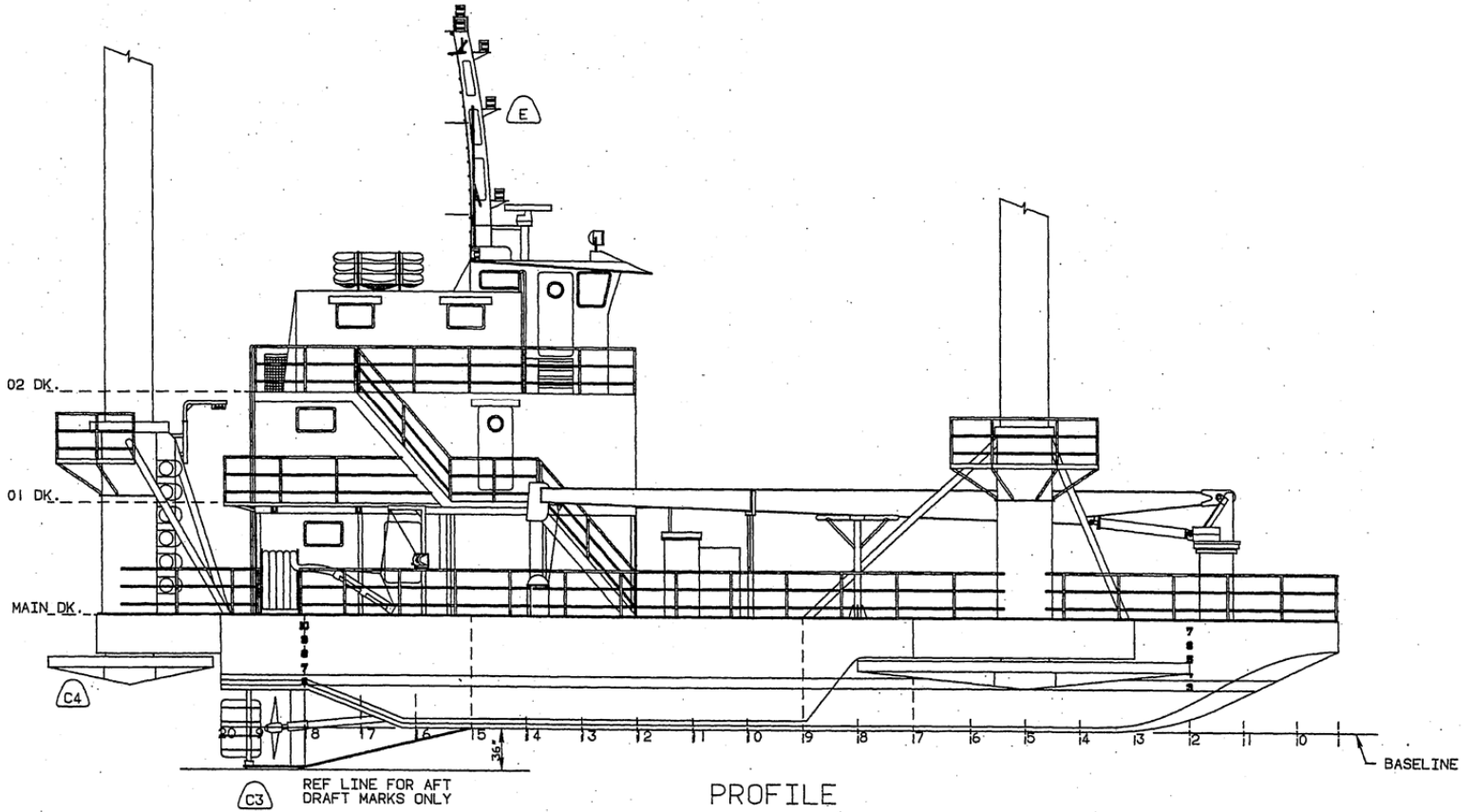
<b>NAUTILUS 40 TON CRANE*</b>		
<b>180BT-40/70</b>		
<b>70 FT TELESCOPIC BOOM</b>		
<b>MAXIMUM SAFE WORKING LOAD</b>		
<b>40 FT BOOM RETRACTED</b>		
<b>BOOM RADIUS (ft)</b>	<b>ONBOARD LOAD (lbs.)</b>	<b>OFFBOARD LOAD (lbs.)</b>
5	61,600	51,933
10	61,600	51,933
15	61,600	51,933
20	61,600	43,241
25	55,414	36,476
30	47,024	30,883
35	39,756	26,037
40	30,655	19,970
<b>FAST LINE RATED FOR 8,864 AT ALL RADII</b>		
<b>70 FT BOOM EXTENDED</b>		
<b>BOOM RADIUS (ft)</b>	<b>ONBOARD LOAD (lbs.)</b>	<b>OFFBOARD LOAD (lbs.)</b>
10	53,600	35,267
15	53,600	35,267
20	52,180	34,320
25	41,916	27,477
30	34,833	22,755
35	29,651	19,301
40	25,695	16,663
45	22,577	14,585
50	20,057	12,905
55	17,979	11,519
60	16,238	10,359
65	14,763	9,375
70	13,548	8,565
<b>FAST LINE RATED FOR 8,864 AT ALL RADII</b>		
<b>*CURRENT CONFIGURATION IS FOR 30 TONS</b>		



<b>NAUTILUS 10 TON CRANE</b>		
<b>35B4-50</b>		
<b>50 FT FIXED BOOM</b>		
<b>MAXIMUM SAFE WORKING LOAD</b>		
<b>BOOM RADIUS (ft)</b>	<b>ONBOARD LOAD (lbs.)</b>	<b>OFFBOARD LOAD (lbs.)</b>
9	20,885	16,917
10	20,885	16,610
15	20,885	15,185
20	17,357	11,471
25	13,606	8,971
30	11,135	7,323
35	9,383	6,155
40	8,077	5,285
45	7,065	4,610
50	5,475	3,550



## Outboard Profile

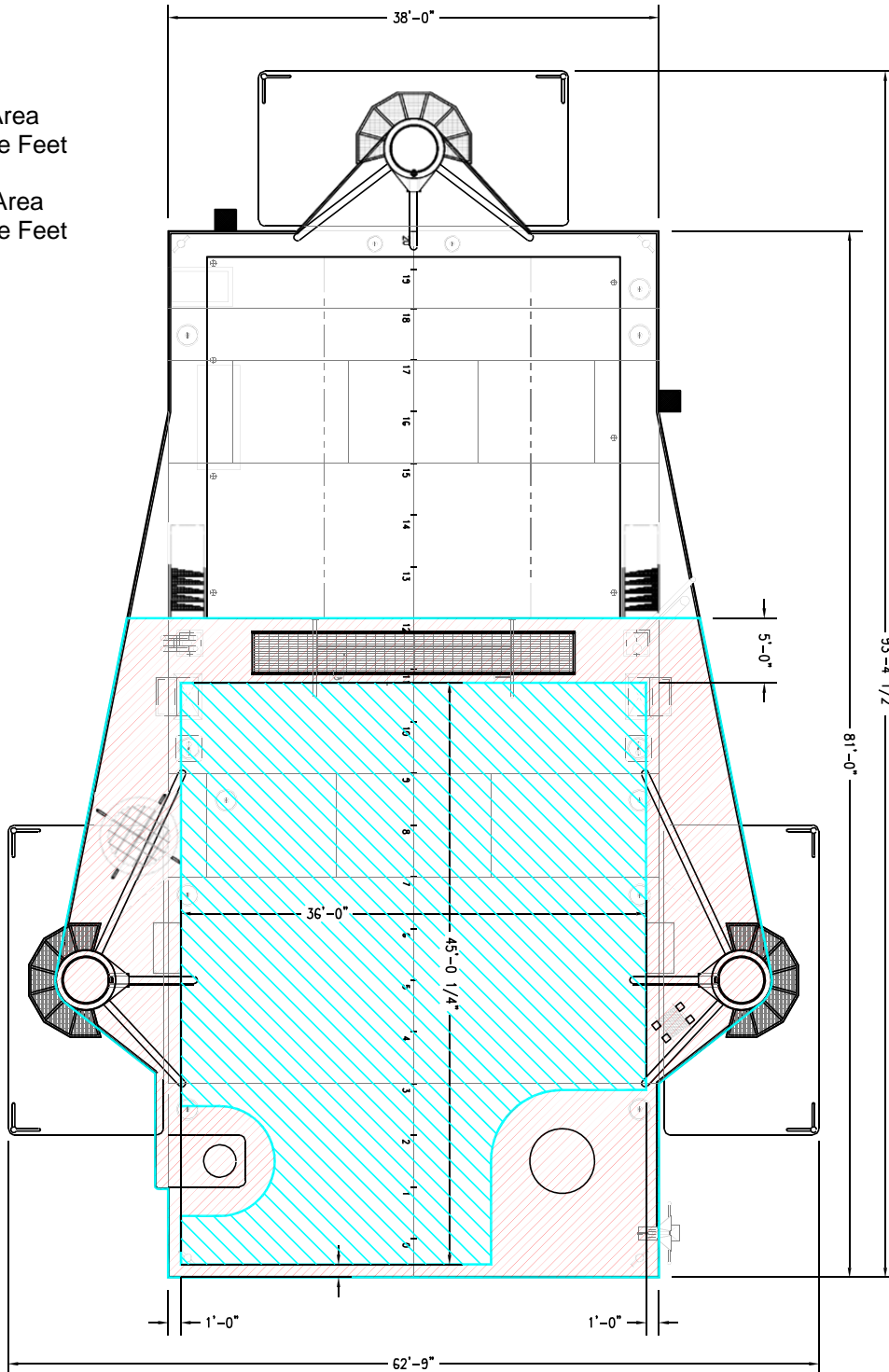




### Open Deck Area

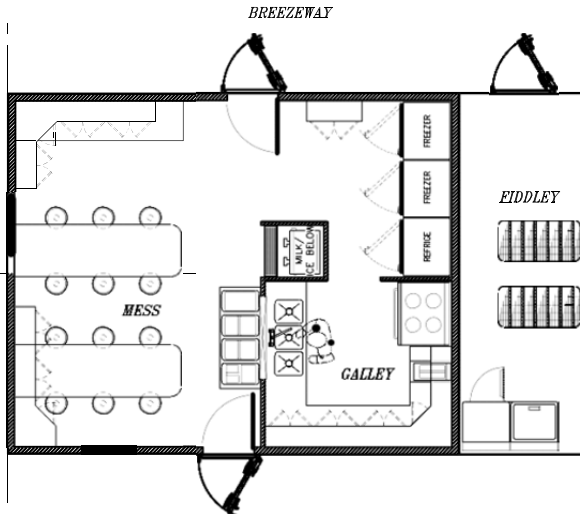
Total Deck Area  
2,362 Square Feet

Clear Deck Area  
1,411 Square Feet





## Main Deck Quarters



## 01 Level Quarters



## Pilothouse

