



Overview

LEG

Leg Length	105 ft
Leg Diameter (Od)	36 in
Leg Tower Height	13.5 ft

HULL

Length (Overall)	86.5 ft
Length (Barge Only)	74 ft
Beam (Overall)	57 ft
Beam (Barge Only)	32 ft
Hull Depth	7 ft

PAD

Length	24 ft
Width	12 ft
Depth	1.5 ft
Bearing Load	3,000 lbs/ft ²
Design	2-Way Slope

CRANE

	Port	Starboard
Load Rating	15 ton	3 ton
Make	OECO	Crown
Model	99C02	30-50
Boom Type	Telescopic	Telescopic
Boom Length	70 ft	45 ft
Crane Inst. Type	Deck Mount	Deck Mount

PROPULSION

Mains - Make	GM
Mains - Model	12V71
Horsepower	800 hp
Bow Thruster Equipped	No
Clutch Make/Reduction	Twin Disc 2:1
Consumption/Engine-Full	19.4 gph
Consumption/Engine-Half	9.7 gph

GENERATORS

Generator Engine Make	GM
Generator Engine Model	4-71
Generator Output	50 kw
Consumption/Gen	6.4 gph

DECK

Total Deck Area	1,751 ft ²
Clear Deck Area	1,187 ft ²
Additional Clear Area	N/A
Maximum Deck Load	110,000

CAPACITIES

Diesel Fuel	2,230 usg
Lube	180 usg
Hydraulic Oil	718 usg
Potable Water	2,874 usg
Watermaker Equipped	No

ELECTRONIC AIDS & COMMUNICATION

Compass	Fully Equipped
Gps/Dgps	Fully Equipped
Radar(s)	Fully Equipped
Fathometer	Fully Equipped
Loudhailer	Fully Equipped
Satellite Phone	Fully Equipped
VHF Radio	Fully Equipped
Single Sideband Radio	Fully Equipped
EPIRB	Fully Equipped
GMDSS	No

PERSONNEL ACCOMMODATIONS

Total Accommodations	21
VIP Accommodations	2
Galley & Dining	Fully Equipped
TV Lounge	Fully Equipped
Laundry Facility	Fully Equipped
Air Condition / Heater	Std Central Units

PERFORMANCE

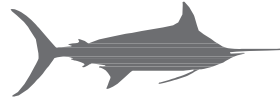
Estimated Speed	6 knots
Max Sep – Pad to Deck	93 ft
Max Working Water Depth	70 ft
Min Working Water Depth	6 ft

DOCUMENTATION

Class	None
Flag/ Port of Registry	USA / New Orleans, LA
USCG	Inspected
SOLAS	No
Official Number	607271
IMO	7944657
Call Sign	WDH5158
Year Built	1979
Builder	Sun Contractors
Registered Tonnage	97
International Tonnage	None



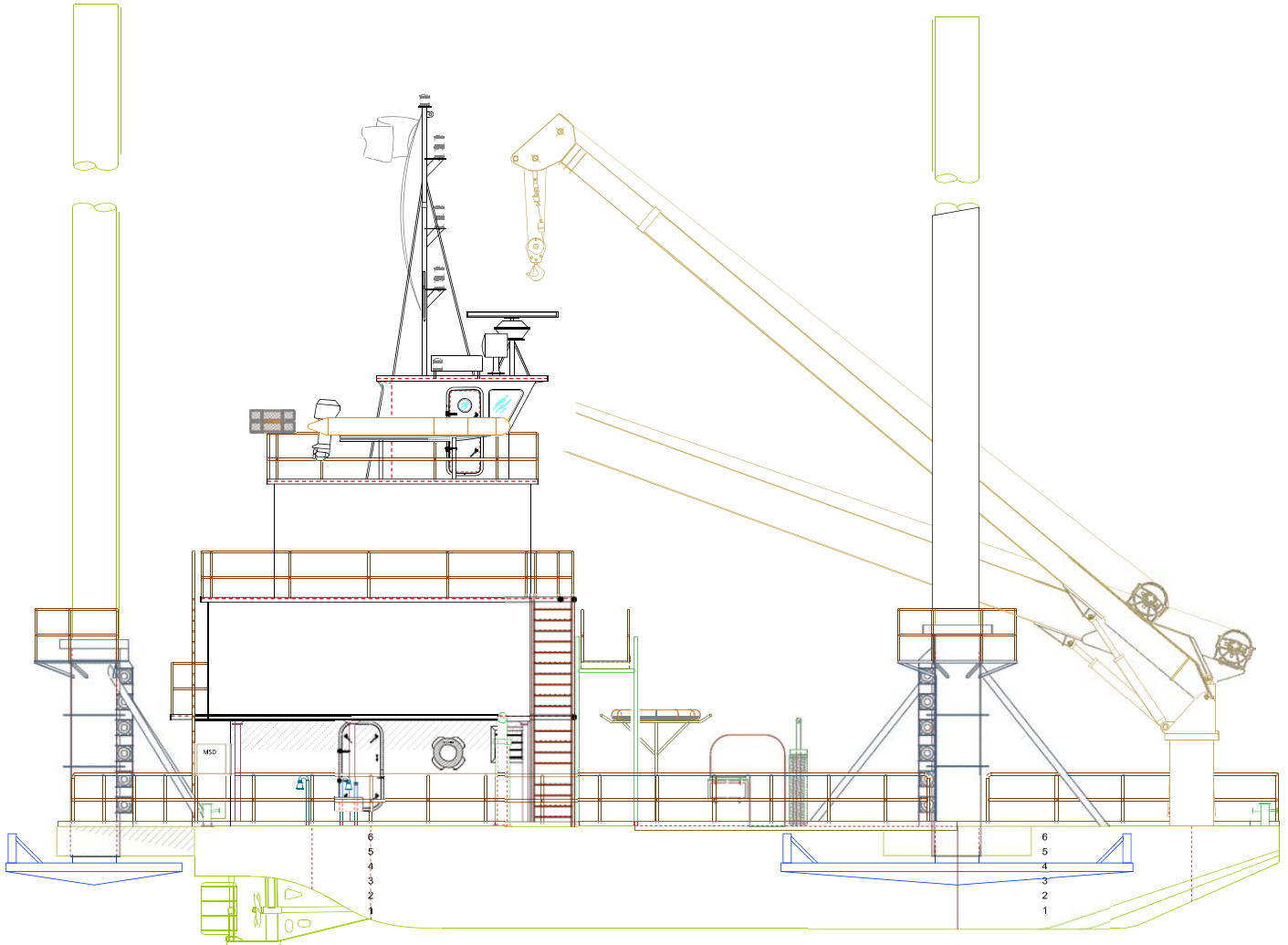
OECO 15 TON CRANE*		
99C02		
70 FT TELESCOPIC BOOM		
MAXIMUM SAFE WORKING LOAD		
50 FT RETRACTED		
BOOM RADIUS (ft)	ONBOARD LOAD (lbs.)	OFFBOARD LOAD (lbs.)
7	16,000	10,667
13	16,000	10,667
17	15,800	10,533
25	10,440	6,960
32	7,346	4,897
38	5,604	3,736
43	4,555	3,037
47	3,925	2,617
49	3,586	2,391
50	3,478	2,319
70 FT BOOM EXTENDED		
BOOM RADIUS (ft)	ONBOARD LOAD (lbs.)	OFFBOARD LOAD (lbs.)
10	16,000	10,667
18	12,000	8,000
24	9,800	6,533
35	6,828	4,552
45	4,619	3,079
54	3,374	2,249
61	2,625	1,750
66	2,484	1,656
69	2,342	1,561
70	2,200	1,467
*CURRENT CONFIGURATION IS FOR 8 TONS		



CROWN 3 TON CRANE		
30-50 45 FT TELESCOPIC BOOM MAXIMUM SAFE WORKING LOAD		
26.5 FT RETRACTED		
BOOM RADIUS (ft)	ONBOARD LOAD	OFFBOARD LOAD (lbs.)
3.0	6,000	4,000
6.0	6,000	4,000
5.5	6,000	4,000
9.5	6,000	4,000
13.5	6,000	4,000
17.0	6,000	4,000
20.0	6,000	4,000
23.0	6,000	4,000
25.0	6,000	4,000
26.0	4,000	2,600
26.5	3,000	2,000
45 FT BOOM EXTENDED		
BOOM RADIUS (ft)	ONBOARD LOAD (lbs.)	OFFBOARD LOAD (lbs.)
3.0	6,000	4,000
6.0	6,000	4,000
8.5	6,000	4,000
15.0	6,000	4,000
23.0	6,000	4,000
29.5	6,000	4,000
35	6,000	4,000
39.5	6,000	4,000
43.0	6,000	4,000
44.5	4,000	2,600
45.0	3,000	2,000



Outboard Profile

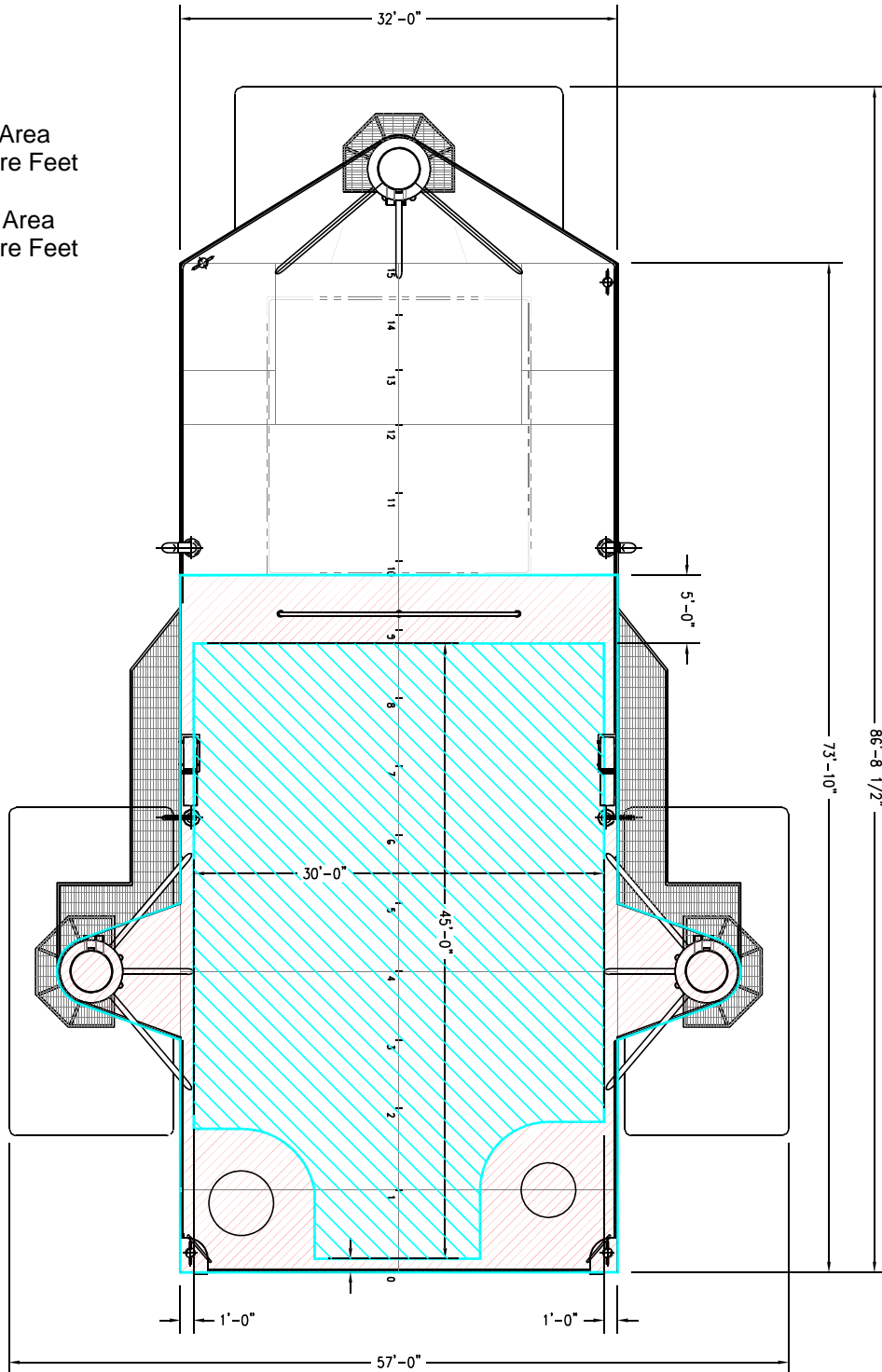




Open Deck Area

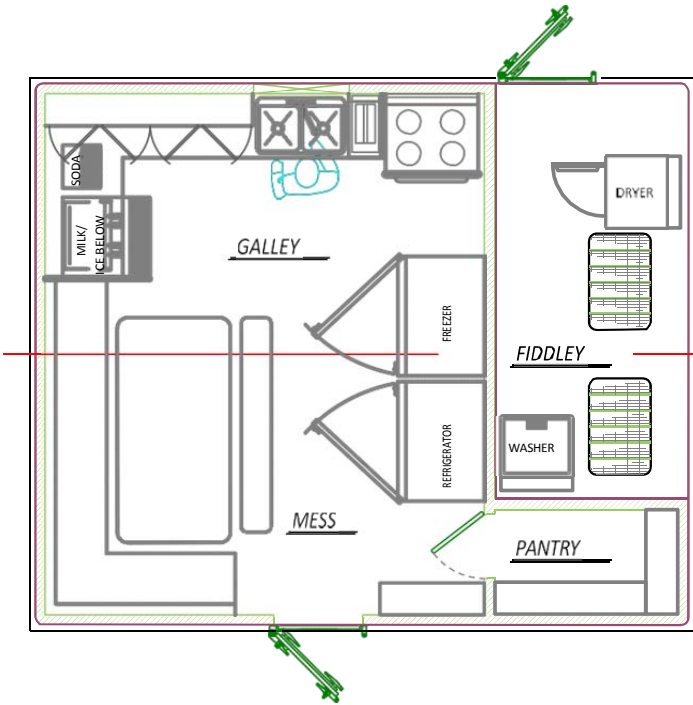
Total Deck Area
1,751 Square Feet

Clear Deck Area
1,187 Square Feet

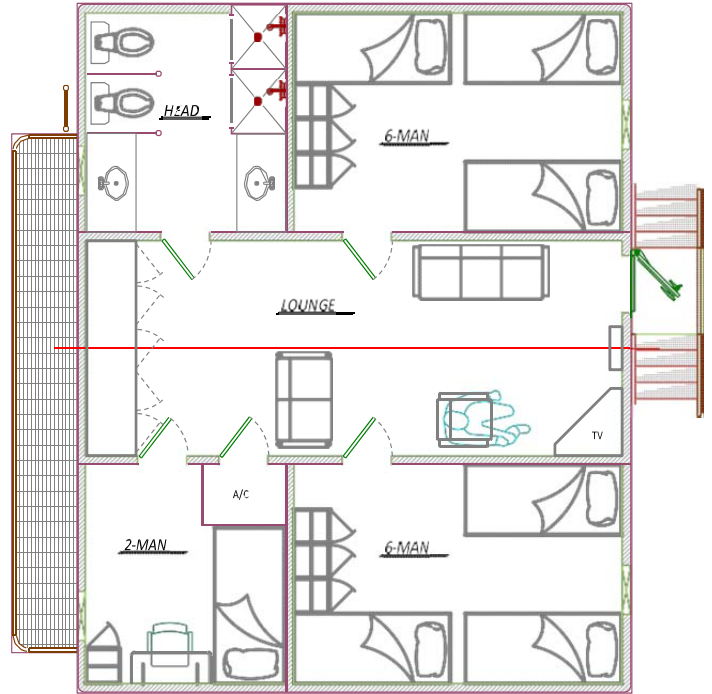




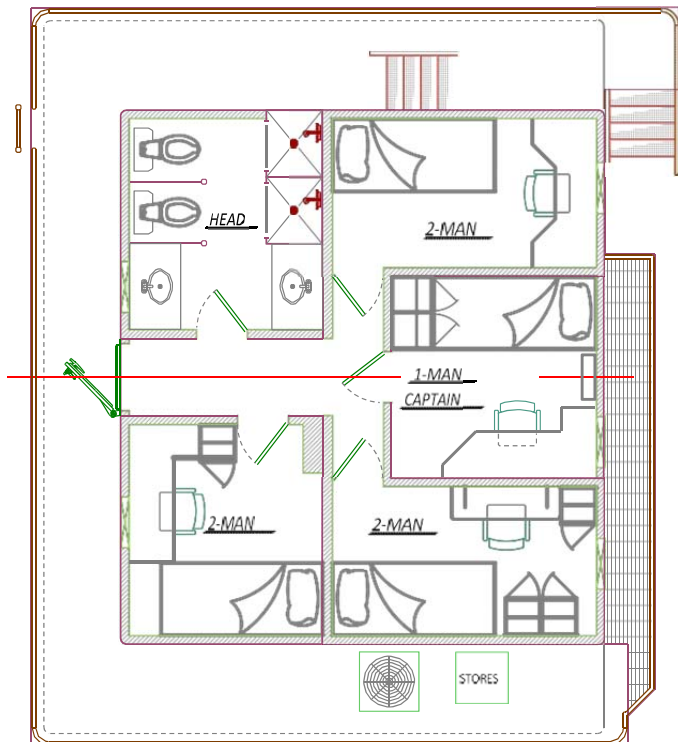
Main Deck Quarters



01 Level Quarters



02 Level Quarters



Pilothouse

