



Overview

LEG

Leg Length	120 ft
Leg Diameter (Od)	36 in
Leg Tower Height	12 ft

HULL

Length (Overall)	86.5 ft
Length (Barge Only)	74 ft
Beam (Overall)	57 ft
Beam (Barge Only)	50 ft
Hull Depth	7 ft

PAD

Length	24 ft
Width	12 ft
Depth	1.5 ft
Bearing Load	3,000 lbs/ft ²
Design	2-Way Slope

CRANE

	Port	Starboard
Load Rating	25 ton	12.5 ton
Make	Alaskan	Nautilus
Model	MCT 2570	12-5-3-70
Boom Type	Telescopic	Telescopic
Boom Length	70 ft	70 ft
Crane Inst. Type	Deck Mount	Deck Mount

PROPULSION

Mains - Make	GM
Mains - Model	12V71
Horsepower	800 hp
Bow Thruster Equipped	No
Clutch Make/Reduction	Twin Disc 2:1
Consumption/Engine-Full	19.4 gph
Consumption/Engine-Half	9.7 gph

GENERATORS

Generator Engine Make	GM
Generator Engine Model	3-71
Generator Output	80 kw
Consumption/Gen	6.4 gph

DECK

Total Deck Area	2,117 ft ²
Clear Deck Area	1,193 ft ²
Additional Clear Area	N/A
Maximum Deck Load	150,000

CAPACITIES

Diesel Fuel	3,304 usg
Lube	84 usg
Hydraulic Oil	958 usg
Potable Water	2,874 usg
Watermaker Equipped	No

ELECTRONIC AIDS & COMMUNICATION

Compass	Fully Equipped
Gps/Dgps	Fully Equipped
Radar(s)	Fully Equipped
Fathometer	Fully Equipped
Loudhailer	Fully Equipped
Satellite Phone	Fully Equipped
VHF Radio	Fully Equipped
Single Sideband Radio	Fully Equipped
EPIRB	Fully Equipped
GMDSS	No

PERSONNEL ACCOMMODATIONS

Total Accommodations	21
VIP Accommodations	2
Galley & Dining	Fully Equipped
TV Lounge	Fully Equipped
Laundry Facility	Fully Equipped
Air Condition / Heater	Std Central Units

PERFORMANCE

Estimated Speed	5 knots
Max Sep – Pad to Deck	106 ft
Max Working Water Depth	80 ft
Min Working Water Depth	6 ft

DOCUMENTATION

Class	None
Flag/ Port of Registry	USA / New Orleans, LA
USCG	Inspected
SOLAS	No
Official Number	609642
IMO	7947661
Call Sign	WDH5317
Year Built	1979
Builder	Sun Contractors
Registered Tonnage	97
International Tonnage	None



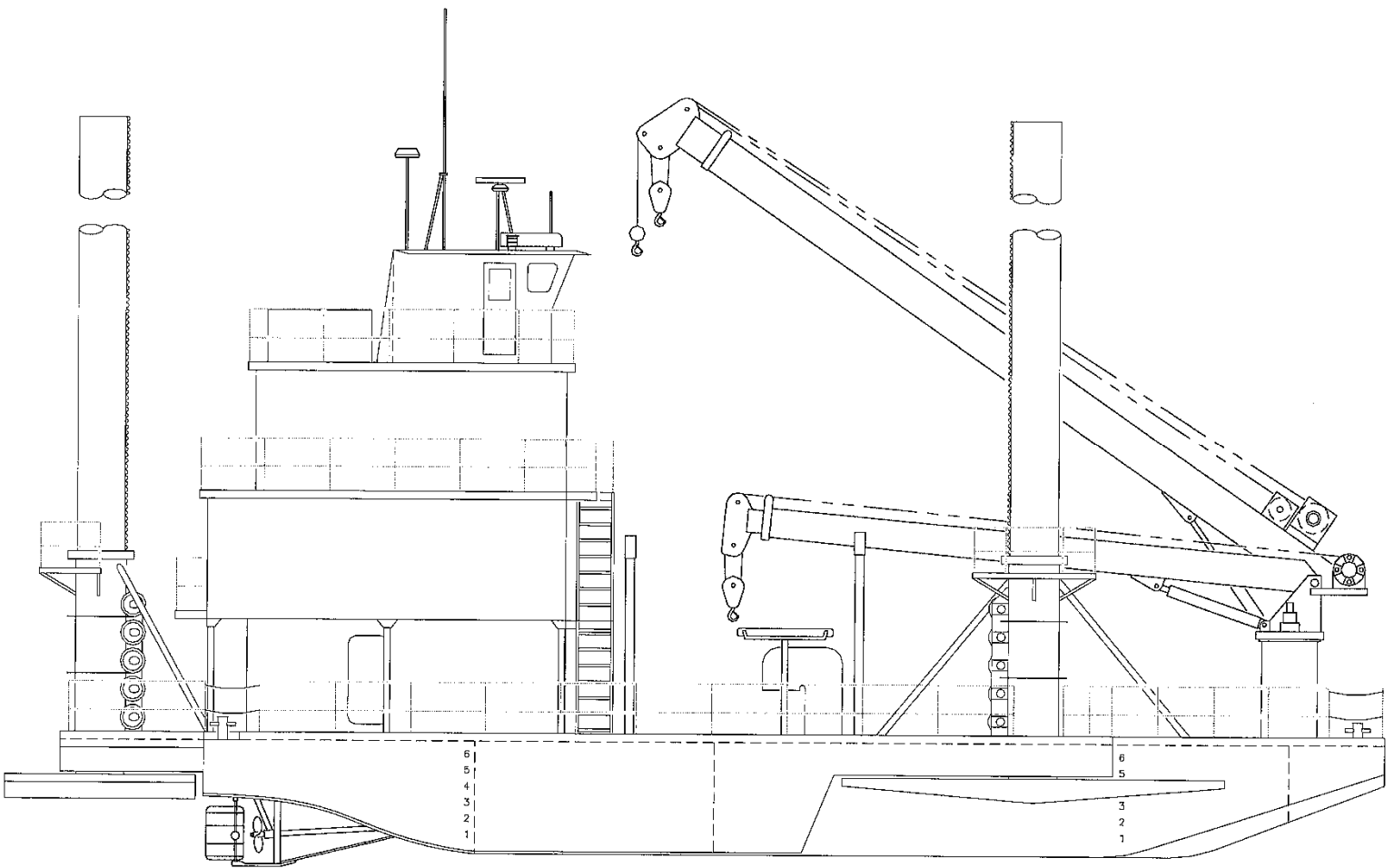
ALASKAN 25 TON CRANE		
MCT 2570		
70 FT TELESCOPIC BOOM		
MAXIMUM SAFE WORKING LOAD		
50 FT BOOM RETRACTED		
BOOM RADIUS (ft)	ONBOARD LOAD (lbs.)	OFFBOARD LOAD (lbs.)
10.10	51,019	34,013
13.40	35,349	23,566
25.20	18,928	12,619
36.10	12,943	8,629
44.00	9,487	6,325
48.60	7,950	5,300
50.00	4,772	3,181
FAST LINE RATED FOR 3,181 LBS AT ALL RADII		
70 FT BOOM EXTENDED		
BOOM RADIUS (ft)	ONBOARD LOAD (lbs.)	OFFBOARD LOAD (lbs.)
14.83	28,672	19,115
18.71	23,305	15,870
34.76	12,080	8,053
49.81	7,802	5,201
60.72	5,345	3,563
67.87	3,538	2,359
70.00	1,968	1,312
FAST LINE RATED FOR 3,181 LBS UP TO 60 FT		



NAUTILUS 12.5 TON CRANE		
12-5-3-70		
70 FT TELESCOPIC BOOM		
MAXIMUM SAFE WORKING LOAD		
30 FT BOOM RETRACTED		
BOOM RADIUS (ft)	ONBOARD LOAD (lbs.)	OFFBOARD LOAD (lbs.)
10	6,000	4,000
15	6,000	4,000
20	6,000	4,000
25	6,000	4,000
30	6,000	4,000
70 FT BOOM EXTENDED		
BOOM RADIUS (ft)	ONBOARD LOAD (lbs.)	OFFBOARD LOAD (lbs.)
10	6,000	4,000
15	6,000	4,000
20	6,000	4,000
25	6,000	4,000
30	6,000	4,000
35	6,000	4,000
40	6,000	4,000
45	6,000	4,000
50	6,000	4,000
55	6,000	4,000
60	4,000	2,600
70	3,000	2,000
*CURRENT CONFIGURATION IS FOR 3 TONS		



Outboard Profile

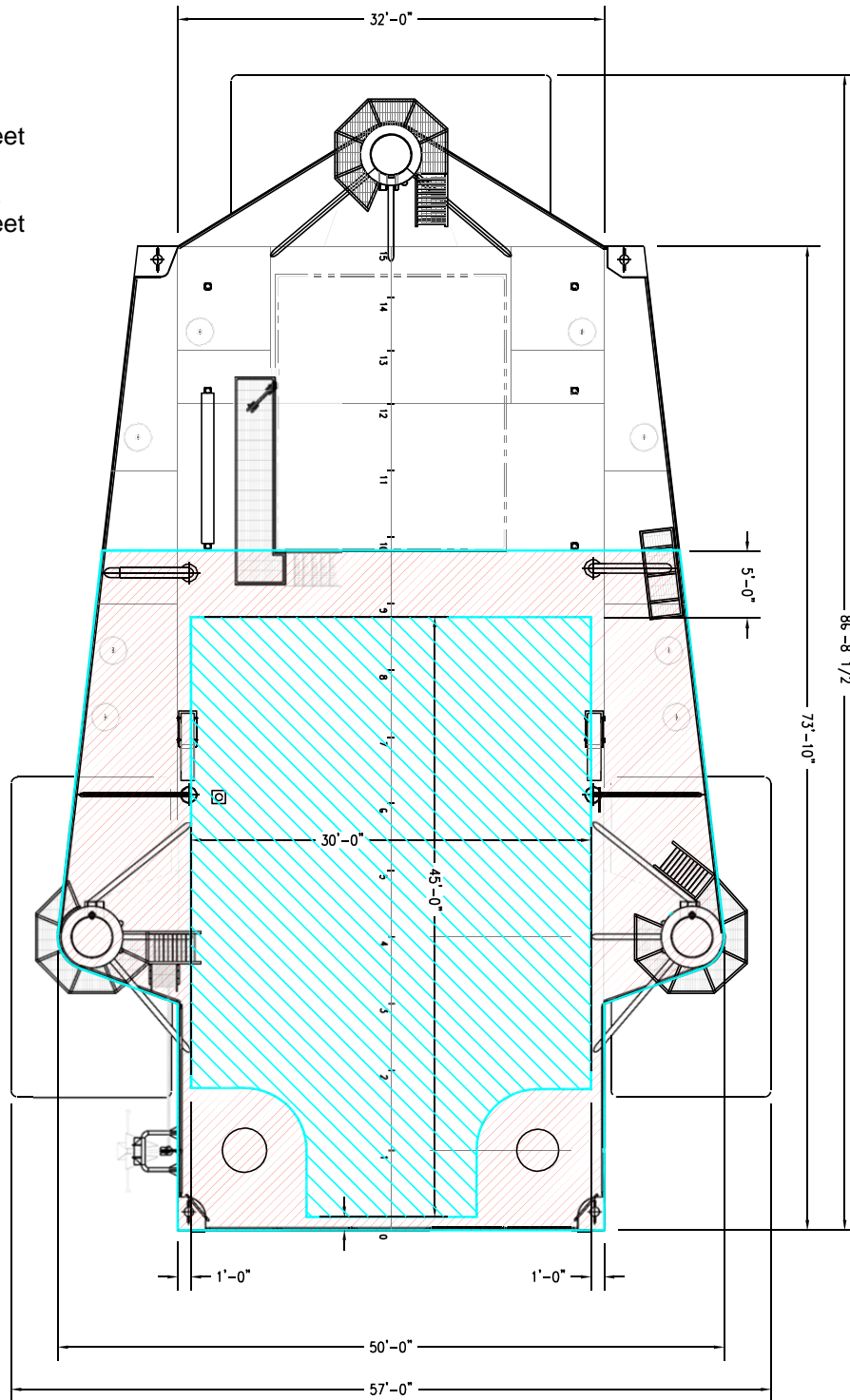




Open Deck Area

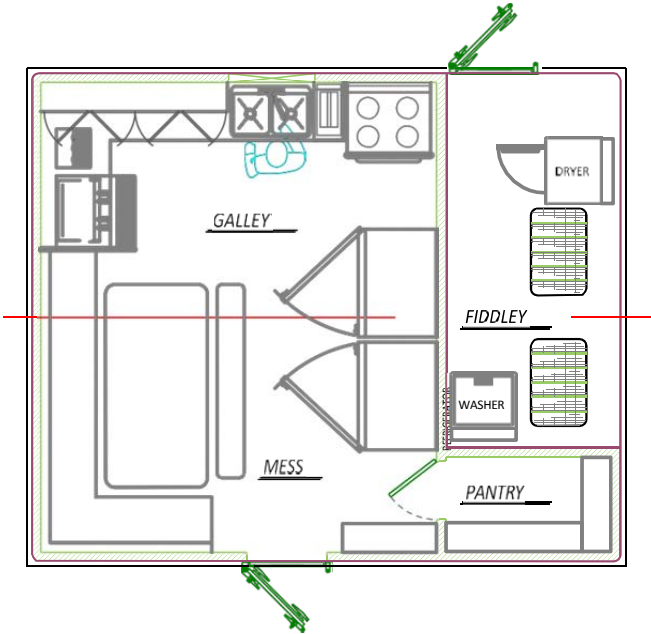
Total Deck Area
2,117 Square Feet

Clear Deck Area
1,193 Square Feet

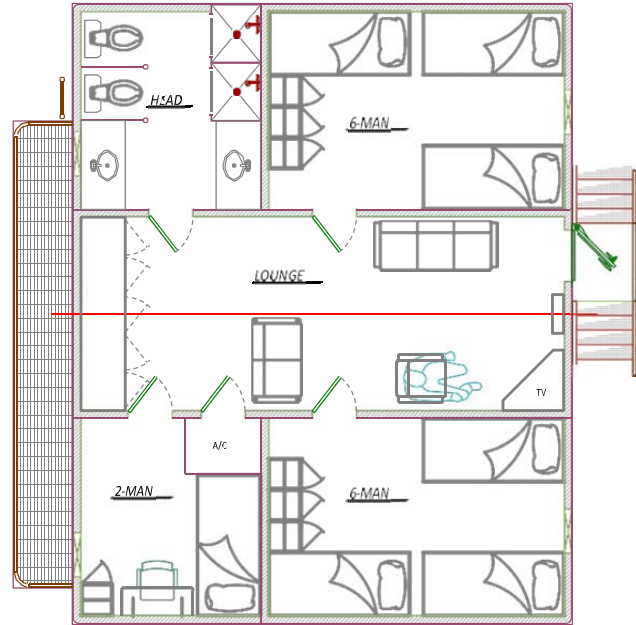




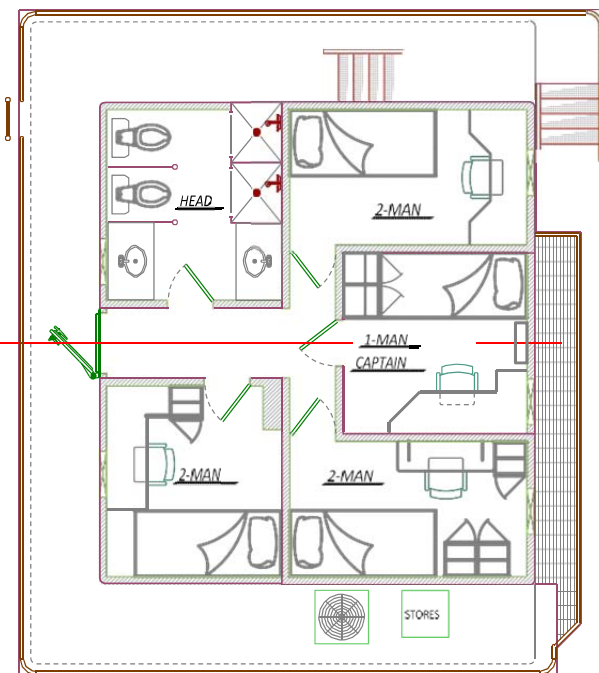
Main Deck Quarters



01 Level Quarters



02 Level Quarters



Pilothouse

