

Overview

LEG

Leg Length	120 ft
Leg Diameter (Od)	36 in
Leg Tower Height	9 ft

HULL

Length (Overall)	76.5 ft
Length (Barge Only)	64 ft
Beam (Overall)	57 ft
Beam (Barge Only)	32 ft
Hull Depth	7 ft

PAD

Length	24 ft
Width	12 ft
Depth	2 ft
Bearing Load	N/A
Design	2-Way Slope

CRANE

	Port	Starboard
Load Rating	25 ton	10 ton
Make	Nautilus	EBI
Model	4000	C20-60
Boom Type	Telescopic	Fixed
Boom Length	80 ft	60 ft
Crane Inst. Type	Deck Mount	Deck Mount

PROPULSION

Mains - Make	GM
Mains - Model	12V71
Horsepower	800 hp
Bow Thruster Equipped	No
Clutch Make/Reduction	Twin Disc 3:1
Consumption/Engine-Full	19.4 gph
Consumption/Engine-Half	9.7 gph

GENERATORS

Generator Engine Make	GM
Generator Engine Model	4-71
Generator Output	50 kw
Consumption/Gen	5.0 gph

DECK

Total Deck Area	1,963 ft ²
Clear Deck Area	957 ft ²
Additional Clear Area	N/A
Maximum Deck Load	110,000

CAPACITIES

Diesel Fuel	2,396 usg
Lube	147 usg
Hydraulic Oil	1,026 usg
Potable Water	4,587 usg
Watermaker Equipped	No

ELECTRONIC AIDS & COMMUNICATION

Compass	Fully Equipped
Gps/Dgps	Fully Equipped
Radar(s)	Fully Equipped
Fathometer	Fully Equipped
Loudhailer	Fully Equipped
Satellite Phone	Fully Equipped
VHF Radio	Fully Equipped
Single Sideband Radio	Fully Equipped
EPIRB	Fully Equipped
GMDSS	No

PERSONNEL ACCOMMODATIONS

Total Accommodations	17
VIP Accommodations	1
Galley & Dining	Fully Equipped
TV Lounge	Fully Equipped
Laundry Facility	Fully Equipped
Air Condition / Heater	Std Central Units

PERFORMANCE

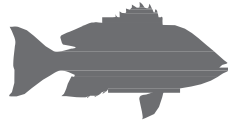
Estimated Speed	6 knots
Max Sep – Pad to Deck	104 ft
Max Working Water Depth	80 ft
Min Working Water Depth	6.5 ft

DOCUMENTATION

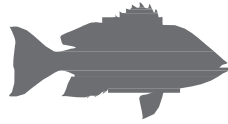
Class	None
Flag/ Port of Registry	USA / New Orleans, LA
USCG	Inspected
SOLAS	No
Official Number	576299
IMO	8766131
Call Sign	WDH5368
Year Built	1976
Builder	Sun Contractors
Registered Tonnage	97
International Tonnage	None



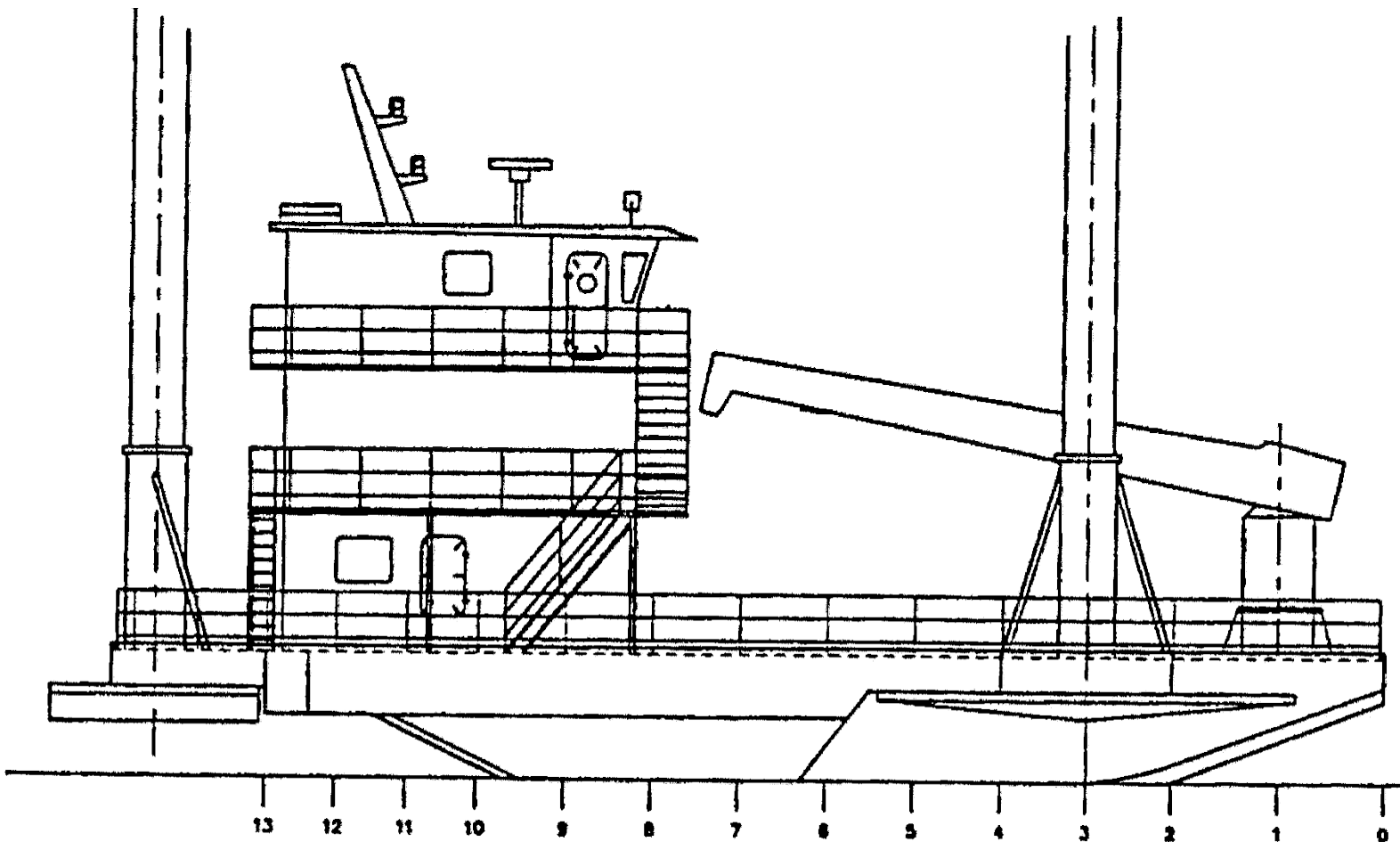
NAUTILUS 25 TON CRANE		
4000		
80 FT TELESCOPIC BOOM		
MAXIMUM SAFE WORKING LOAD		
60 FT BOOM RETRACTED		
BOOM RADIUS (ft)	ONBOARD LOAD (lbs.)	OFFBOARD LOAD (lbs.)
10	38,140	25,439
15	38,140	25,439
20	32,000	21,300
25	24,000	16,000
30	21,330	14,227
35	18,000	12,000
40	16,500	11,000
45	14,500	9,600
50	12,000	8,000
60	5,960	3,975
FAST LINE RATED FOR 2,600 LBS AT ALL RADII		
80 FT BOOM EXTENDED		
BOOM RADIUS (ft)	ONBOARD LOAD (lbs.)	OFFBOARD LOAD (lbs.)
20	32,150	21,450
25	25,600	17,000
30	21,300	14,200
35	18,200	12,100
40	15,540	10,350
45	14,000	9,350
50	12,000	8,000
55	10,830	7,225
60	9,100	6,070
65	8,000	5,335
70	6,000	4,000
75	4,500	3,000
80	3,800	2,600
FAST LINE RATED FOR 2,600 LBS AT ALL RADII		



EBI 10 TON CRANE*		
C20B-50		
60 FT FIXED BOOM		
MAXIMUM SAFE WORKING LOAD		
BOOM RADIUS (ft)	ONBOARD LOAD (lbs.)	OFFBOARD LOAD (lbs.)
10	9,650	9,650
15	9,650	9,650
20	9,275	9,650
25	7,800	9,650
30	6,650	9,650
35	5,325	8,162
40	4,175	6,437
45	3,300	5,125
50	2,550	4,000
55	2,000	3,175
60	1,475	2,387
FAST LINE RATED FOR 4,900 LBS UP TO 35 FT		
*CURRENT CONFIGURATION IS FOR 5 TONS		



Outboard Profile

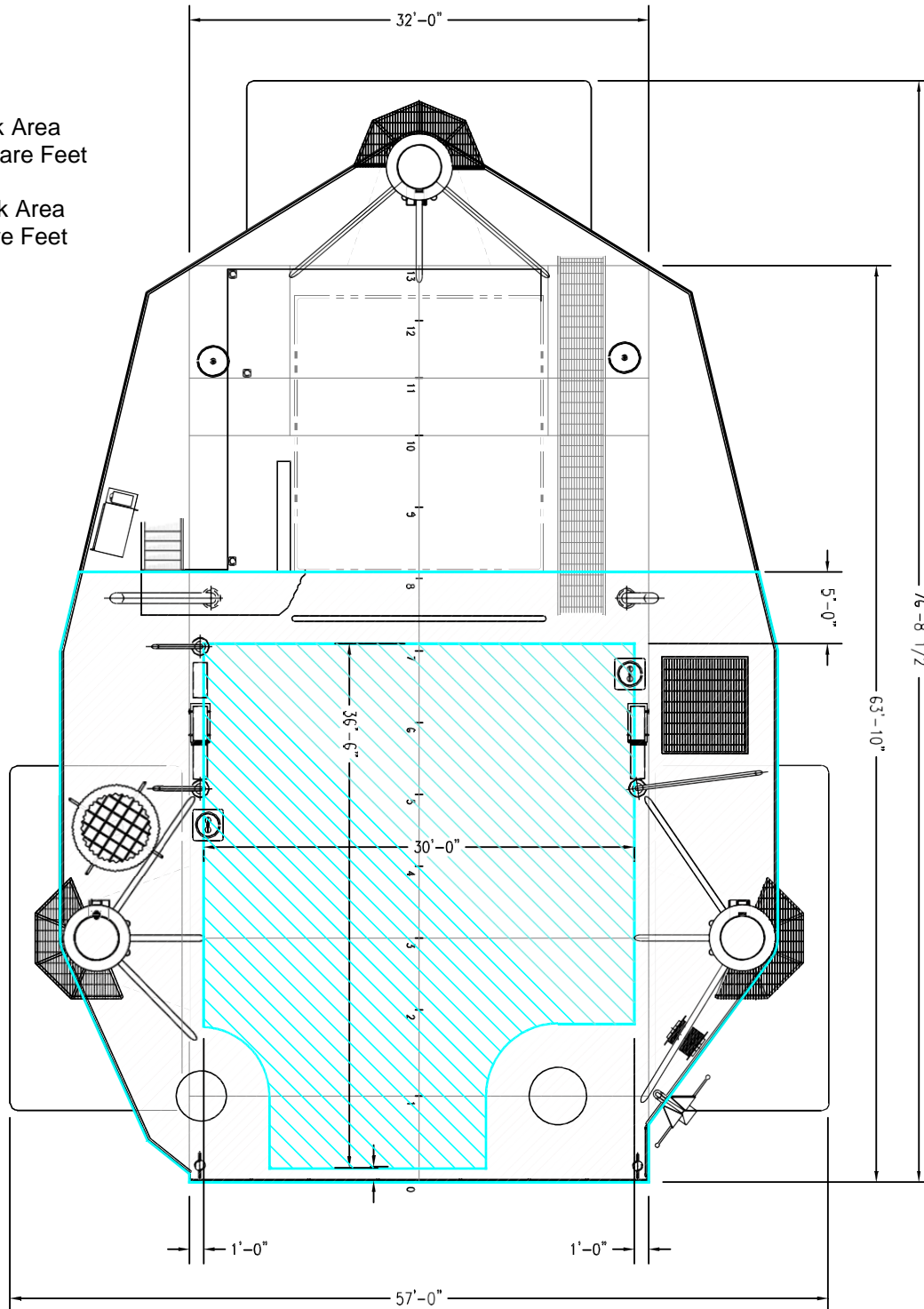


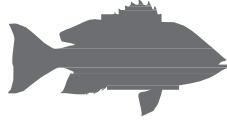


Open Deck Area

Total Deck Area
1,963 Square Feet

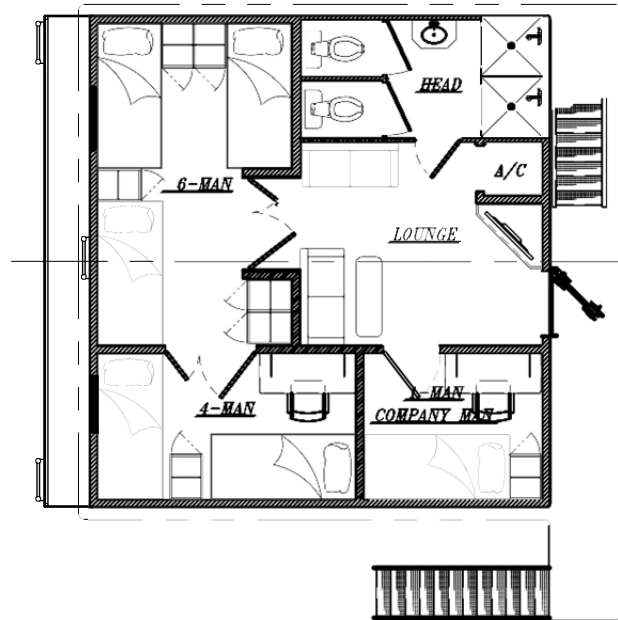
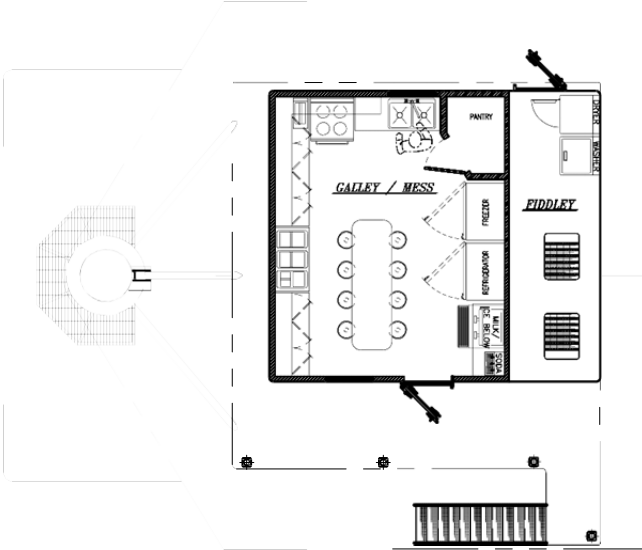
Clear Deck Area
957 Square Feet





Main Deck Quarters

01 Level Quarters



02 Level Quarters

