



Overview

LEG			CAPACITIES	
Leg Length	130 ft		Diesel Fuel	4,596 usg
Leg Diameter (Od)	42 in		Lube	200 usg
Leg Tower Height	15 ft		Hydraulic Oil	2,052 usg
			Potable Water	5,474 usg
			Watermaker Equipped	No
HULL			ELECTRONIC AIDS & COMMUNICATION	
Length (Overall)	87.5 ft		Compass	Fully Equipped
Length (Barge Only)	75 ft		Gps/Dgps	Fully Equipped
Beam (Overall)	61 ft		Radar(s)	Fully Equipped
Beam (Barge Only)	36 ft		Fathometer	Fully Equipped
Hull Depth	7 ft		Loudhailer	Fully Equipped
			Satellite Phone	Fully Equipped
			VHF Radio	Fully Equipped
			Single Sideband Radio	Fully Equipped
			EPIRB	Fully Equipped
			GMDSS	No
PAD			PERSONNEL ACCOMMODATIONS	
Length	24 ft		Total Accommodations	24
Width	12 ft		VIP Accommodations	2
Depth	2 ft		Galley & Dining	Fully Equipped
Bearing Load	3,000 lbs/ft ²		TV Lounge	Fully Equipped
Design	4-Way Slope		Laundry Facility	Fully Equipped
			Air Condition / Heater	Std Central Units
CRANE			PERFORMANCE	
	Port	Starboard	Estimated Speed	5 knots
Load Rating	10 ton	45 ton	Max Sep – Pad to Deck	114 ft
Make	EBI	Crown Point	Max Working Water Depth	90 ft
Model	C20B-50	CP 95KTB 1DE	Min Working Water Depth	7 ft
Boom Type	Fixed	Telescopic		
Boom Length	50 ft	70 ft		
Crane Inst. Type	Deck Mount	Deck Mount		
PROPULSION			DOCUMENTATION	
Mains - Make	GM		Class	None
Mains - Model	12V71		Flag/ Port of Registry	USA / New Orleans, LA
Horsepower	800 hp		USCG	Inspected
Bow Thruster Equipped	No		SOLAS	No
Clutch Make/Reduction	Twin Disc 3.5:1		Official Number	693612
Consumption/Engine-Full	19.4 gph		IMO	8763036
Consumption/Engine-Half	9.7 gph		Call Sign	WDH4784
			Year Built	1985
			Builder	Crown Point
			Registered Tonnage	171
			International Tonnage	None
GENERATORS				
Generator Engine Make	GM			
Generator Engine Model	4-71			
Generator Output	75 kw			
Consumption/Gen	6.4 gph			
DECK				
Total Deck Area	2,505 ft ²			
Clear Deck Area	1,412 ft ²			
Additional Clear Area	N/A			
Maximum Deck Load	150,000			



EBI 10 TON CRANE*		
C20B-50		
50 FT FIXED BOOM		
MAXIMUM SAFE WORKING LOAD		
BOOM RADIUS (ft)	ONBOARD LOAD (lbs.)	OFFBOARD LOAD (lbs.)
10	9,750	9,750
15	9,750	9,750
20	9,750	9,750
25	9,750	8,675
30	9,750	6,575
35	7,888	5,075
40	6,388	4,075
45	5,113	3,225
50	3,988	2,475

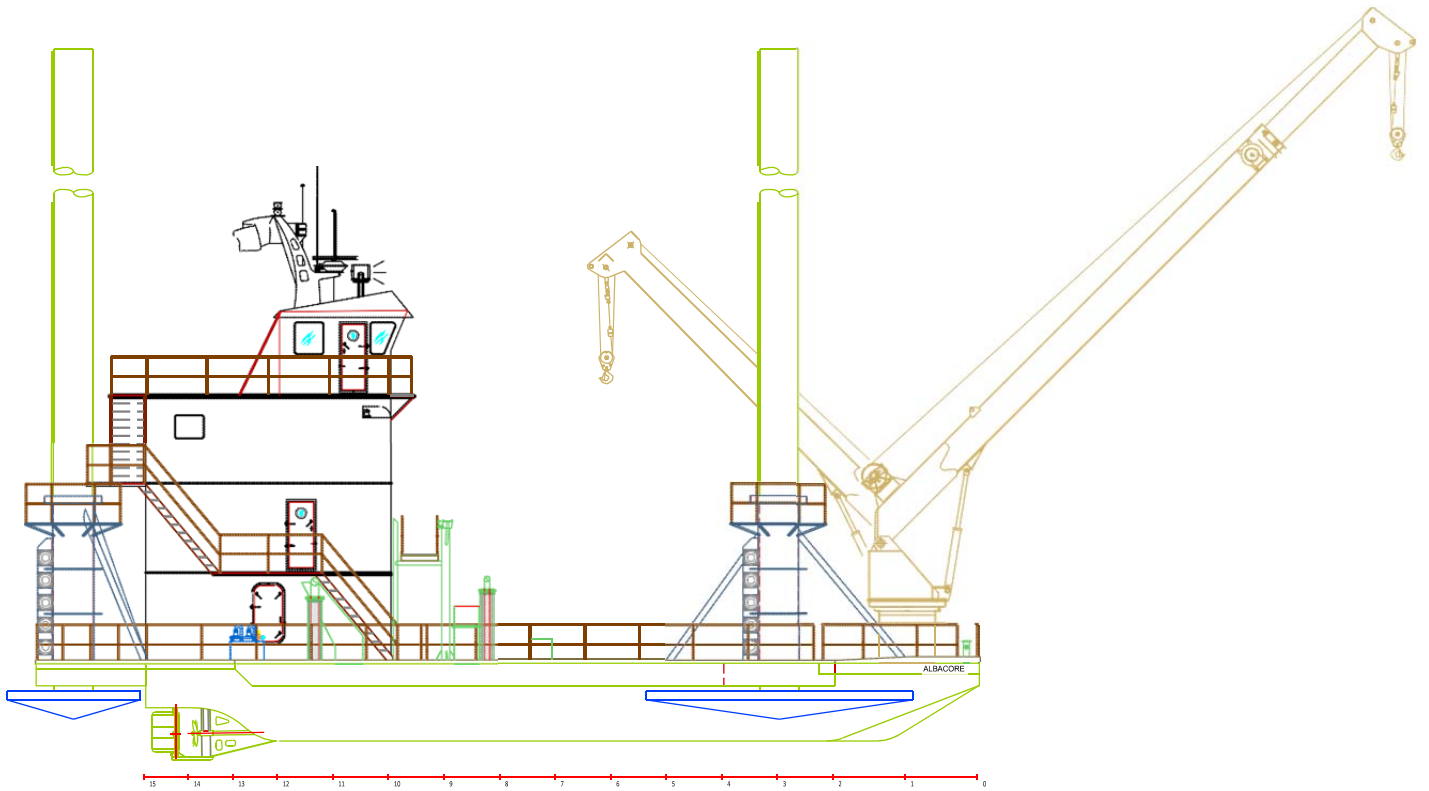
*CURRENT CONFIGURATION IS FOR 5 TONS



CROWN POINT 45 TON CRANE*		
CP95KTB1DE		
70 FT TELESCOPIC BOOM		
MAXIMUM SAFE WORKING LOAD		
50 FT BOOM RETRACTED		
BOOM RADIUS (ft)	ONBOARD LOAD (lbs.)	OFFBOARD LOAD (lbs.)
10	80,000	61,990
15	80,000	58,300
20	70,310	46,860
25	58,410	38,940
30	49,750	33,160
35	43,310	28,870
40	38,560	25,700
45	35,730	23,820
50	34,530	23,020
FAST LINES RATED FOR 4,360 LBS. AT ALL RADII		
70 FT BOOM EXTENDED		
BOOM RADIUS (ft)	ONBOARD LOAD (lbs.)	OFFBOARD LOAD (lbs.)
10	68,060	40,920
15	50,460	33,220
20	39,660	26,040
25	32,380	21,200
30	27,140	17,710
35	23,200	15,100
40	20,150	13,060
45	17,710	11,440
50	15,730	10,120
55	13,110	9,250
60	12,780	8,170
65	11,800	7,510
70	11,285	7,040
FAST LINES RATED FOR 2,821 AT ALL RADII		
*CURRENT CONFIGURATION IS FOR 40 TONS		



Outboard Profile

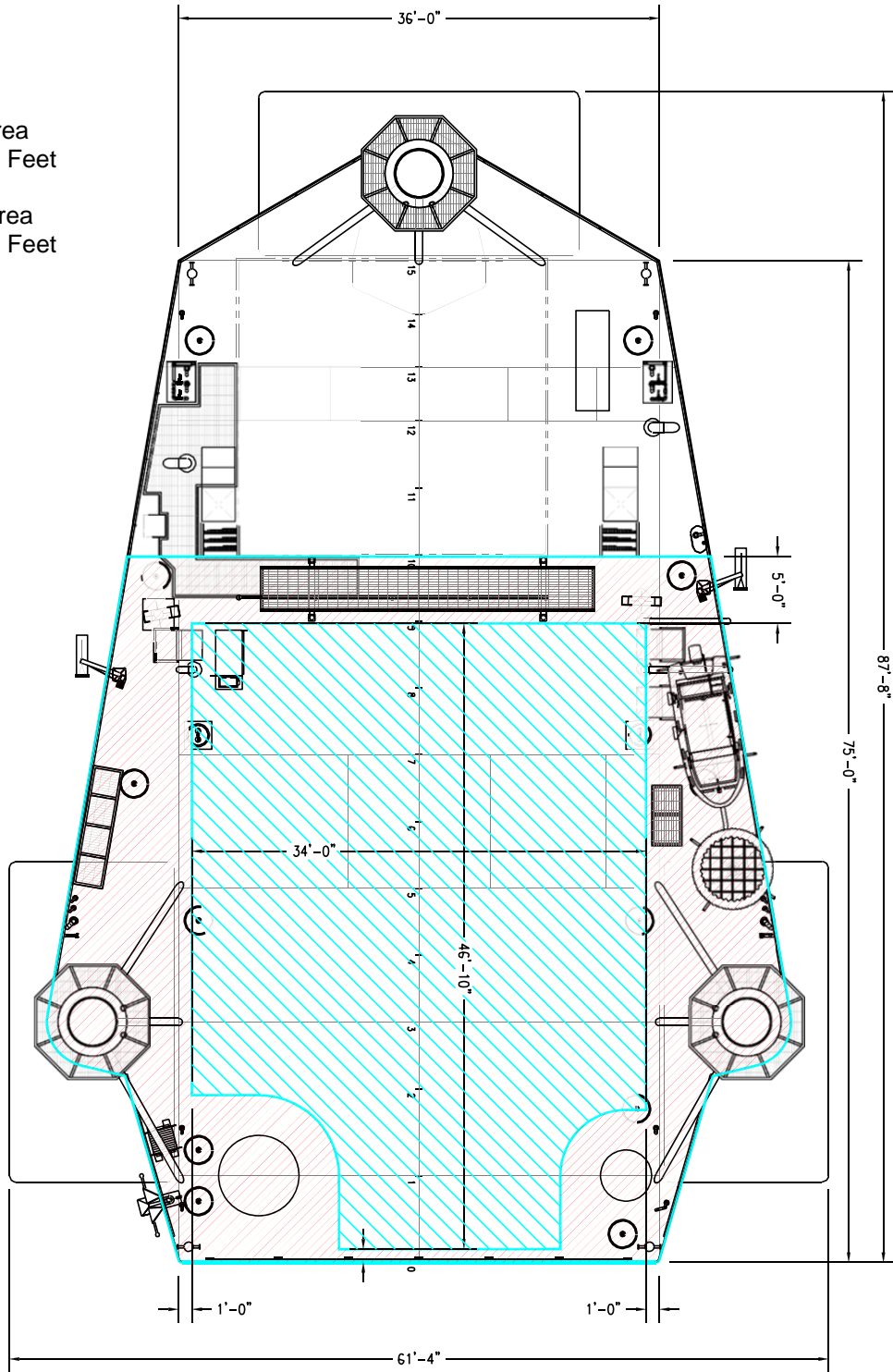




Open Deck Area

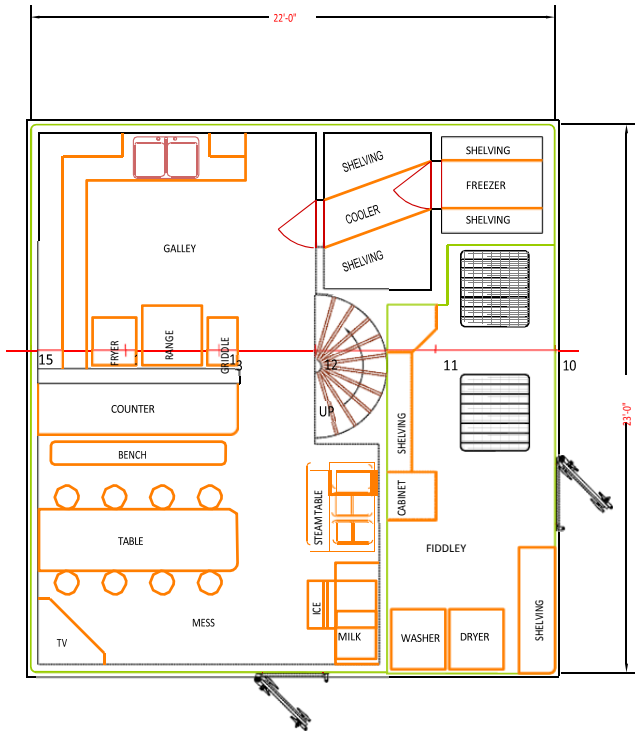
Total Deck Area
2,505 Square Feet

Clear Deck Area
1,412 Square Feet

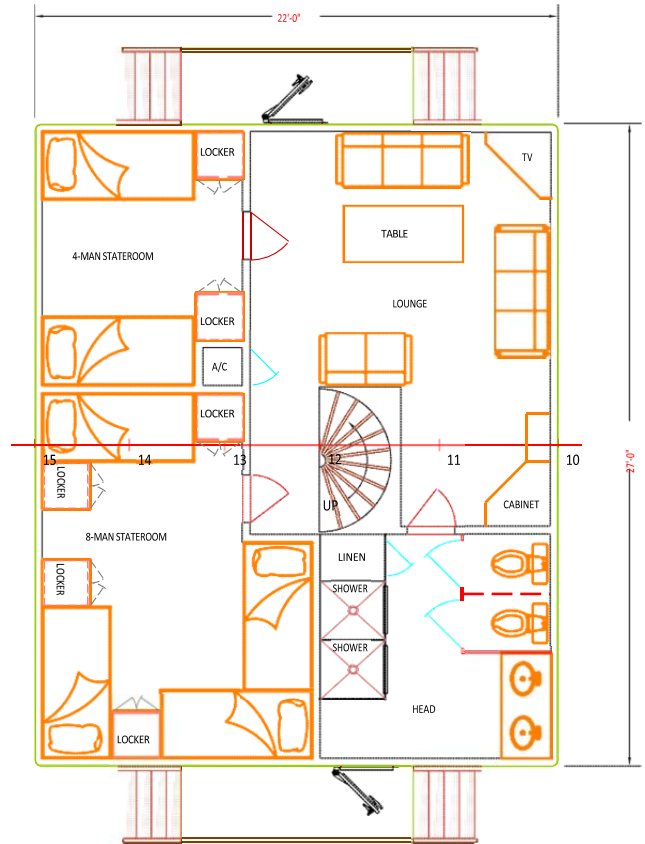




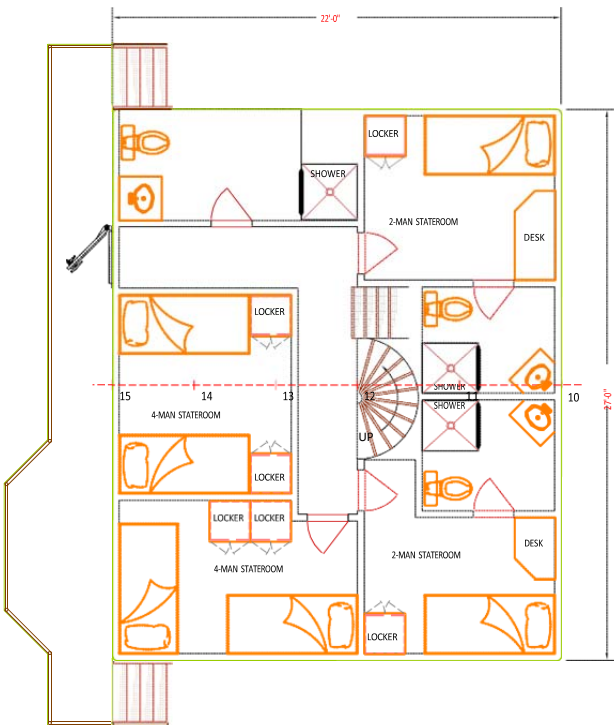
Main Deck Level Living Quarters



01 Deck Level Living Quarters



02 Deck Level Living Quarters



03 Deck Level Living Quarters

