



## Overview

### LEG

Leg Length	130 ft
Leg Diameter (Od)	42 in
Leg Tower Height	14 ft

### HULL

Length (Overall)	90.5 ft
Length (Barge Only)	78 ft
Beam (Overall)	63 ft
Beam (Barge Only)	38 ft
Hull Depth	8 ft

### PAD

Length	24 ft
Width	12 ft
Depth	2 ft
Bearing Load	3,000 lbs/ft <sup>2</sup>
Design	4-Way Slope

### CRANE

	Port	Starboard
Load Rating	45 ton	5 ton
Make	Nautilus	Nautilus
Model	M70-80	3000-101-020
Boom Type	Fixed	Fixed
Boom Length	80 ft	50 ft
Crane Inst. Type	Deck Mount	Deck Mount

### PROPULSION

Mains - Make	GM
Mains - Model	12V71
Horsepower	800 hp
Bow Thruster Equipped	No
Clutch Make/Reduction	Twin Disc 3.5:1
Consumption/Engine-Full	19.4 gph
Consumption/Engine-Half	9.7 gph

### GENERATORS

Generator Engine Make	GM
Generator Engine Model	4-71
Generator Output	75 kw
Consumption/Gen	6.4 gph

### DECK

Total Deck Area	2,288 ft <sup>2</sup>
Clear Deck Area	1,334 ft <sup>2</sup>
Additional Clear Area	N/A
Maximum Deck Load	130,000

### CAPACITIES

Diesel Fuel	4,000 usg
Lube	150 usg
Hydraulic Oil	1,353 usg
Potable Water	4,000 usg
Watermaker Equipped	No

### ELECTRONIC AIDS & COMMUNICATION

Compass	Fully Equipped
Gps/Dgps	Fully Equipped
Radar(s)	Fully Equipped
Fathometer	Fully Equipped
Loudhailer	Fully Equipped
Satellite Phone	Fully Equipped
VHF Radio	Fully Equipped
Single Sideband Radio	Fully Equipped
EPIRB	Fully Equipped
GMDSS	No

### PERSONNEL ACCOMMODATIONS

Total Accommodations	27
VIP Accommodations	2
Galley & Dining	Fully Equipped
TV Lounge	Fully Equipped
Laundry Facility	Fully Equipped
Air Condition / Heater	Std Central Units

### PERFORMANCE

Estimated Speed	5 knots
Max Sep – Pad to Deck	117 ft
Max Working Water Depth	70 ft
Min Working Water Depth	7 ft

### DOCUMENTATION

Class	None
Flag/ Port of Registry	USA / New Orleans, LA
USCG	Inspected
SOLAS	No
Official Number	626741
IMO	8766155
Call Sign	WDH5371
Year Built	1980
Builder	Blue Streak
Registered Tonnage	178
International Tonnage	None



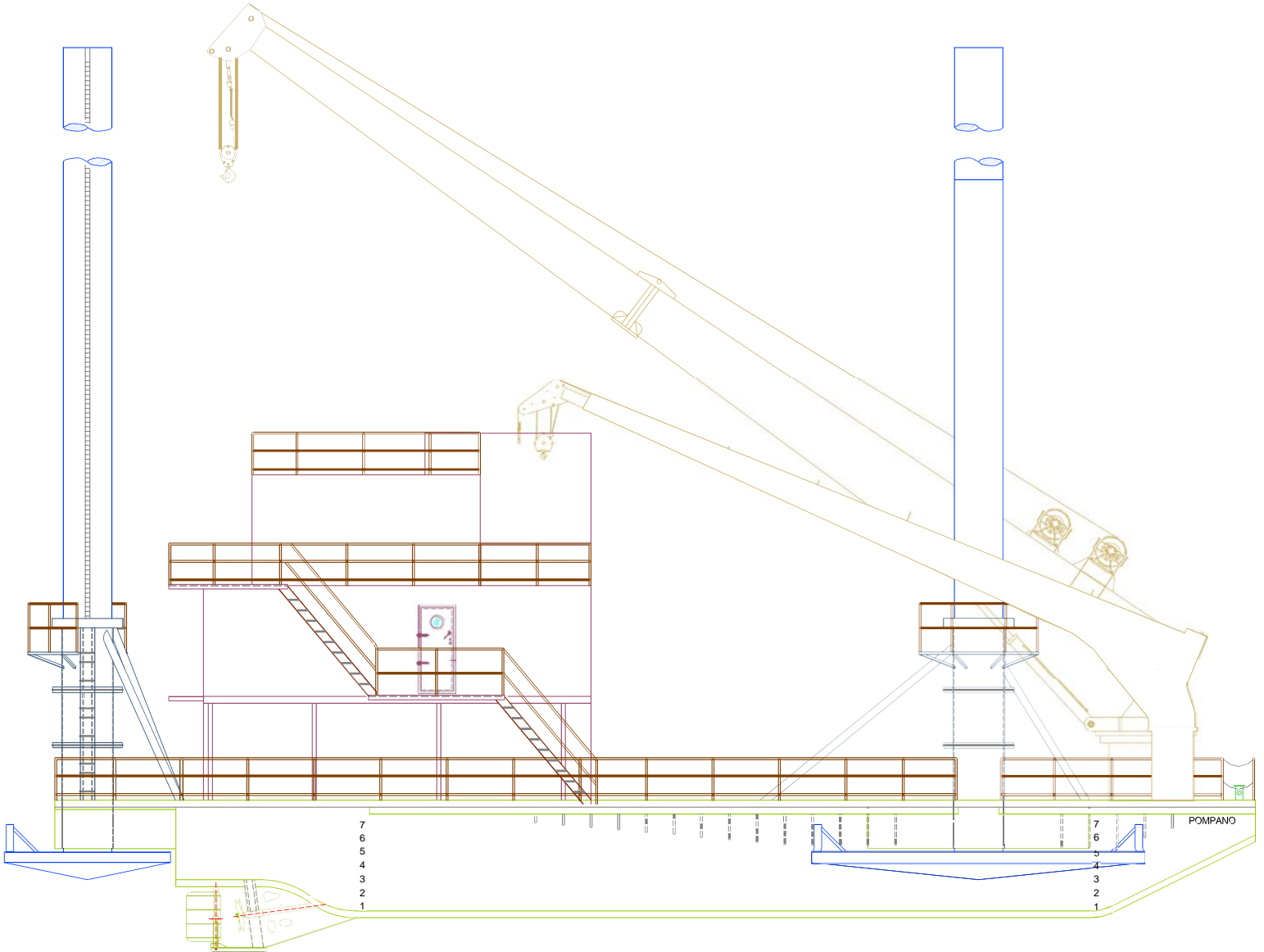
<b>NAUTILUS 45 TON CRANE</b>		
<b>M70-80</b>		
<b>80 FT FIXED BOOM</b>		
<b>MAXIMUM SAFE WORKING LOAD</b>		
<b>BOOM RADIUS (ft)</b>	<b>ONBOARD LOAD (lbs.)</b>	<b>OFFBOARD LOAD (lbs.)</b>
10	94,767	94,767
15	94,767	80,880
20	94,767	63,580
25	79,970	53,313
30	68,710	45,807
35	60,400	40,267
40	53,870	35,913
45	48,560	32,373
50	44,040	29,360
55	40,140	26,760
60	36,530	24,353
65	33,010	22,007
70	29,140	19,427
75	23,250	15,550
76.5	15,180	10,120
<b>FAST LINE RATED FOR 8,000 LBS AT ALL RADII</b>		



<b>NAUTILUS 5 TON CRANE</b>		
<b>3000-101-020</b>		
<b>50 FT FIXED BOOM</b>		
<b>MAXIMUM SAFE WORKING LOAD</b>		
<b>BOOM RADIUS (ft)</b>	<b>ONBOARD LOAD (lbs.)</b>	<b>OFFBOARD LOAD (lbs.)</b>
10	11,670	7,670
15	8,170	5,337
20	6,470	4,203
25	5,470	3,537
30	4,770	3,070
35	4,270	2,737
40	3,870	2,470
45	3,520	2,237
50	3,070	1,937



## Outboard Profile

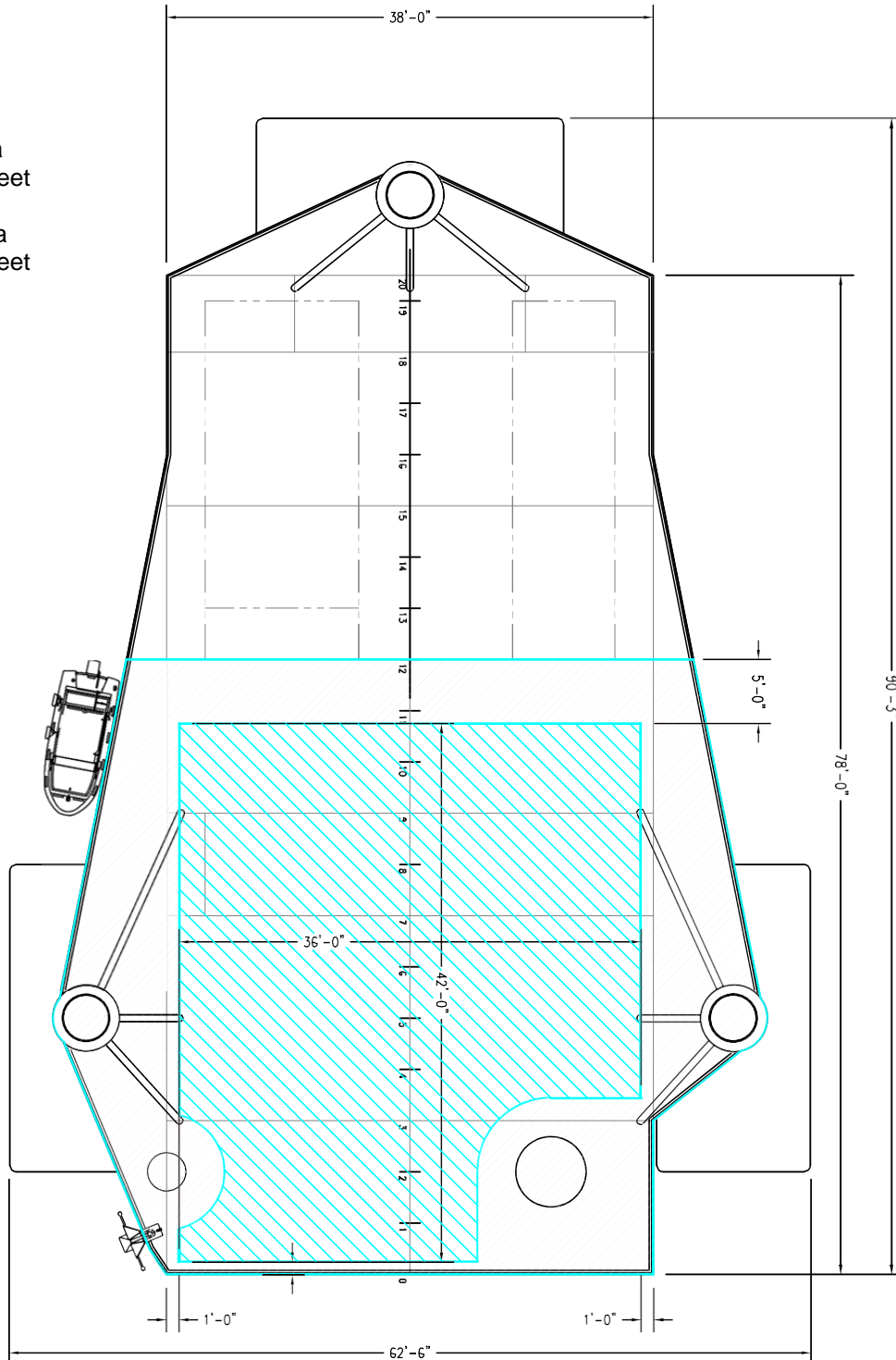




**Open Deck Area**

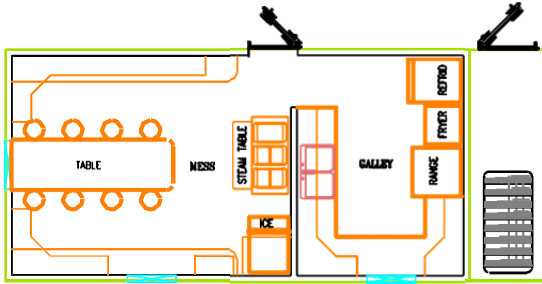
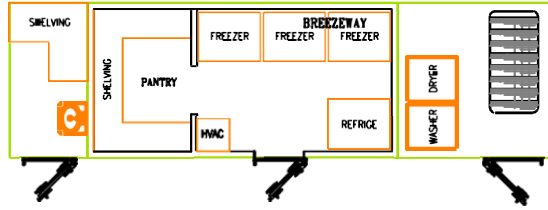
Total Deck Area  
2,288 Square Feet

Clear Deck Area  
1,334 Square Feet

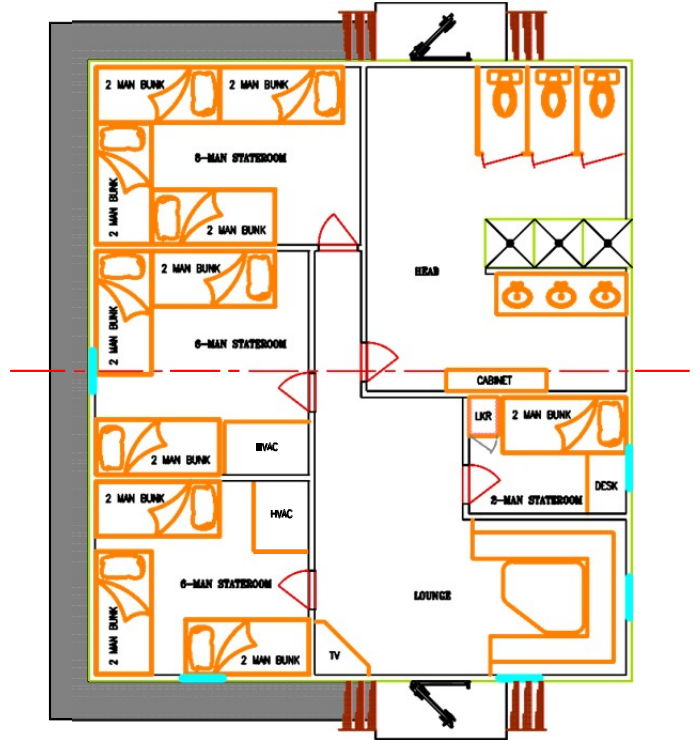




## Main Deck Quarters



## 01 Level Quarters



## 02 Level Quarters

