



## Overview

### LEG

Leg Length	130 ft
Leg Diameter (Od)	42 in
Leg Tower Height	15 ft

### HULL

Length (Overall)	87.5 ft
Length (Barge Only)	75 ft
Beam (Overall)	61 ft
Beam (Barge Only)	36 ft
Hull Depth	7 ft

### PAD

Length	24 ft
Width	12 ft
Depth	2 ft
Bearing Load	3,000 lbs/ft <sup>2</sup>
Design	4-Way Slope

### CRANE

	Port	Starboard
Load Rating	25 ton	10 ton
Make	SeaTrax	EBI
Model	RF 1573	C20-50
Boom Type	Fixed	Fixed
Boom Length	73 ft	50 ft
Crane Inst. Type	Deck Mount	Deck Mount

### PROPULSION

Mains - Make	GM
Mains - Model	12V71
Horsepower	800 hp
Bow Thruster Equipped	No
Clutch Make/Reduction	Twin Disc 3:1
Consumption/Engine-Full	19.4 gph
Consumption/Engine-Half	9.7 gph

### GENERATORS

Generator Engine Make	GM
Generator Engine Model	4-71
Generator Output	75 kw
Consumption/Gen	6.4 gph

### DECK

Total Deck Area	2,604 ft <sup>2</sup>
Clear Deck Area	1,436 ft <sup>2</sup>
Additional Clear Area	N/A
Maximum Deck Load	137,000

### CAPACITIES

Diesel Fuel	3,968 usg
Lube	120 usg
Hydraulic Oil	1,303 usg
Potable Water	5,984 usg
Watermaker Equipped	No

### ELECTRONIC AIDS & COMMUNICATION

Compass	Fully Equipped
Gps/Dgps	Fully Equipped
Radar(s)	Fully Equipped
Fathometer	Fully Equipped
Loudhailer	Fully Equipped
Satellite Phone	Fully Equipped
VHF Radio	Fully Equipped
Single Sideband Radio	Fully Equipped
EPIRB	Fully Equipped
GMDSS	No

### PERSONNEL ACCOMMODATIONS

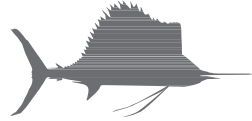
Total Accommodations	23
VIP Accommodations	2
Galley & Dining	Fully Equipped
TV Lounge	Fully Equipped
Laundry Facility	Fully Equipped
Air Condition / Heater	Std Central Units

### PERFORMANCE

Estimated Speed	5 knots
Max Sep – Pad to Deck	114 ft
Max Working Water Depth	90 ft
Min Working Water Depth	7 ft

### DOCUMENTATION

Class	None
Flag/ Port of Registry	USA / New Orleans, LA
USCG	Inspected
SOLAS	No
Official Number	650777
IMO	8763074
Call Sign	WDH5370
Year Built	1982
Builder	Crown Point
Registered Tonnage	179
International Tonnage	None



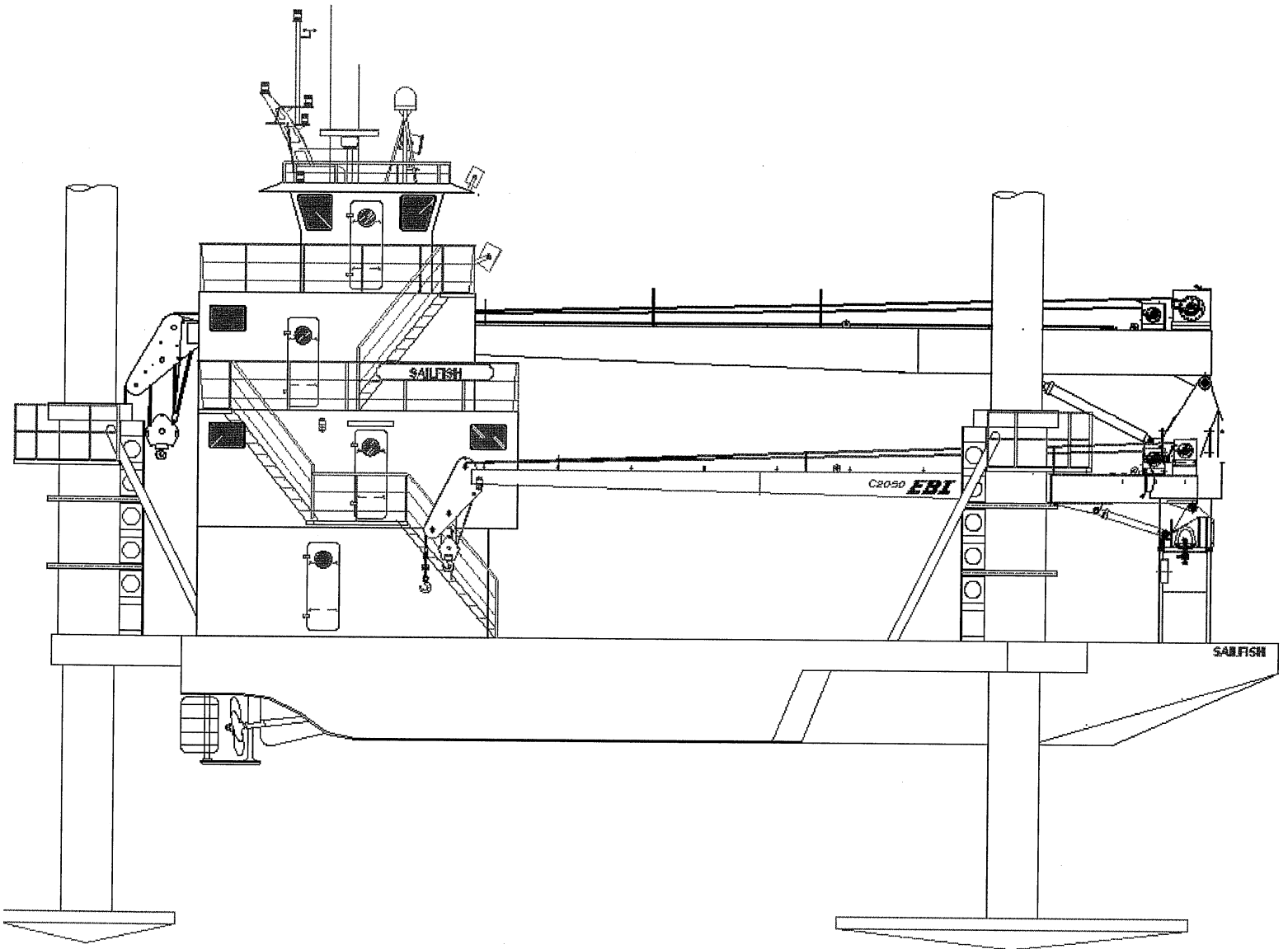
<b>SEATRAX 25 TON CRANE</b>		
<b>MONARCH RF1573</b>		
<b>70 FT FIXED BOOM</b>		
<b>MAXIMUM SAFE WORKING LOAD</b>		
<b>BOOM RADIUS (ft)</b>	<b>ONBOARD LOAD (lbs.)</b>	<b>OFFBOARD LOAD (lbs.)</b>
10	50,000	41,463
15	50,000	37,567
20	50,000	33,797
25	45,749	30,499
30	38,711	27,732
35	33,033	25,365
40	28,663	23,250
45	25,140	19,954
50	22,171	18,446
55	19,546	17,188
60	17,069	15,982
65	14,466	14,466
70	10,829	10,829
72	7,000	7,000
<b>FAST LINE RATED FOR 12,420 LBS UP TO 65 FEET</b>		



<b>EBI 10 TON CRANE*</b>		
<b>C20B-50</b>		
<b>50 FT FIXED BOOM</b>		
<b>MAXIMUM SAFE WORKING LOAD</b>		
<b>BOOM RADIUS (ft)</b>	<b>ONBOARD LOAD (lbs.)</b>	<b>OFFBOARD LOAD (lbs.)</b>
10	9,750	9,750
15	9,750	9,750
20	9,750	9,750
25	9,750	8,675
30	9,750	6,575
35	7,888	5,075
40	6,388	4,075
45	5,113	3,225
50	3,988	2,475
*CURRENT CONFIGURATION IS FOR 5 TONS		



**Outboard Profile**

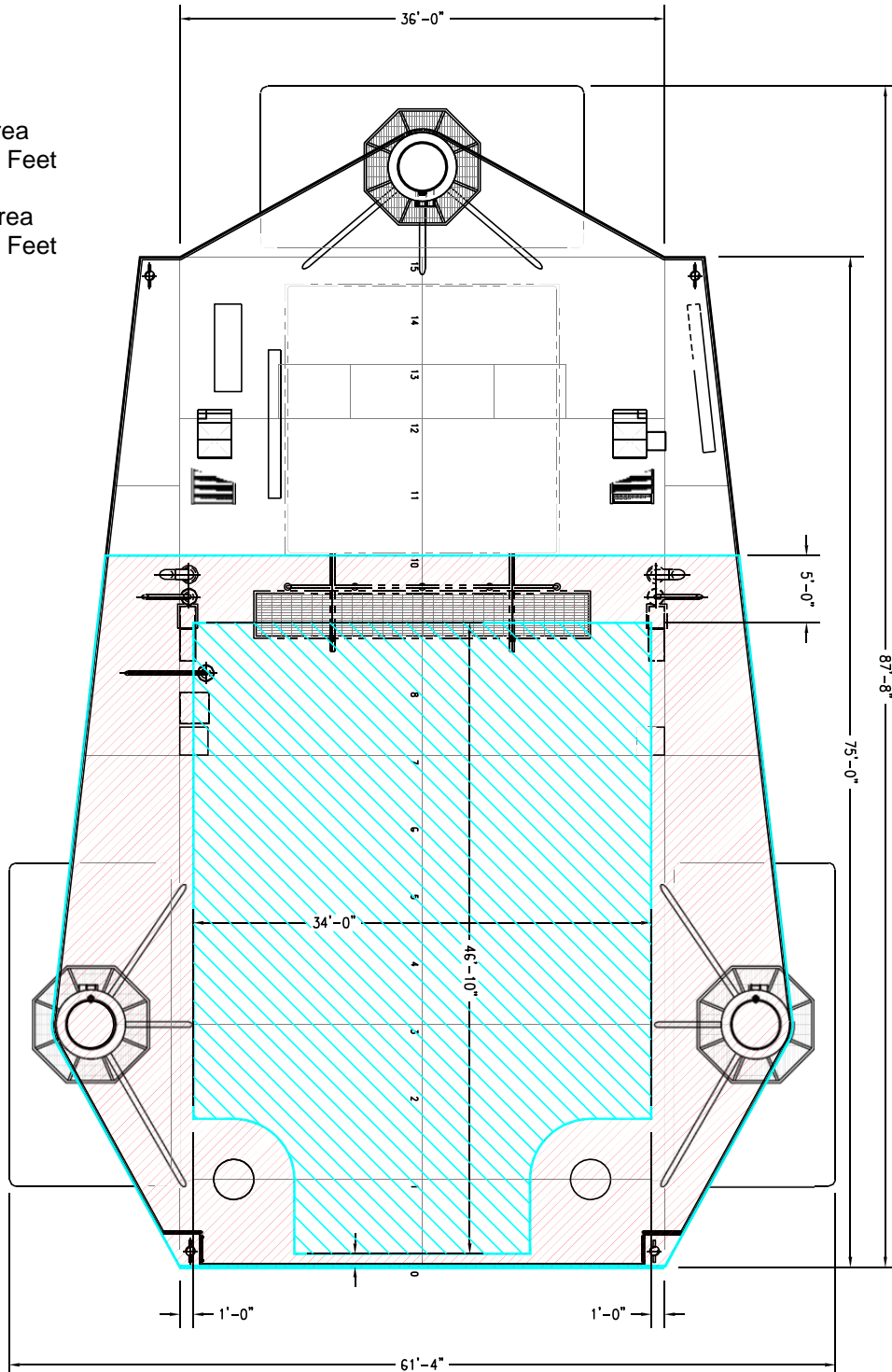




**Open Deck Area**

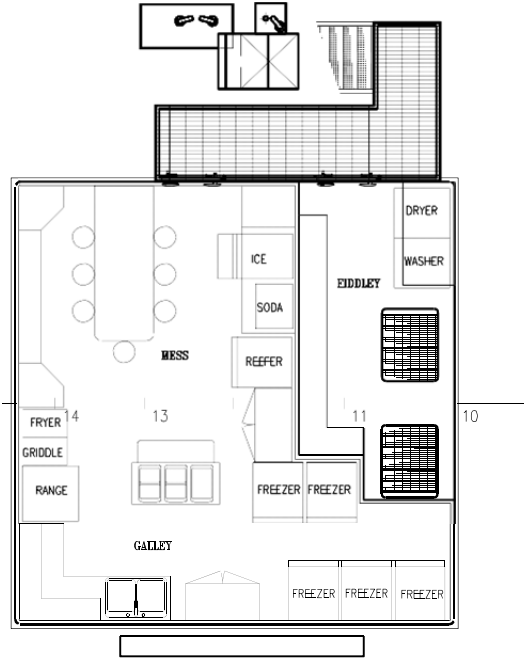
Total Deck Area  
2,604 Square Feet

Clear Deck Area  
1,436 Square Feet

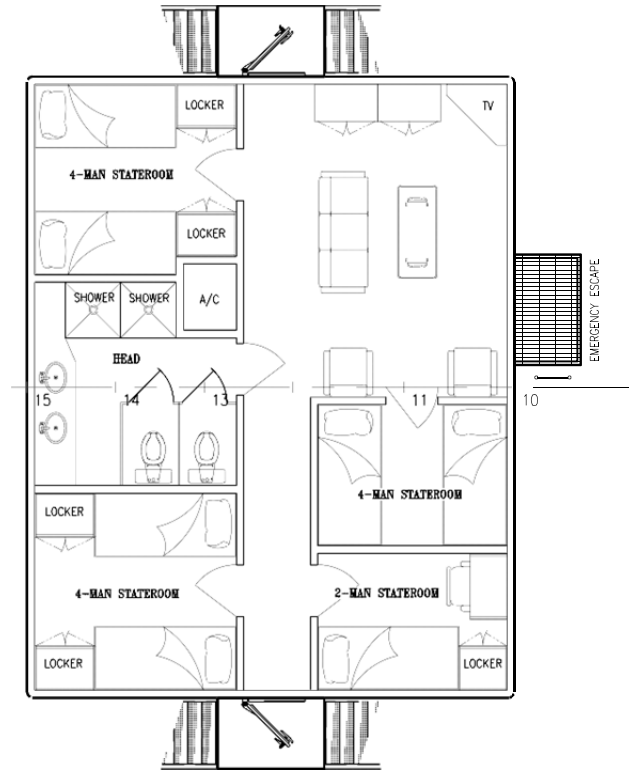




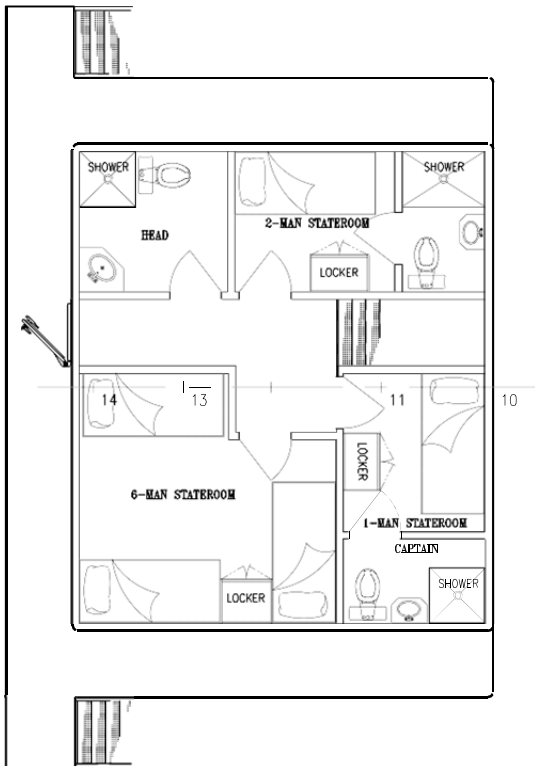
### Main Deck Quarters



### 01 Level Quarters



### 02 Level Quarters



### Pilothouse

