



Overview

LEG

Leg Length	130 ft
Leg Diameter (Od)	42 in
Leg Tower Height	14 ft

HULL

Length (Overall)	93.5 ft
Length (Barge Only)	81 ft
Beam (Overall)	63 ft
Beam (Barge Only)	38 ft
Hull Depth	8 ft

PAD

Length	24 ft
Width	12 ft
Depth	2 ft
Bearing Load	3,000 lbs/ft ²
Design	4-Way Slope

CRANE

	Port	Starboard
Load Rating	40 ton	10 ton
Make	Nautilus	EBI
Model	40-3-70	C20-60
Boom Type	Telescopic	Fixed
Boom Length	70 ft	60 ft
Crane Inst. Type	Deck Mount	Deck Mount

PROPULSION

Mains - Make	GM
Mains - Model	12V71
Horsepower	800 hp
Bow Thruster Equipped	No
Clutch Make/Reduction	Twin Disc 3:1
Consumption/Engine-Full	19.4 gph
Consumption/Engine-Half	9.7 gph

GENERATORS

Generator Engine Make	GM
Generator Engine Model	8V71
Generator Output	100 kw
Consumption/Gen	10 gph

DECK

Total Deck Area	2,477 ft ²
Clear Deck Area	1,421 ft ²
Additional Clear Area	N/A
Maximum Deck Load	150,000

CAPACITIES

Diesel Fuel	4,452 usg
Lube	147 usg
Hydraulic Oil	1,353 usg
Potable Water	10,104 usg
Watermaker Equipped	No

ELECTRONIC AIDS & COMMUNICATION

Compass	Fully Equipped
Gps/Dgps	Fully Equipped
Radar(s)	Fully Equipped
Fathometer	Fully Equipped
Loudhailer	Fully Equipped
Satellite Phone	Fully Equipped
VHF Radio	Fully Equipped
Single Sideband Radio	Fully Equipped
EPIRB	Fully Equipped
GMDSS	No

PERSONNEL ACCOMMODATIONS

Total Accommodations	27
VIP Accommodations	2
Galley & Dining	Fully Equipped
TV Lounge	Fully Equipped
Laundry Facility	Fully Equipped
Air Condition / Heater	Std Central Units

PERFORMANCE

Estimated Speed	5 knots
Max Sep – Pad to Deck	117 ft
Max Working Water Depth	70 ft
Min Working Water Depth	7 ft

DOCUMENTATION

Class	None
Flag/ Port of Registry	USA / New Orleans, LA
USCG	Inspected
SOLAS	No
Official Number	645540
IMO	8763775
Call Sign	WDH5084
Year Built	1982
Builder	Blue Streak
Registered Tonnage	196
International Tonnage	None



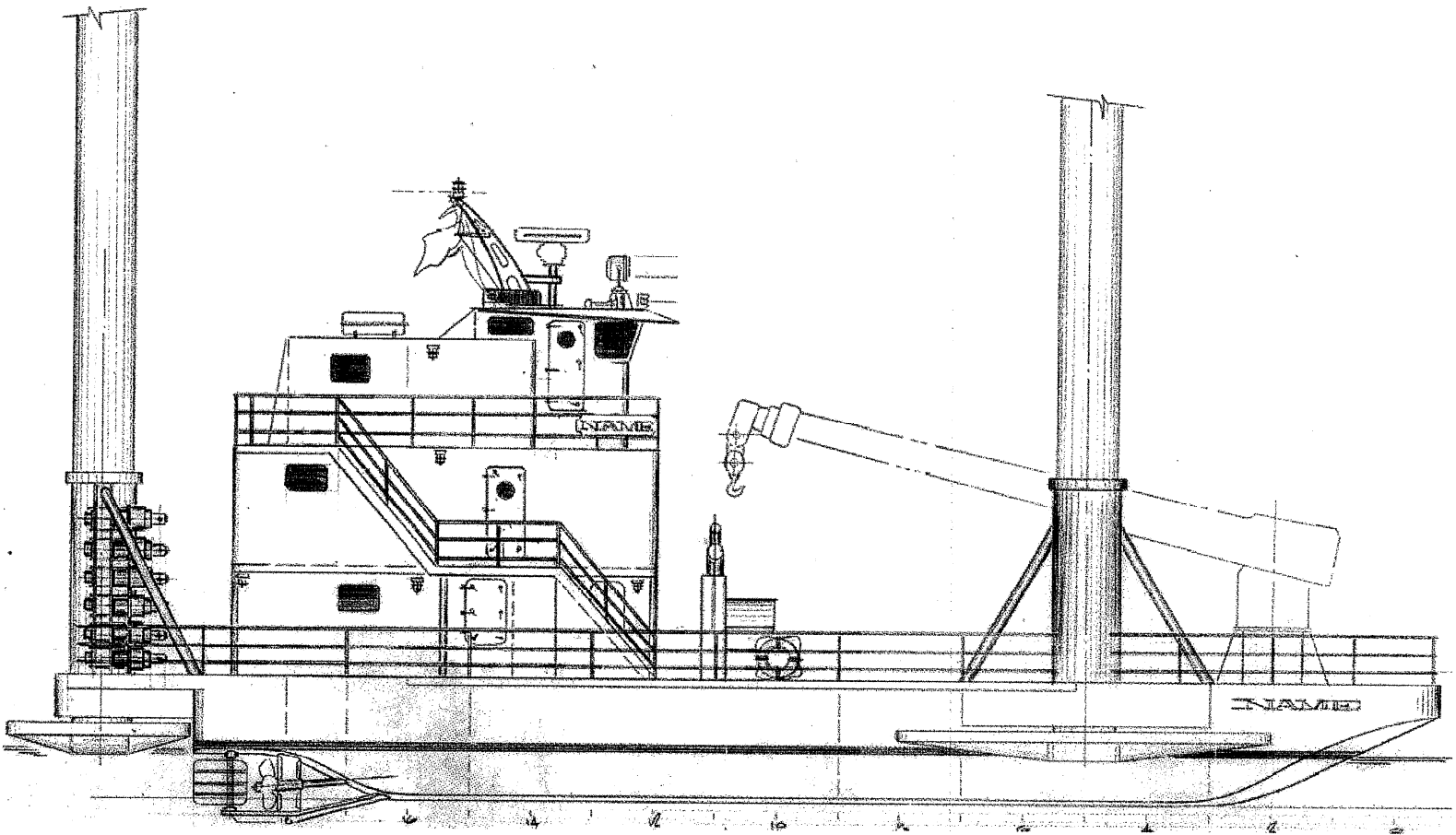
NAUTILUS 40 TON CRANE		
40-3-70		
70 FT TELESCOPIC BOOM		
MAXIMUM SAFE WORKING LOAD		
50 FT BOOM RETRACTED		
BOOM RADIUS (ft)	ONBOARD LOAD (lbs.)	OFFBOARD LOAD (lbs.)
10	70,000	46,667
15	57,000	38,000
20	45,000	30,000
25	37,000	24,667
30	36,000	24,000
35	27,700	18,467
40	26,000	17,333
45	20,374	13,583
50	11,576	7,717
FAST LINE RATED FOR 4,688 LBS AT ALL RADII		
70 FT BOOM EXTENDED		
BOOM RADIUS (ft)	ONBOARD LOAD (lbs.)	OFFBOARD LOAD (lbs.)
12	50,000	33,333
15	47,500	31,667
20	43,502	29,001
25	35,600	23,733
30	27,825	18,550
35	24,300	16,200
40	20,765	13,843
45	18,900	12,600
50	17,035	11,357
55	15,500	10,333
60	14,090	9,393
65	13,143	8,762
70	7,500	5,000
FAST LINE RATED FOR 4,688 LBS AT ALL RADII		



EBI 10 TON CRANE*		
C20-60 60 FT FIXED BOOM MAXIMUM SAFE WORKING LOAD		
BOOM RADIUS (ft)	ONBOARD LOAD (lbs.)	OFFBOARD LOAD (lbs.)
10	4,900	4,900
15	4,900	4,900
20	4,900	4,900
25	4,900	4,550
30	4,900	3,500
35	4,350	2,700
40	3,550	2,150
45	2,950	1,750
50	2,550	1,500
55	1,550	850
60	950	450
*CURRENT CONFIGURATION IS FOR 2.5 TONS		



Outboard Profile

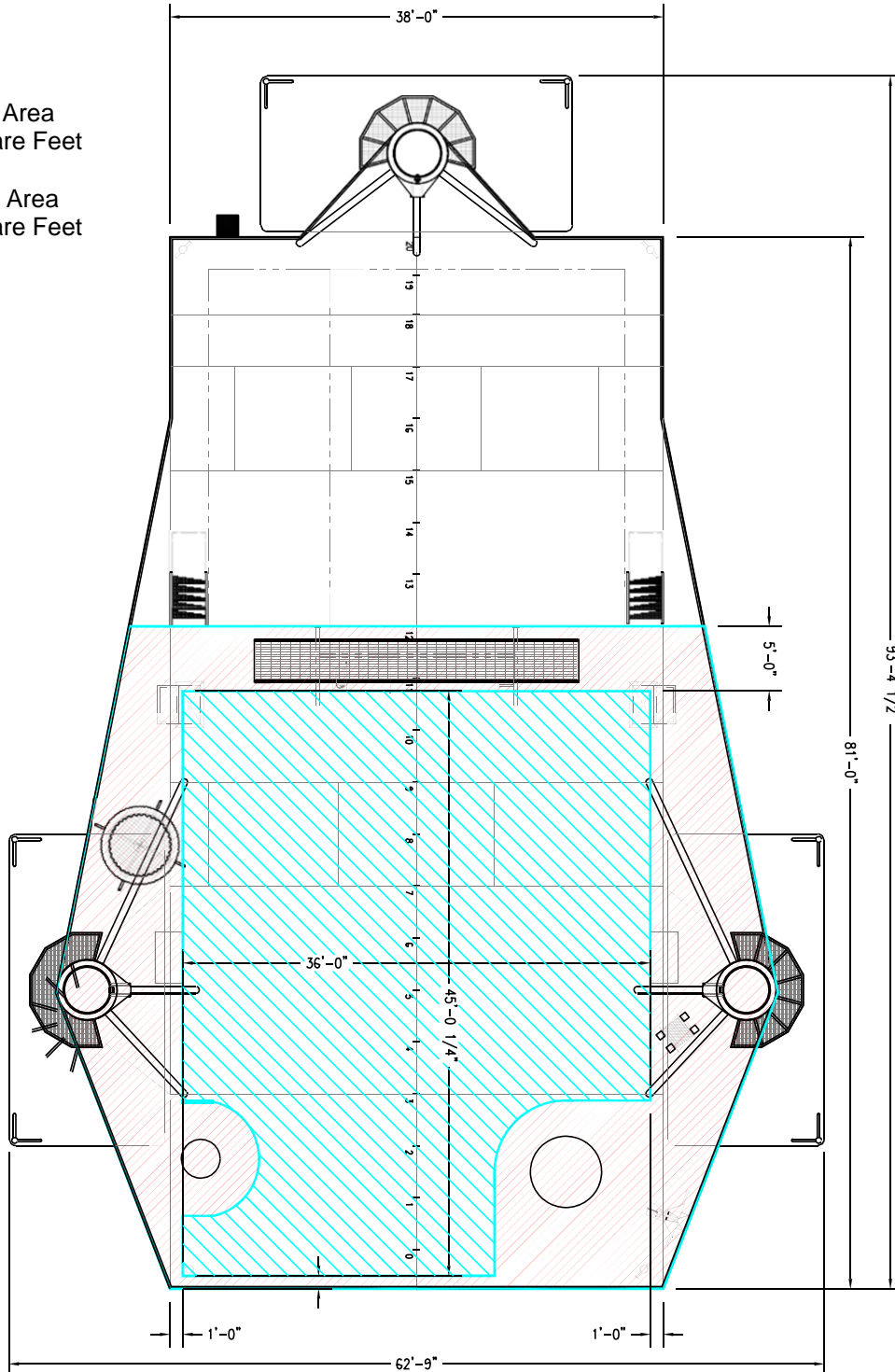




Open Deck Area

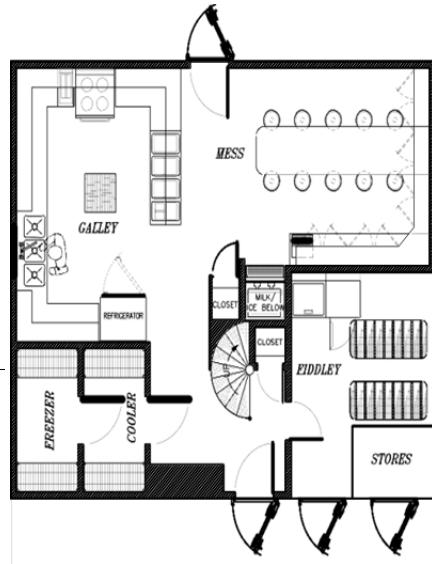
Total Deck Area
2,477 Square Feet

Clear Deck Area
1,421 Square Feet

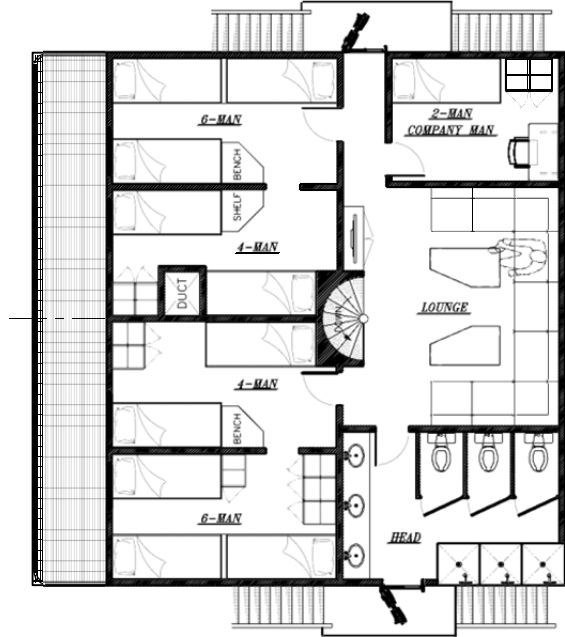




Main Deck Quarters



01 Level Quarters



Pilothouse

