

## Overview

### LEG

Leg Length	130 ft
Leg Diameter (Od)	42 in
Leg Tower Height	13 ft

### HULL

Length (Overall)	86 ft
Length (Barge Only)	74 ft
Beam (Overall)	67 ft
Beam (Barge Only)	42 ft
Hull Depth	7 ft

### PAD

Length	24 ft
Width	12 ft
Depth	2 ft
Bearing Load	3,000 lbs/ft <sup>2</sup>
Design	4-Way Slope

### CRANE

	Port	Starboard
Load Rating	15 ton	35 ton
Make	OECO	OECO
Model	99C02	99C035
Boom Type	Telescopic	Telescopic
Boom Length	70 ft	70 ft
Crane Inst. Type	Deck Mount	Deck Mount

### PROPULSION

Mains - Make	GM
Mains - Model	12V71
Horsepower	800 hp
Bow Thruster Equipped	No
Clutch Make/Reduction	Twin Disc 5.16:1
Consumption/Engine-Full	19.4 gph
Consumption/Engine-Half	9.7 gph

### GENERATORS

Generator Engine Make	GM
Generator Engine Model	4-71
Generator Output	50 kw
Consumption/Gen	5.0 gph

### DECK

Total Deck Area	2,159 ft <sup>2</sup>
Clear Deck Area	1,475 ft <sup>2</sup>
Additional Clear Area	N/A
Maximum Deck Load	150,000

### CAPACITIES

Diesel Fuel	5,132 usg
Lube	112 usg
Hydraulic Oil	1,322 usg
Potable Water	5,500 usg
Watermaker Equipped	No

### ELECTRONIC AIDS & COMMUNICATION

Compass	Fully Equipped
Gps/Dgps	Fully Equipped
Radar(s)	Fully Equipped
Fathometer	Fully Equipped
Loudhailer	Fully Equipped
Satellite Phone	Fully Equipped
VHF Radio	Fully Equipped
Single Sideband Radio	Fully Equipped
EPIRB	Fully Equipped
GMDSS	No

### PERSONNEL ACCOMMODATIONS

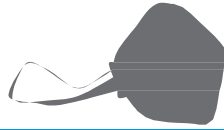
Total Accommodations	21
VIP Accommodations	2
Galley & Dining	Fully Equipped
TV Lounge	Fully Equipped
Laundry Facility	Fully Equipped
Air Condition / Heater	Std Central Units

### PERFORMANCE

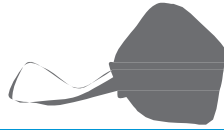
Estimated Speed	5 knots
Max Sep – Pad to Deck	117 ft
Max Working Water Depth	90 ft
Min Working Water Depth	7 ft

### DOCUMENTATION

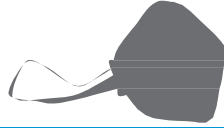
Class	None
Flag/ Port of Registry	USA / New Orleans, LA
USCG	Inspected
SOLAS	No
Official Number	603825
IMO	7942764
Call Sign	WDH5083
Year Built	1979
Builder	Sun Contractors
Registered Tonnage	99
International Tonnage	None



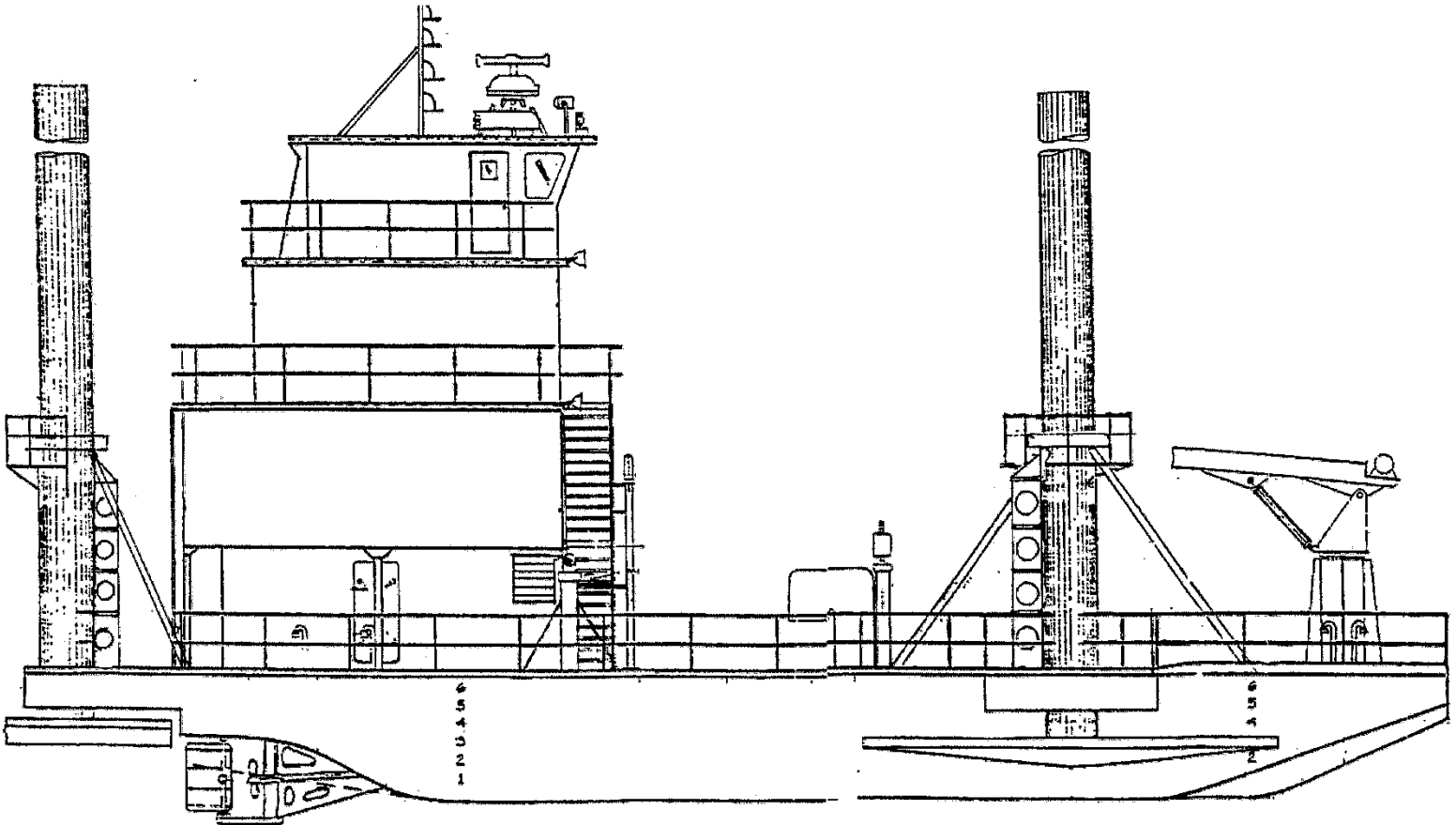
<b>OECO 15 TON CRANE*</b>		
<b>99C02</b>		
<b>70 FT TELESCOPIC CRANE</b>		
<b>MAXIMUM SAFE WORKING LOAD</b>		
<b>50 FT BOOM RETRACTED</b>		
<b>BOOM RADIUS (ft)</b>	<b>ONBOARD LOAD</b>	<b>OFFBOARD LOAD (lbs.)</b>
7	16,000	10,667
13	16,000	10,667
17	15,800	10,533
25	10,440	6,960
32	7,346	4,897
38	5,604	3,736
43	4,555	3,037
47	3,925	2,617
49	3,586	2,391
50	3,478	2,319
<b>70 FT BOOM EXTENDED</b>		
<b>BOOM RADIUS (ft)</b>	<b>ONBOARD LOAD (lbs.)</b>	<b>OFFBOARD LOAD (lbs.)</b>
10	16,000	10,667
18	12,000	8,000
24	9,800	6,533
35	6,828	4,552
45	4,619	3,079
54	3,374	2,249
61	2,625	1,750
66	2,484	1,656
69	2,342	1,561
70	2,200	1,467
<b>*CURRENT CONFIGURATION IS FOR 8 TONS</b>		

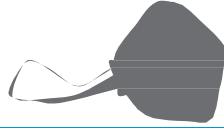


<b>OECO 35 TON CRANE</b>		
<b>99C035</b>		
<b>70 FT TELESCOPIC BOOM</b>		
<b>MAXIMUM SAFE WORKING LOAD</b>		
<b>50FT BOOM RETRACTED</b>		
<b>BOOM RADIUS (ft)</b>	<b>ONBOARD LOAD (lbs.)</b>	<b>OFFBOARD LOAD (lbs.)</b>
8	76,140	50,760
10	63,780	42,520
18	36,600	24,400
26	26,800	17,867
33	21,600	14,400
39	18,300	12,200
44	15,900	10,600
47	13,900	9,267
49	12,000	8,000
50	9,800	6,533
<b>FAST LINE RATED FOR 3,567 LBS AT ALL RADII</b>		
<b>70 FT BOOM EXTENDED</b>		
<b>BOOM RADIUS (ft)</b>	<b>ONBOARD LOAD (lbs.)</b>	<b>OFFBOARD LOAD (lbs.)</b>
11	55,700	37,133
13	46,100	30,733
25	25,600	17,067
36	18,300	12,200
46	14,500	9,667
54	12,100	8,067
61	10,300	6,867
66	8,900	5,933
69	7,500	5,000
70	5,900	3,933
<b>FAST LINE RATED FOR 3,567 LBS AT ALL RADII</b>		



**Outboard Profile**

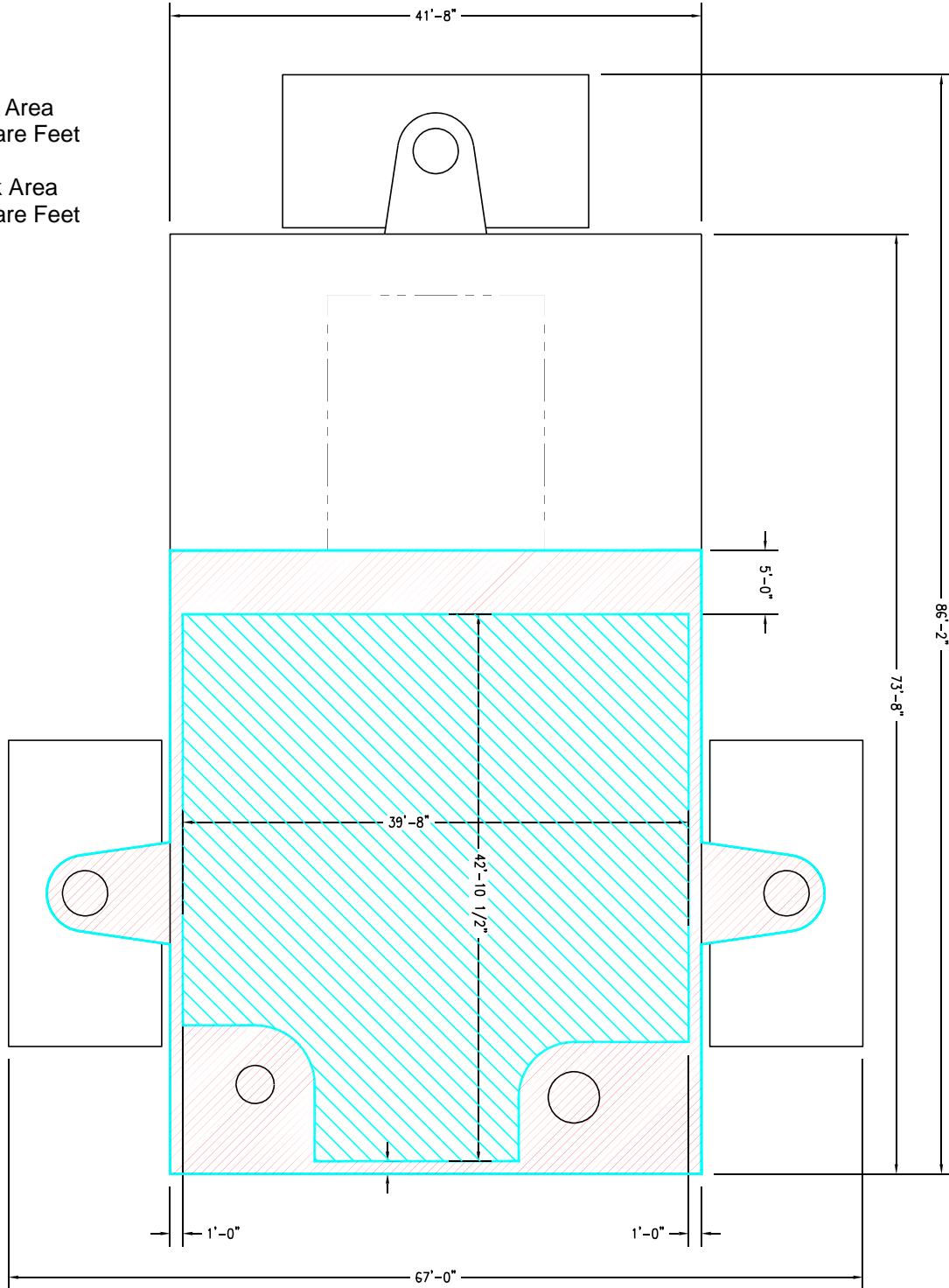


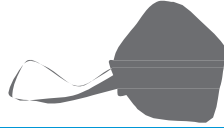


### Open Deck Area

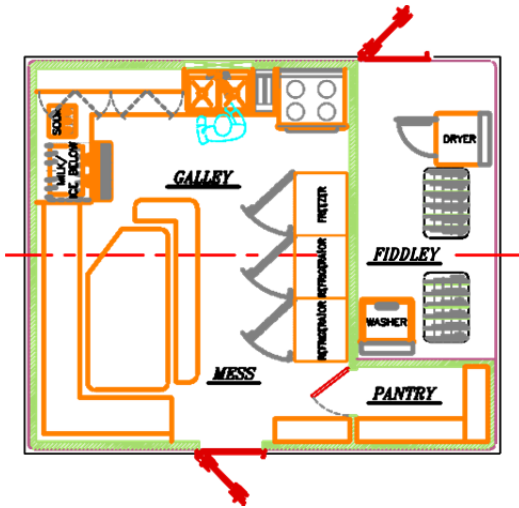
Total Deck Area  
2,159 Square Feet

Clear Deck Area  
1,475 Square Feet

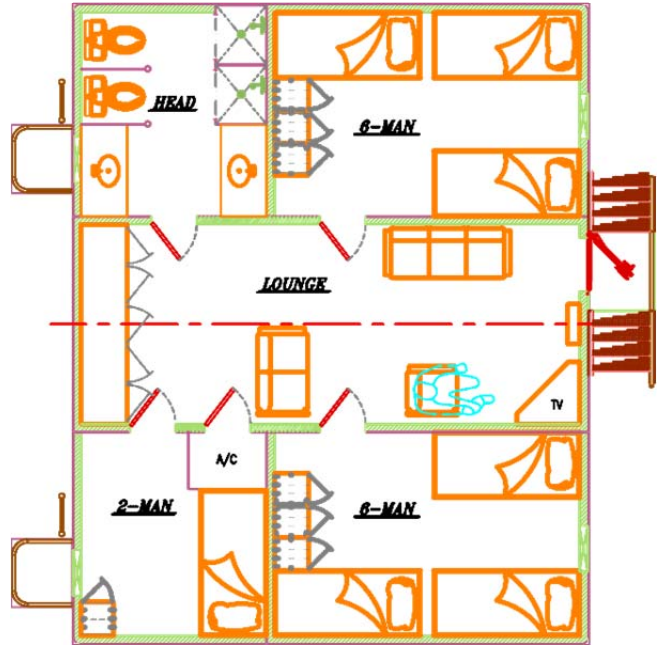




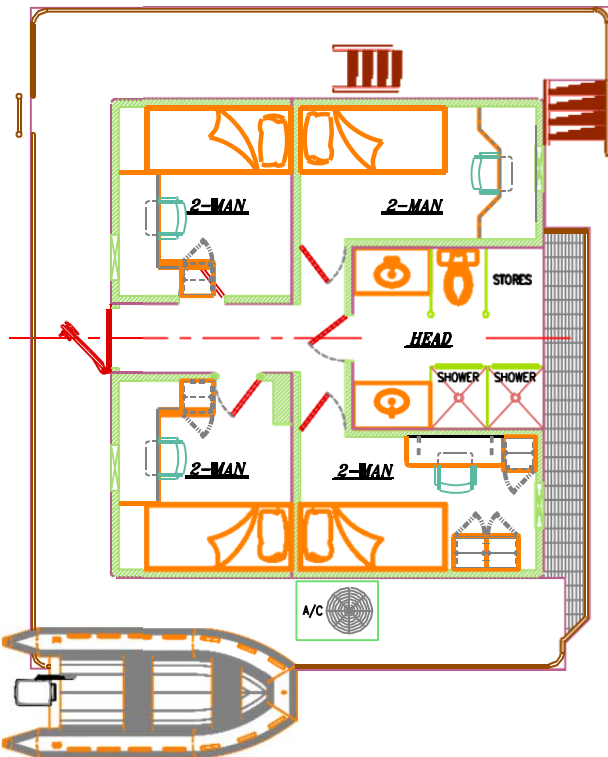
## Main Deck Quarters



## 01 Level Quarters



## 02 Level Quarters



## Pilothouse

