



Overview

LEG

| | |
|-------------------|--------|
| Leg Length | 140 ft |
| Leg Diameter (Od) | 48 in |
| Leg Tower Height | 12 ft |

HULL

| | |
|---------------------|--------|
| Length (Overall) | 103 ft |
| Length (Barge Only) | 84 ft |
| Beam (Overall) | 78 ft |
| Beam (Barge Only) | 48 ft |
| Hull Depth | 8 ft |

PAD

| | |
|--------------|---------------------------|
| Length | 25 ft |
| Width | 18 ft |
| Depth | 3.5 ft |
| Bearing Load | 2,900 lbs/ft ² |
| Design | 2-Way Slope |

CRANE

| | Port | Starboard |
|------------------|--------------|------------|
| Load Rating | 60 ton | 15 ton |
| Make | Bucyrus Erie | EBI |
| Model | MK 60 | TC30-38-70 |
| Boom Type | Lattice | Telescopic |
| Boom Length | 100 ft | 70 ft |
| Crane Inst. Type | Deck Mount | Deck Mount |

PROPULSION

| | |
|-------------------------|------------------|
| Mains - Make | GM |
| Mains - Model | 12V71 |
| Horsepower | 800 hp |
| Bow Thruster Equipped | No |
| Clutch Make/Reduction | Twin Disc 6.17:1 |
| Consumption/Engine-Full | 19.4 gph |
| Consumption/Engine-Half | 9.7 gph |

GENERATORS

| | |
|------------------------|--------|
| Generator Engine Make | GM |
| Generator Engine Model | 8V71 |
| Generator Output | 125 kw |
| Consumption/Gen | 10 gph |

DECK

| | |
|-----------------------|-----------------------|
| Total Deck Area | 4,716 ft ² |
| Clear Deck Area | 2,312 ft ² |
| Additional Clear Area | 1,334 ft ² |
| Maximum Deck Load | 300,000 |

CAPACITIES

| | |
|---------------------|------------|
| Diesel Fuel | 9,222 usg |
| Lube | 304 usg |
| Hydraulic Oil | 1,347 usg |
| Potable Water | 13,700 usg |
| Watermaker Equipped | No |

ELECTRONIC AIDS & COMMUNICATION

| | |
|-----------------------|----------------|
| Compass | Fully Equipped |
| Gps/Dgps | Fully Equipped |
| Radar(s) | Fully Equipped |
| Fathometer | Fully Equipped |
| Loudhailer | Fully Equipped |
| Satellite Phone | Fully Equipped |
| VHF Radio | Fully Equipped |
| Single Sideband Radio | Fully Equipped |
| EPIRB | Fully Equipped |
| GMDSS | No |

PERSONNEL ACCOMMODATIONS

| | |
|------------------------|-------------------|
| Total Accommodations | 28 |
| VIP Accommodations | 3 |
| Galley & Dining | Fully Equipped |
| TV Lounge | Fully Equipped |
| Laundry Facility | Fully Equipped |
| Air Condition / Heater | Std Central Units |

PERFORMANCE

| | |
|-------------------------|---------|
| Estimated Speed | 4 knots |
| Max Sep – Pad to Deck | 133 ft |
| Max Working Water Depth | 108 ft |
| Min Working Water Depth | 8 ft |

DOCUMENTATION

| | |
|------------------------|-----------------------|
| Class | None |
| Flag/ Port of Registry | USA / New Orleans, LA |
| USCG | Inspected |
| SOLAS | No |
| Official Number | 629347 |
| IMO | 8763763 |
| Call Sign | WDH4787 |
| Year Built | 1980 |
| Builder | Texas Shipbuilding |
| Registered Tonnage | 90 |
| International Tonnage | 498 |



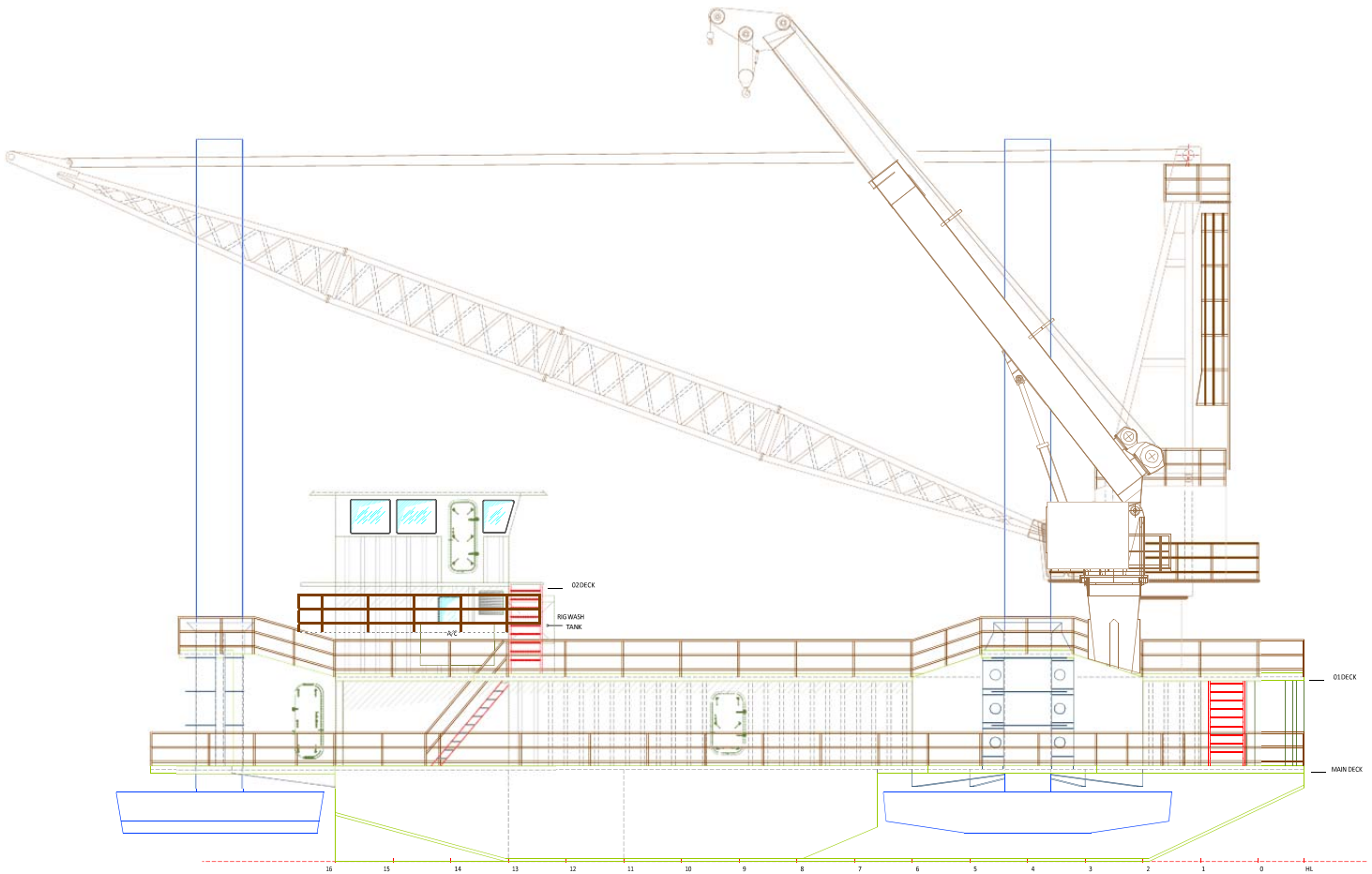
| BUCYRUS ERIE 60 TON CRANE | | |
|---|----------------------------|-----------------------------|
| MK 60 | | |
| 100 FT LATTICE BOOM | | |
| MAXIMUM SAFE WORKING LOAD | | |
| BOOM RADIUS (ft) | ONBOARD LOAD (lbs.) | OFFBOARD LOAD (lbs.) |
| 20 | 105,000 | 70,000 |
| 25 | 98,000 | 65,000 |
| 30 | 92,000 | 61,000 |
| 35 | 86,000 | 57,000 |
| 40 | 78,000 | 52,000 |
| 45 | 70,000 | 46,500 |
| 50 | 62,000 | 41,000 |
| 55 | 56,000 | 37,000 |
| 60 | 50,000 | 33,000 |
| 65 | 45,000 | 30,000 |
| 70 | 41,000 | 27,000 |
| 75 | 36,000 | 24,000 |
| 80 | 31,000 | 20,500 |
| 85 | 28,000 | 18,500 |
| 90 | 24,000 | 16,000 |
| 95 | 21,000 | 14,000 |
| 100 | 17,000 | 11,000 |
| 105 | 14,000 | 9,000 |
| FAST LINE RATED FOR 9,000 LBS AT ALL RADII | | |



| EBI 15 TON CRANE | | |
|--|----------------------------|-----------------------------|
| TC 30-38-70 | | |
| 70 FT TELESCOPIC BOOM | | |
| MAXIMUM SAFE WORKING LOAD | | |
| 38 FT BOOM RETRACTED | | |
| BOOM RADIUS (ft) | ONBOARD LOAD (lbs.) | OFFBOARD LOAD (lbs.) |
| 10 | 30,000 | 20,000 |
| 15 | 21,000 | 14,000 |
| 20 | 15,500 | 10,333 |
| 25 | 12,300 | 8,200 |
| 30 | 9,800 | 6,533 |
| 35 | 7,200 | 4,800 |
| 38 | 3,900 | 2,600 |
| FAST LINE RATED FOR 4,600 LBS UP TO 35 FT | | |
| 70 FT BOOM EXTENDED | | |
| BOOM RADIUS (ft) | ONBOARD LOAD (lbs.) | OFFBOARD LOAD (lbs.) |
| 10 | 30,000 | 20,000 |
| 15 | 20,000 | 13,333 |
| 20 | 15,000 | 10,000 |
| 25 | 11,000 | 7,333 |
| 30 | 9,500 | 6,333 |
| 35 | 7,808 | 5,206 |
| 40 | 6,700 | 4,467 |
| 45 | 5,800 | 3,867 |
| 50 | 4,900 | 3,267 |
| 55 | 4,200 | 2,800 |
| 60 | 3,400 | 2,267 |
| 65 | 2,700 | 1,800 |
| 70 | 1,100 | 733 |
| FAST LINE RATED FOR 3,267 LBS UP TO 50 FT | | |



Outboard Profile



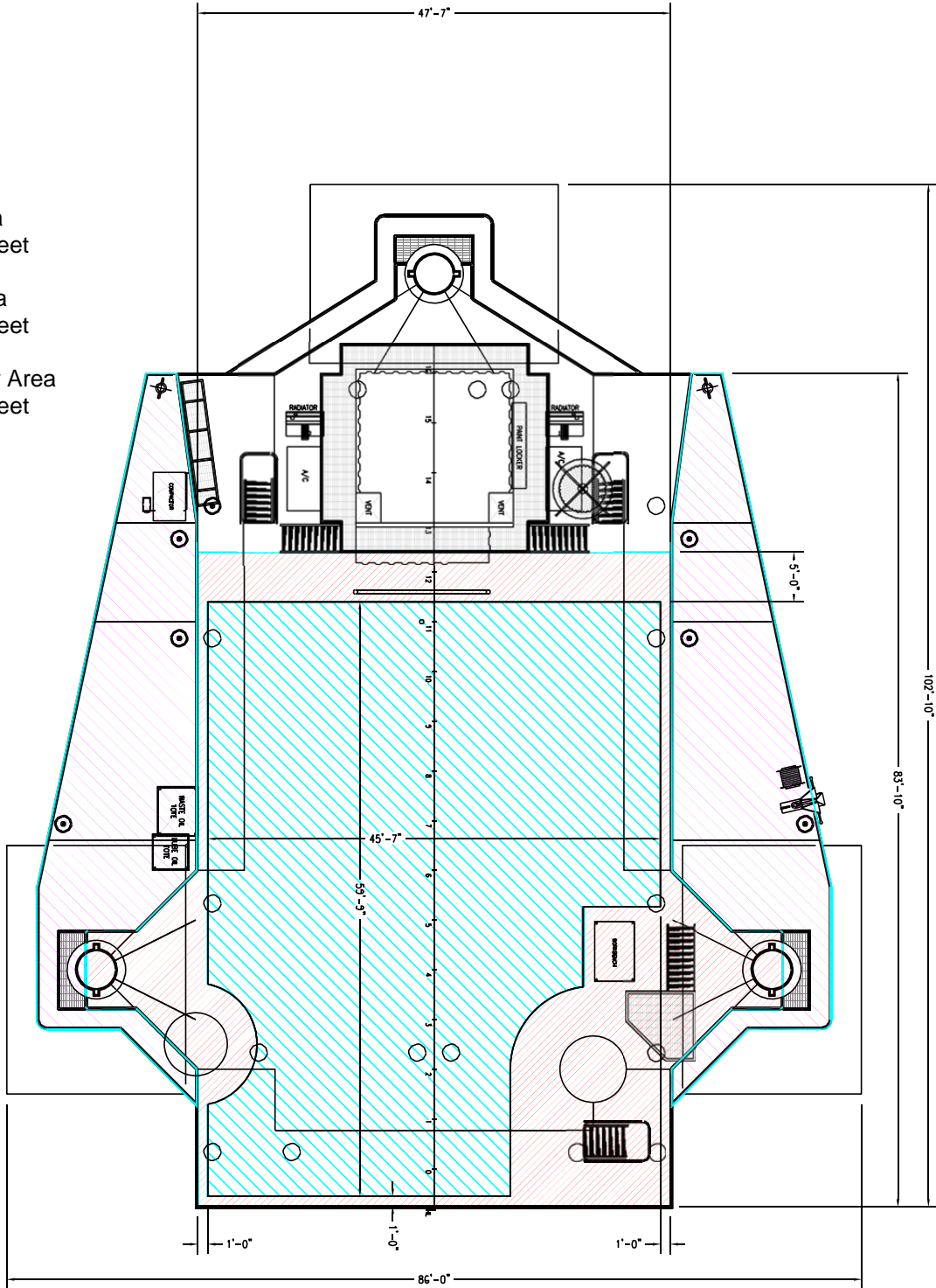


OPEN DECK AREA

Total Deck Area
4,716 Square Feet

Clear Deck Area
2,312 Square Feet

Additional Clear Area
1,334 Square Feet





Main Deck Quarters

