



## Overview

### LEG

Leg Length	140 ft
Leg Diameter (Od)	48 in
Leg Tower Height	12 ft

### HULL

Length (Overall)	104 ft
Length (Barge Only)	85 ft
Beam (Overall)	86 ft
Beam (Barge Only)	48 ft
Hull Depth	8 ft

### PAD

Length	26 ft
Width	18 ft
Depth	4 ft
Bearing Load	2,900 lbs/ft <sup>2</sup>
Design	2-Way Slope

### CRANE

	Port	Starboard
Load Rating	60 ton	25 ton
Make	Bucyrus Erie	Nautilus
Model	MK60	25-3-70
Boom Type	Lattice	Telescopic
Boom Length	100 ft	70 ft
Crane Inst. Type	Deck Mount	Deck Mount

### PROPULSION

Mains - Make	GM
Mains - Model	12V71
Horsepower	800 hp
Bow Thruster Equipped	No
Clutch Make/Reduction	Twin Disc 6.17:1
Consumption/Engine-Full	19.4 gph
Consumption/Engine-Half	9.7 gph

### GENERATORS

Generator Engine Make	GM
Generator Engine Model	8V71
Generator Output	125 kw
Consumption/Gen	10 gph

### DECK

Total Deck Area	4,715 ft <sup>2</sup>
Clear Deck Area	2,350 ft <sup>2</sup>
Additional Clear Area	1,334 ft <sup>2</sup>
Maximum Deck Load	300,000

### CAPACITIES

Diesel Fuel	9,222 usg
Lube	304 usg
Hydraulic Oil	1,347 usg
Potable Water	16,000 usg
Watermaker Equipped	No

### ELECTRONIC AIDS & COMMUNICATION

Compass	Fully Equipped
Gps/Dgps	Fully Equipped
Radar(s)	Fully Equipped
Fathometer	Fully Equipped
Loudhailer	Fully Equipped
Satellite Phone	Fully Equipped
VHF Radio	Fully Equipped
Single Sideband Radio	Fully Equipped
EPIRB	Fully Equipped
GMDSS	No

### PERSONNEL ACCOMMODATIONS

Total Accommodations	30
VIP Accommodations	1
Galley & Dining	Fully Equipped
TV Lounge	Fully Equipped
Laundry Facility	Fully Equipped
Air Condition / Heater	Std Central Units

### PERFORMANCE

Estimated Speed	4 knots
Max Sep – Pad to Deck	130 ft
Max Working Water Depth	90 ft
Min Working Water Depth	8 ft

### DOCUMENTATION

Class	None
Flag/ Port of Registry	USA / New Orleans, LA
USCG	Inspected
SOLAS	No
Official Number	635277
IMO	8765709
Call Sign	WDH4783
Year Built	1981
Builder	Texas Shipbuilding
Registered Tonnage	95
International Tonnage	None



<b>BUCYRUS 60 TON CRANE</b>		
<b>MK60</b>		
<b>100 FT LATTICE BOOM</b>		
<b>MAXIMUM SAFE WORKING LOAD</b>		
<b>BOOM RADIUS (ft)</b>	<b>ONBOARD LOAD (lbs.)</b>	<b>OFFBOARD LOAD (lbs.)</b>
20	105,000	70,000
25	98,000	65,000
30	92,000	61,000
35	86,000	57,000
40	78,000	52,000
45	70,000	46,500
50	62,000	41,000
55	56,000	37,000
60	50,000	33,000
65	45,000	30,000
70	41,000	27,000
75	36,000	24,000
80	31,000	20,500
85	28,000	18,500
90	24,000	16,000
95	21,000	14,000
100	17,000	11,000
105	14,000	9,000

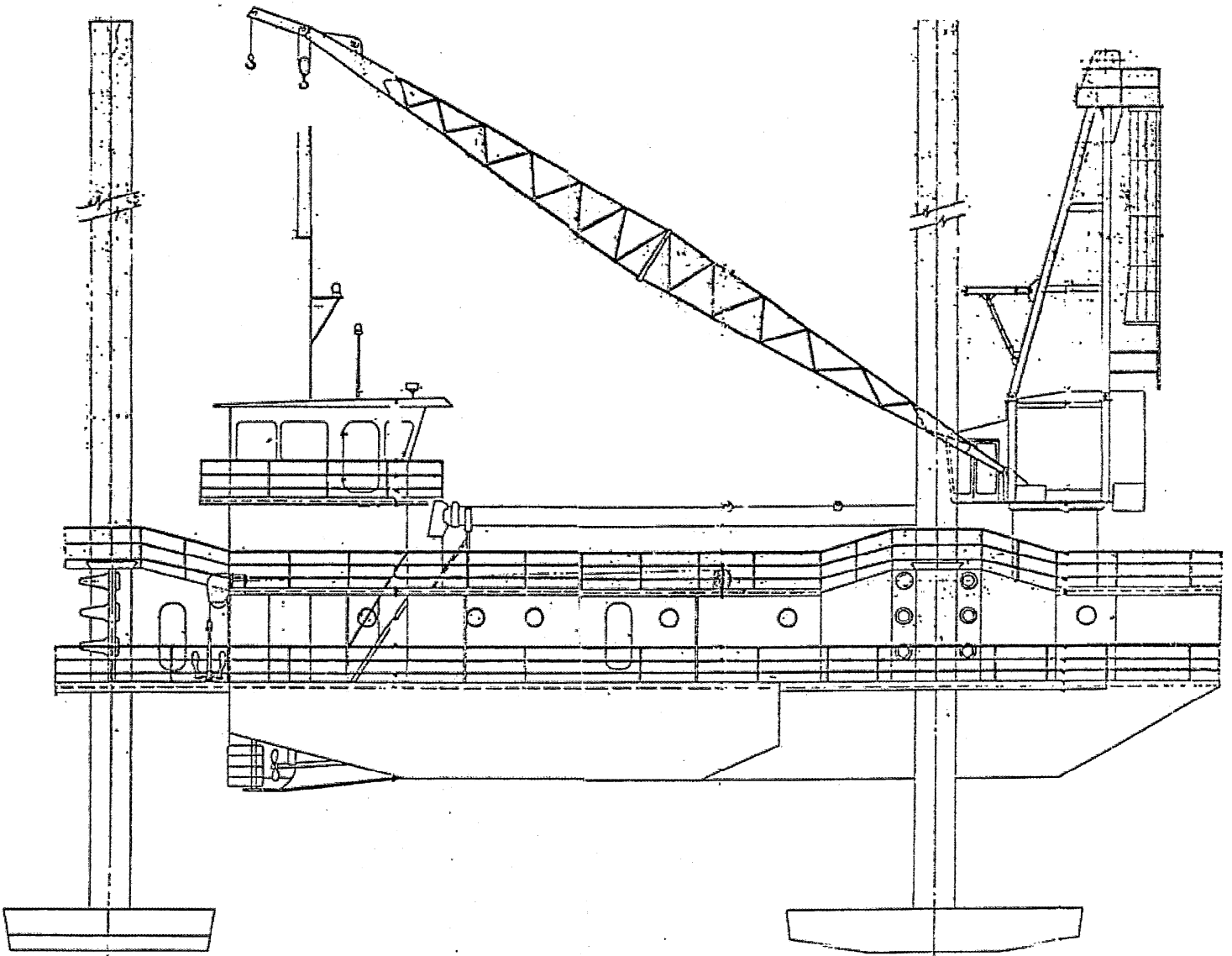
**FAST LINE RATED FOR 9,000 LBS AT ALL RADII**



<b>NAUTILUS 25 TON CRANE*</b>		
<b>25-3-70</b>		
<b>70 FT TELESCOPIC BOOM</b>		
<b>MAXIMUM SAFE WORKING LOAD</b>		
<b>50 FT BOOM RETRACTED</b>		
<b>BOOM RADIUS (ft)</b>	<b>ONBOARD LOAD (lbs.)</b>	<b>OFFBOARD LOAD (lbs.)</b>
10	26,880	26,880
20	25,200	16,800
30	17,900	11,933
40	13,300	8,866
50	10,050	6,720
<b>70 FT BOOM EXTENDED</b>		
<b>BOOM RADIUS (ft)</b>	<b>ONBOARD LOAD (lbs.)</b>	<b>OFFBOARD LOAD (lbs.)</b>
10	26,880	26,880
20	25,400	16,933
30	17,000	11,333
40	12,900	8,600
50	10,500	7,000
60	8,500	5,666
66	7,000	4,666
<b>*CURRENT CONFIGURATION IS FOR 15 TONS</b>		



## Outboard Profile



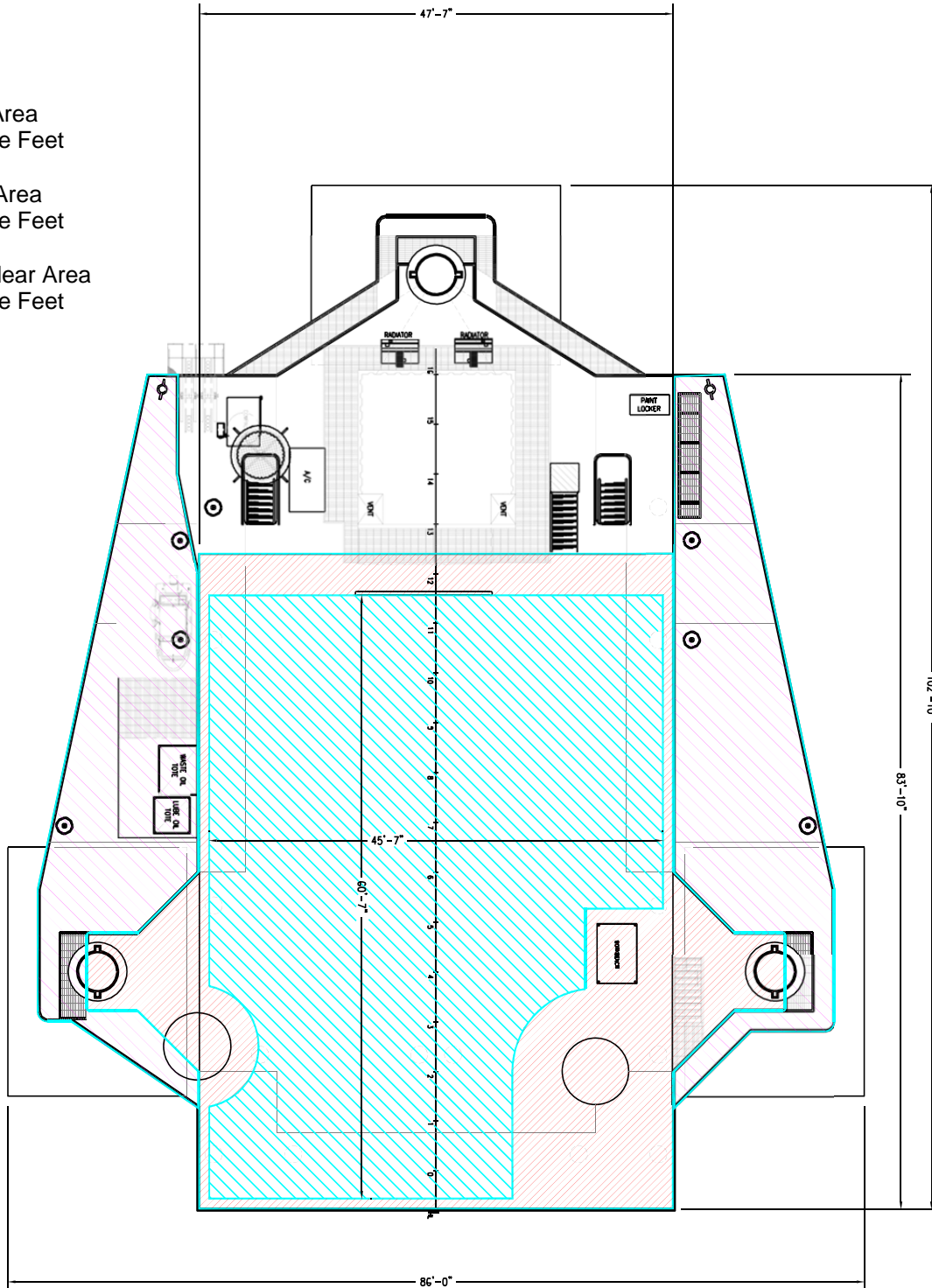


**Open Deck Area**

Total Deck Area  
4,715 Square Feet

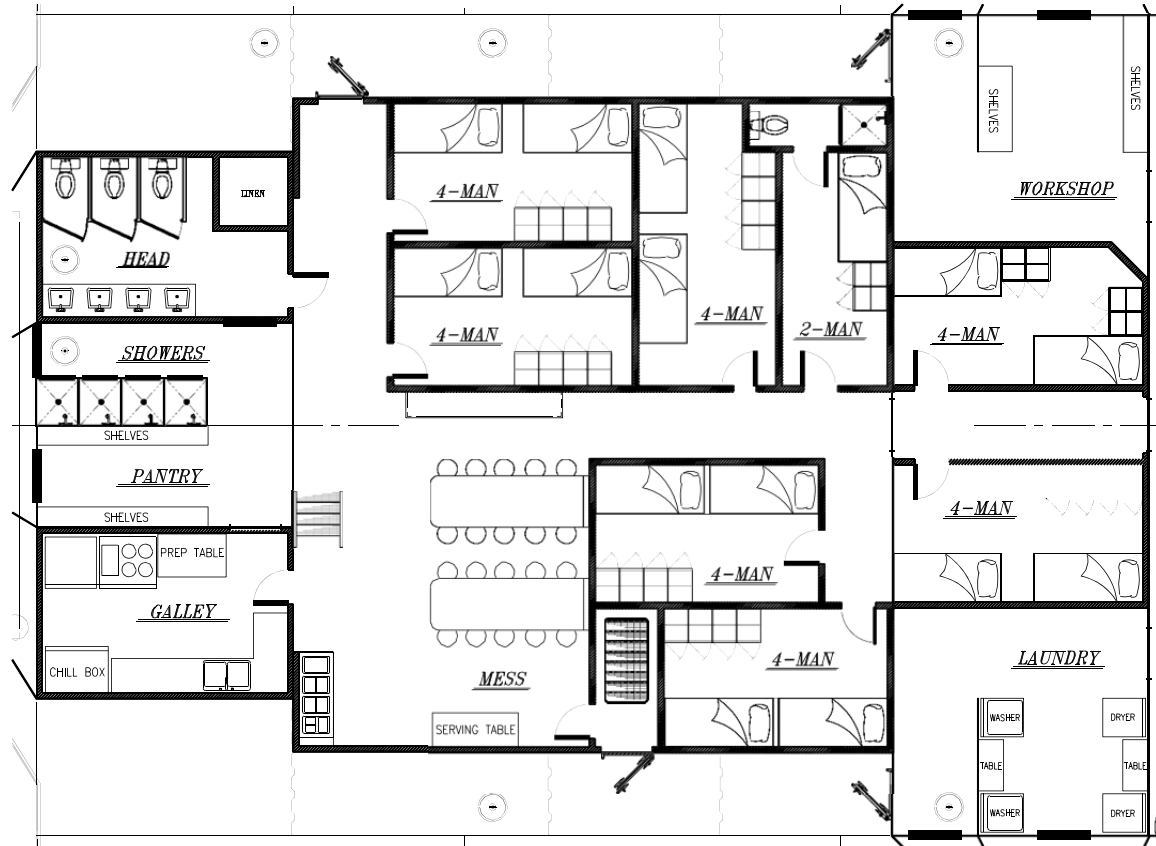
Clear Deck Area  
2,350 Square Feet

Additional Clear Area  
1,334 Square Feet

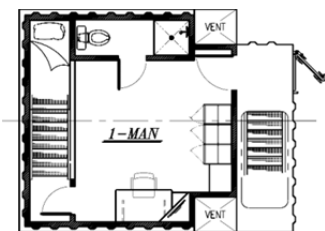




**Main Deck Quarters**



**01 Level Quarters**



**Pilothouse Level**

