



Overview

LEG

| | |
|-------------------|--------|
| Leg Length | 190 ft |
| Leg Diameter (Od) | 60 in |
| Leg Tower Height | 11 ft |

HULL

| | |
|---------------------|-----------|
| Length (Overall) | 113 ft |
| Length (Barge Only) | 110.25 ft |
| Beam (Overall) | 70 ft |
| Beam (Barge Only) | 64.5 ft |
| Hull Depth | 10 ft |

PAD

| | |
|--------------|-------------|
| Length | 26 ft |
| Width | 14 ft |
| Depth | 2 ft |
| Bearing Load | N/A |
| Design | 4-Way Slope |

CRANE

| | Port | Starboard |
|------------------|------------|------------|
| Load Rating | 100 ton | 25 ton |
| Make | RAM | RAM |
| Model | 100-100 | 25-45/70 |
| Boom Type | Lattice | Telescopic |
| Boom Length | 100 ft | 70 ft |
| Crane Inst. Type | Deck Mount | Deck Mount |

PROPULSION

| | |
|-------------------------|------------------|
| Mains - Make | CAT |
| Mains - Model | 3412 |
| Horsepower | 1080 hp |
| Bow Thruster Equipped | No |
| Clutch Make/Reduction | Twin Disc 4.59:1 |
| Consumption/Engine-Full | 37.4 gph |
| Consumption/Engine-Half | 21.7 gph |

GENERATORS

| | |
|------------------------|---------|
| Generator Engine Make | CAT |
| Generator Engine Model | 3306 |
| Generator Output | 75 kw |
| Consumption/Gen | 9.5 gph |

DECK

| | |
|-----------------------|-----------------------|
| Total Deck Area | 4,345 ft ² |
| Clear Deck Area | 2,828 ft ² |
| Additional Clear Area | N/A |
| Maximum Deck Load | 700,000 |

CAPACITIES

| | |
|---------------------|------------|
| Diesel Fuel | 9,726 usg |
| Lube | 300 usg |
| Hydraulic Oil | 3,508 usg |
| Potable Water | 15,196 usg |
| Watermaker Equipped | No |

ELECTRONIC AIDS & COMMUNICATION

| | |
|-----------------------|----------------|
| Compass | Fully Equipped |
| Gps/Dgps | Fully Equipped |
| Radar(s) | Fully Equipped |
| Fathometer | Fully Equipped |
| Loudhailer | Fully Equipped |
| Satellite Phone | Fully Equipped |
| VHF Radio | Fully Equipped |
| Single Sideband Radio | Fully Equipped |
| EPIRB | Fully Equipped |
| GMDSS | No |

PERSONNEL ACCOMMODATIONS

| | |
|------------------------|-------------------|
| Total Accommodations | 29 |
| VIP Accommodations | 1 |
| Galley & Dining | Fully Equipped |
| TV Lounge | Fully Equipped |
| Laundry Facility | Fully Equipped |
| Air Condition / Heater | Std Central Units |

PERFORMANCE

| | |
|-------------------------|---------|
| Estimated Speed | 5 knots |
| Max Sep – Pad to Deck | 179 ft |
| Max Working Water Depth | 153 ft |
| Min Working Water Depth | 8.5 ft |

DOCUMENTATION

| | |
|------------------------|-----------------------|
| Class | None |
| Flag/ Port of Registry | USA / New Orleans, LA |
| USCG | Inspected |
| SOLAS | No |
| Official Number | 1091526 |
| IMO | 8764755 |
| Call Sign | WDH5099 |
| Year Built | 2000 |
| Builder | Conrad Industries |
| Zero Discharge | Yes |
| Registered Tonnage | 189 |
| International Tonnage | 637 |



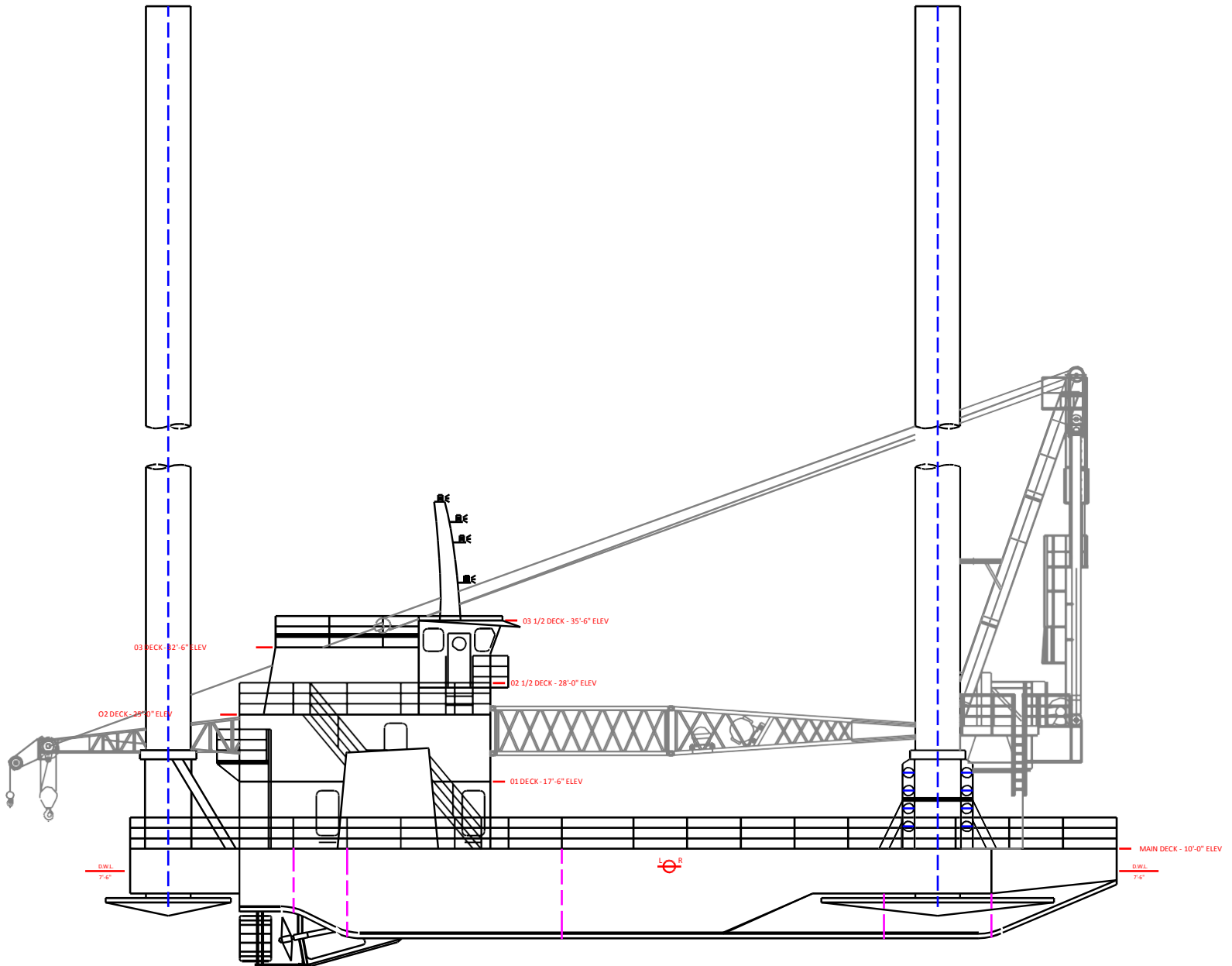
| RAM 100 TON CRANE | | |
|--|--------------------------------|---------------------------------|
| 100-100 100 FT LATTICE BOOM MAXIMUM SAFE WORKING LOAD | | |
| BOOM RADIUS (ft) | ONBOARD LOAD (lbs.) | OFFBOARD LOAD (lbs.) |
| 23 | 200,000 | 133,333 |
| 25 | 200,000 | 133,333 |
| 30 | 200,000 | 133,333 |
| 35 | 171,224 | 114,149 |
| 40 | 148,965 | 99,310 |
| 45 | 131,238 | 87,492 |
| 50 | 117,458 | 78,305 |
| 55 | 105,830 | 70,553 |
| 60 | 96,305 | 64,203 |
| 65 | 88,216 | 58,811 |
| 70 | 81,291 | 54,194 |
| 75 | 75,316 | 50,211 |
| 80 | 70,081 | 46,721 |
| 85 | 65,526 | 43,684 |
| 90 | 61,332 | 40,888 |
| 95 | 57,653 | 38,435 |
| 100 | 53,040 | 35,360 |
| 105 | 40,708 | 27,139 |
| 106 | 40,000 | 26,667 |
| FAST LINE RATED FOR 12,000 LBS AT ALL RADII | | |



| RAM 25 TON CRANE | | |
|---|----------------------------|-----------------------------|
| 25-45/70 | | |
| 70 FT TELESCOPIC BOOM | | |
| MAXIMUM SAFE WORKING LOAD | | |
| 45 FT BOOM RETRACTED | | |
| BOOM RADIUS (ft) | ONBOARD LOAD (lbs.) | OFFBOARD LOAD (lbs.) |
| 8 | 50,700 | 33,800 |
| 10 | 50,700 | 33,800 |
| 15 | 47,000 | 31,300 |
| 20 | 40,200 | 26,800 |
| 25 | 32,500 | 21,700 |
| 30 | 29,700 | 19,800 |
| 35 | 24,200 | 16,200 |
| 40 | 22,000 | 14,700 |
| 45 | 16,000 | 10,700 |
| FAST LINE RATED FOR 5,570 LBS AT ALL RADII | | |
| 70 FT BOOM EXTENDED | | |
| BOOM RADIUS (ft) | ONBOARD LOAD (lbs.) | OFFBOARD LOAD (lbs.) |
| 10 | 47,600 | 31,700 |
| 15 | 38,300 | 25,500 |
| 20 | 35,200 | 23,500 |
| 25 | 29,000 | 19,900 |
| 30 | 26,000 | 17,300 |
| 35 | 23,100 | 15,400 |
| 40 | 18,600 | 12,400 |
| 45 | 14,500 | 9,700 |
| 50 | 12,900 | 8,600 |
| 55 | 11,800 | 7,900 |
| 60 | 10,700 | 7,200 |
| 65 | 9,900 | 6,600 |
| 70 | 6,800 | 4,600 |
| FAST LINE RATED FOR 4,600 LBS AT ALL RADII | | |



Outboard Profile

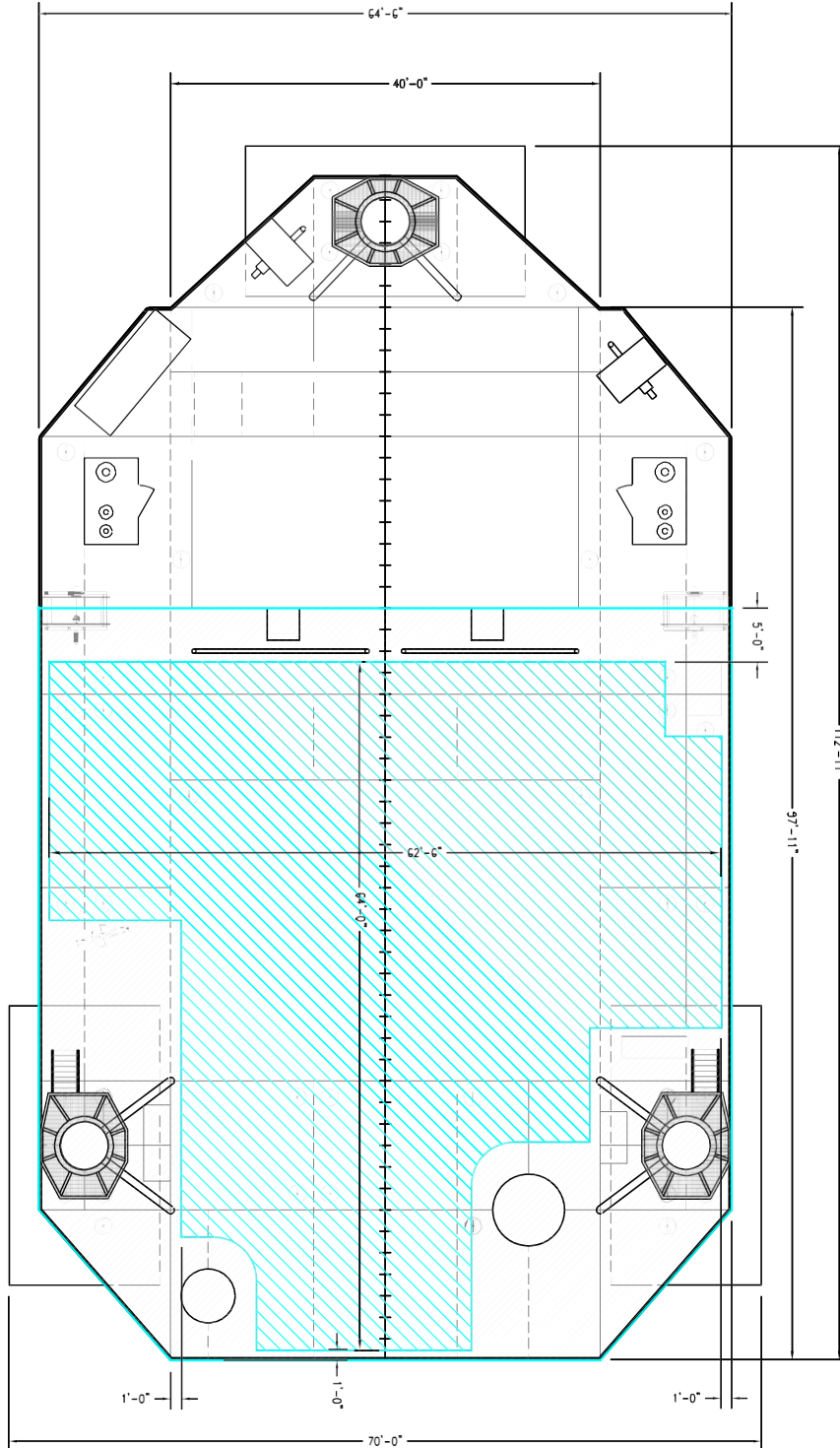




Open Deck Area

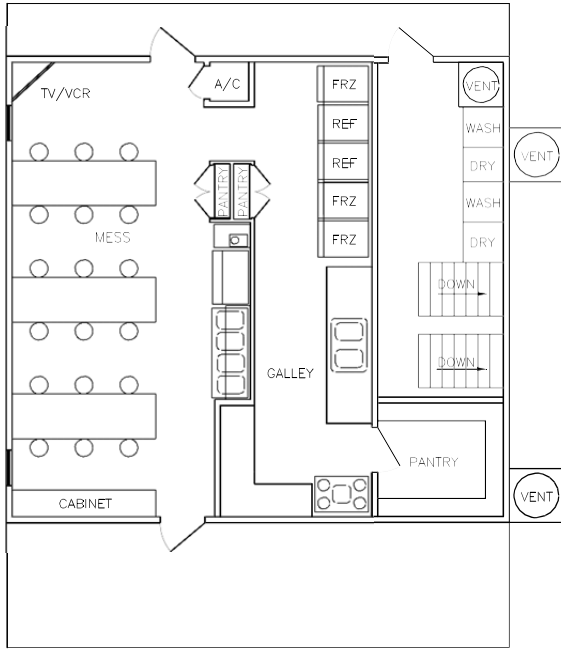
Total Deck Area
4,345 Square Feet

Clear Deck Area
2,828 Square Feet

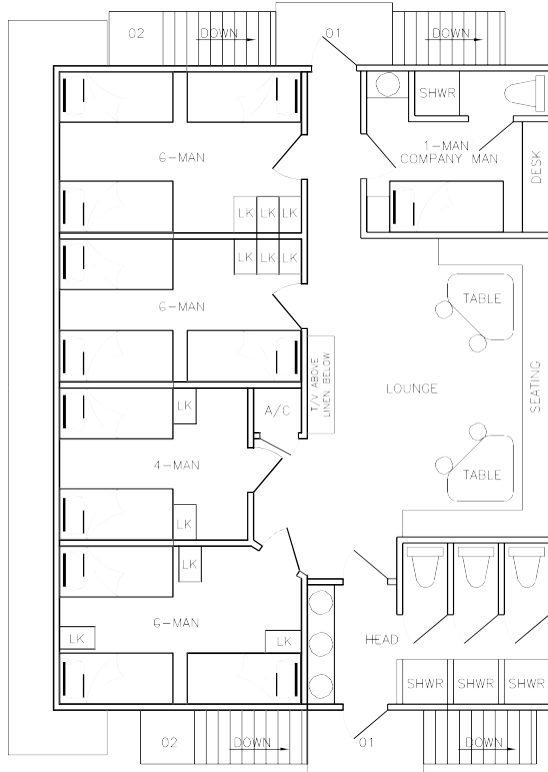




Main Deck Quarters



01 Level Quarters



02 Level Quarters

